

LOC/DME I-VAC <b>110.75</b> Chan 44(Y)	APP CRS <b>006°</b>	Rwy Ldg 8000	TDZE 873
		Apt Elev 896	

# ILS or LOC RWY 36L

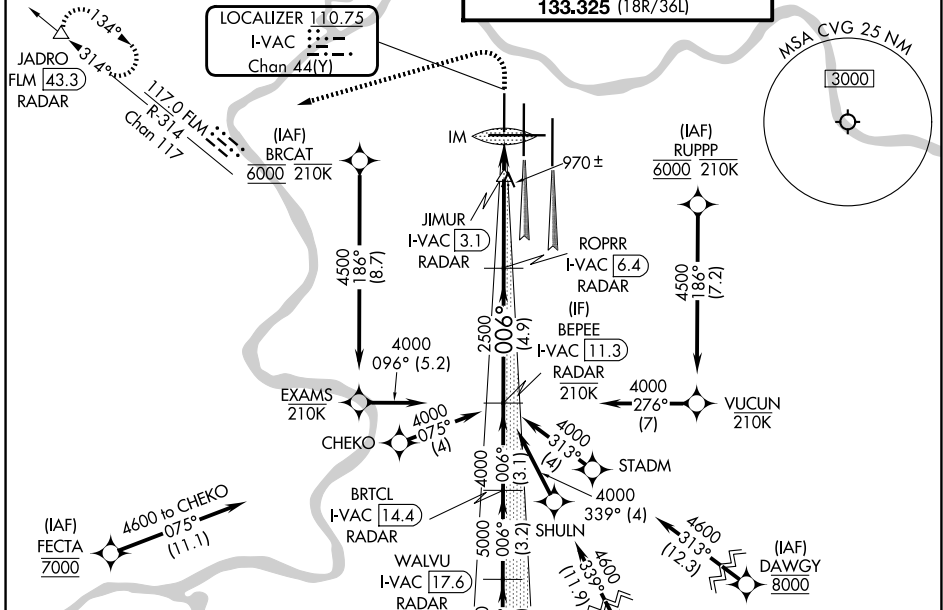
CINCINNATI/NORTHERN KENTUCKY INTL (CVG)

RNP APCH - GPS. From FECTA or SPOOD or DAWGY or RUPPP or BRCCAT.  
DME or RADAR required. RADAR required for procedure entry at TMORE.

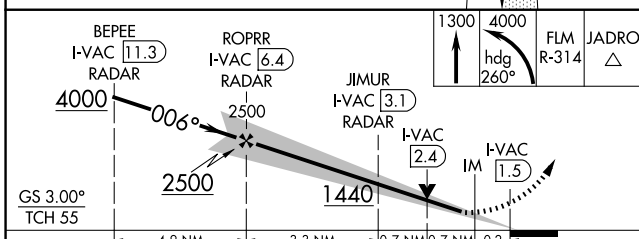
ALSF-2  
MISSED APPROACH: Climb to 1300 then climbing left turn to 4000 on heading 260° and on FLM VOR/DME R-314 to JADRO/FLM 43.3 DME/RADAR and hold.

Simultaneous approach authorized. For inop ALS, increase S-LOC 36L Cats C and D visibility to RVR 5500.

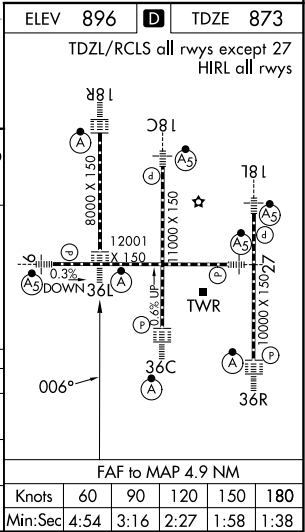
D-ATIS <b>134.375</b>	CINCINNATI APP CON <b>119.7 363.15</b> (090°-269°) <b>123.875 363.15</b> (270°-089°)	CINCINNATI TOWER <b>118.975 360.85</b> (18L/36R) <b>118.3</b> (9/27, 18C/36C) <b>133.325</b> (18R/36L)	GND CON <b>121.7</b>
--------------------------	--	---	-------------------------



ELEV 896	TDZE 873
TDZL/RCLS all rwys except 27 HIRL all rwys	



CATEGORY	A	B	C	D
S-ILS 36L	1073/18 200 (200-½)			
S-LOC 36L	1220/24	347 (400-½)	1220/30	347 (400-¾)
CIRCLING	1460-1	564 (600-1)	1560-1¾ 664 (700-1¾)	1560-2 664 (700-2)



# ILS or LOC RWY 36L

SE-1, 14 MAY 2026 to 11 JUN 2026

SE-1, 14 MAY 2026 to 11 JUN 2026

FAF to MAP 4.9 NM					
Knots	60	90	120	150	180
Min:Sec	4:54	3:16	2:27	1:58	1:38