

LOC/DME I-EEI 110.35 Chan 40 (Y)	APP CRS 006°	Rwy Ldg 10000
		TDZE 896
		Apt Elev 896

ILS or LOC RWY 36R

CINCINNATI/NORTHERN KENTUCKY INTL (CVG)

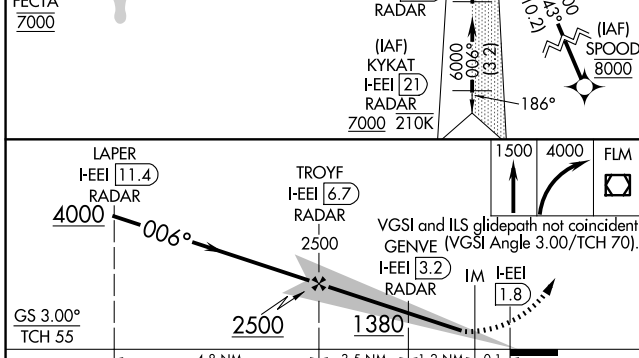
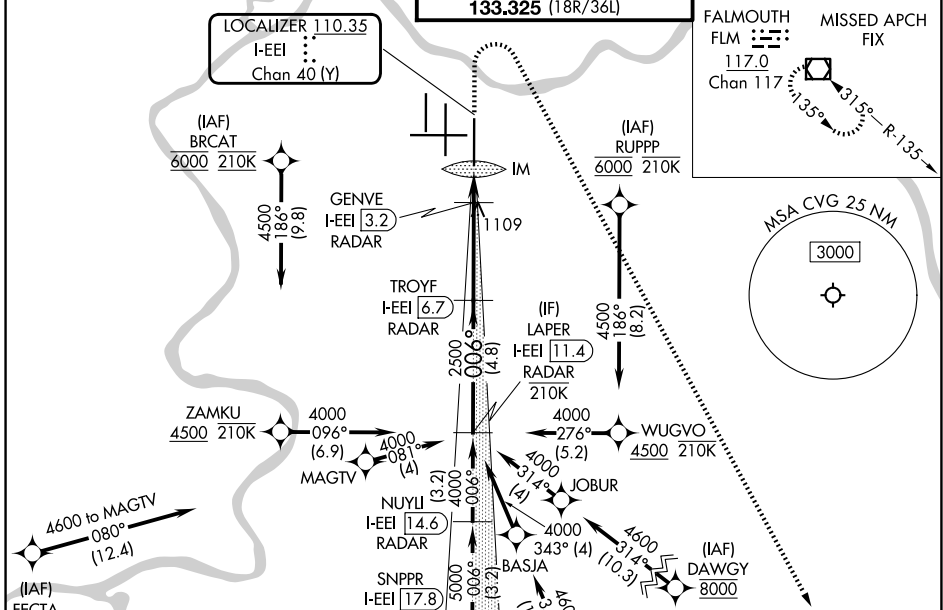
RNP APCH - GPS. From BRCAT or RUPPP or FECTA or SPOOD or DAWGY.
DME or RADAR required. RADAR required for procedure entry at KYKAT.

Simultaneous approach authorized.
For inop ALS, increase S-LOC 36R Cat C and D visibility to 1 3/8 SM.

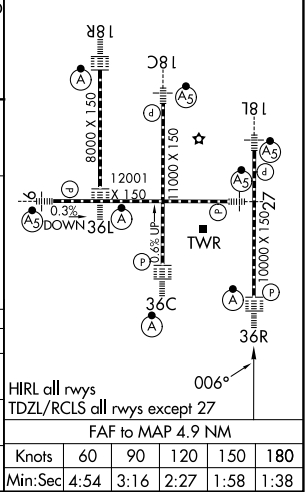
ALSF-2

MISSED APPROACH: Climb to 1500 then climbing right turn to 4000 direct FLM VOR/DME and hold.

D-ATIS 134.375	CINCINNATI APP CON 119.7 363.15 (090°-269°) 123.875 363.15 (270°-089°)	CINCINNATI TOWER 118.975 360.85 (18L/36R) 118.3 (9/27, 18C/36C) 133.325 (18R/36L)	GND CON 121.7
--------------------------	--	---	-------------------------



ELEV 896	D	TDZE 896
----------	----------	----------



CATEGORY	A	B	C	D
S-ILS 36R	1096/18 200 (200-1/2)			
S-LOC 36R	1360/24	464 (500-1/2)	1360/50	464 (500-1)
CIRCLING	1460-1	564 (600-1)	1560-1 3/4 664 (700-1 3/4)	1560-2 664 (700-2)

HIRL all rwys
TDZL/RCLS all rwys except 27
FAF to MAP 4.9 NM

Knots	60	90	120	150	180
Min:Sec	4:54	3:16	2:27	1:58	1:38

SE-1, 14 MAY 2026 to 11 JUN 2026

SE-1, 14 MAY 2026 to 11 JUN 2026