

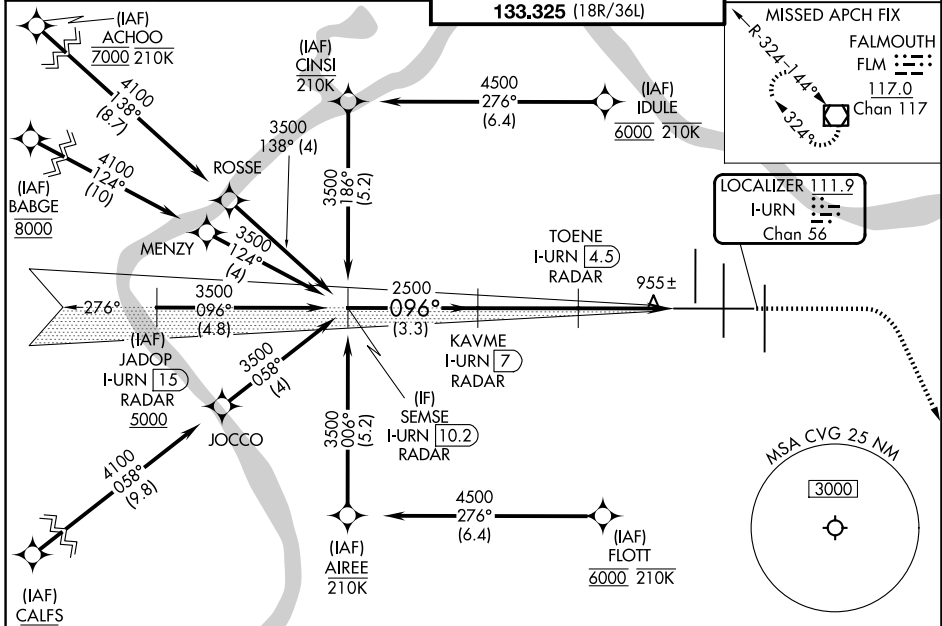
LOC/DME I-URN <b>111.9</b> Chan <b>56</b>	APP CRS <b>096°</b>	Rwy Ldg <b>11640</b> TDZE <b>883</b> Apt Elev <b>896</b>
---	------------------------	--

# ILS or LOC RWY 9

CINCINNATI/NORTHERN KENTUCKY INTL (CVG)

RNP APCH - GPS. From ACHOO, AIREE, BABGE, CALFS, CINSI, FLOTT or IDULE.	MALSR	MISSED APPROACH: Climb to 2000 then climbing right turn to 3000 direct FLM VOR/DME and hold.
DME or RADAR required. RADAR required for procedure entry at JADOP.		

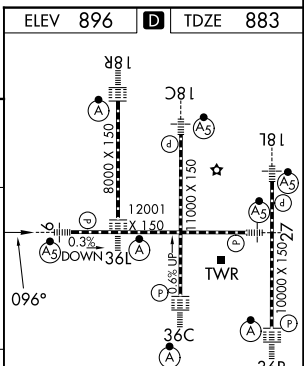
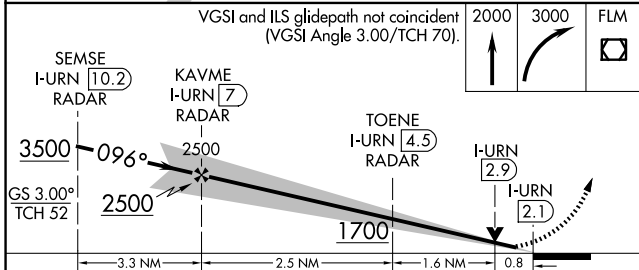
D-ATIS <b>134.375</b>	CINCINNATI APP CON <b>119.7 363.15</b> (090°-269°) <b>123.875 363.15</b> (270°-089°)	CINCINNATI TOWER <b>118.975 360.85</b> (18L/36R) <b>118.3</b> (9/27, 18C/36C) <b>133.325</b> (18R/36L)	GND CON <b>121.7</b>
--------------------------	--	---	-------------------------



SE-1, 14 MAY 2026 to 11 JUN 2026

SE-1, 14 MAY 2026 to 11 JUN 2026

ELEV 896	<b>D</b> TDZE 883
----------	-------------------



CATEGORY	A	B	C	D
S-ILS 9	1083/18 200 (200-½)			
S-LOC 9	1220/24	337 (400-½)	1220/26	337 (400-½)
CIRCLING	1460-1	564 (600-1)	1560-1¾ 664 (700-1¾)	1560-2 664 (700-2)

HIRL all rwys TDZL/RCLS all rwys except 27					
FAF to MAP 4.9 NM					
Knots	60	90	120	150	180
Min:Seq	4:54	3:16	2:27	1:58	1:38