


APP CRS	Rwy Ldg 11000
186°	TDZE 875
	Apt Elev 896

RNAV (RNP) Z RWY 18C

CINCINNATI/NORTHERN KENTUCKY INTL (CVG)

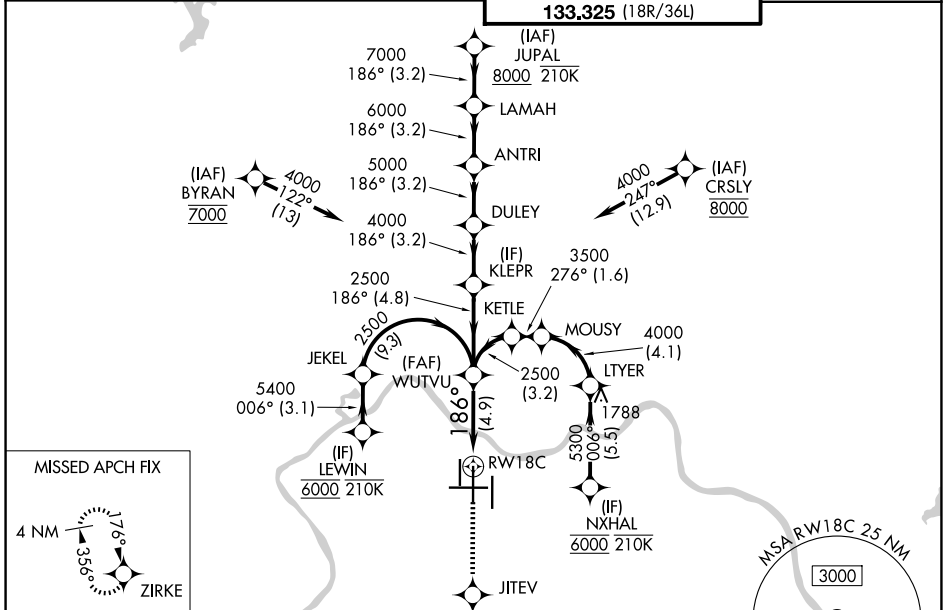
RNP AR APCH - GPS. Authorization required. From JEKEL or LTYER: RF.

▼ For uncompensated Baro-VNAV systems, procedure NA below -13°C or above 54°C. For inop ALS, increase RNP 0.15 all Cats visibility to RVR 4500 and RNP 0.30 all Cats visibility to 1½ SM. Simultaneous approach authorized.

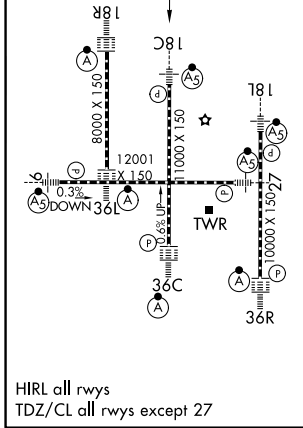
MALSR 

MISSED APPROACH: Climb to 3000 direct JITEV and on track 181° to ZIRKE and hold.



D-ATIS 134.375	CINCINNATI APP CON 119.7 363.15 (090°-269°) 123.875 363.15 (270°-089°)	CINCINNATI TOWER 118.975 360.85 (18L/36R) 118.3 (9/27, 18C/36C) 133.325 (18R/36L)	GND CON 121.7
--------------------------	--	---	-------------------------

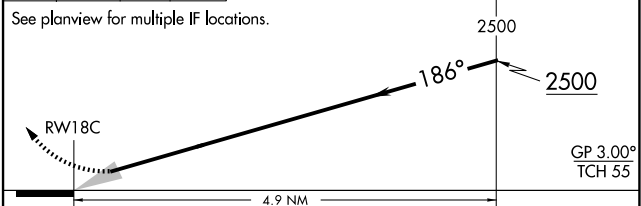


ELEV 896	D	TDZE 875
----------	----------	----------



3000 JITEV ZIRKE VGSI and RNAV glidepath not coincident (VGSI Angle 3.00/TCH 71).

↑  tr 181° 



CATEGORY	A	B	C	D
RNP 0.15 DA		1190/24	315 (300-½)	
RNP 0.30 DA		1389/55	514 (500-1)	

AUTHORIZATION REQUIRED

SE-1, 14 MAY 2026 to 11 JUN 2026

SE-1, 14 MAY 2026 to 11 JUN 2026