

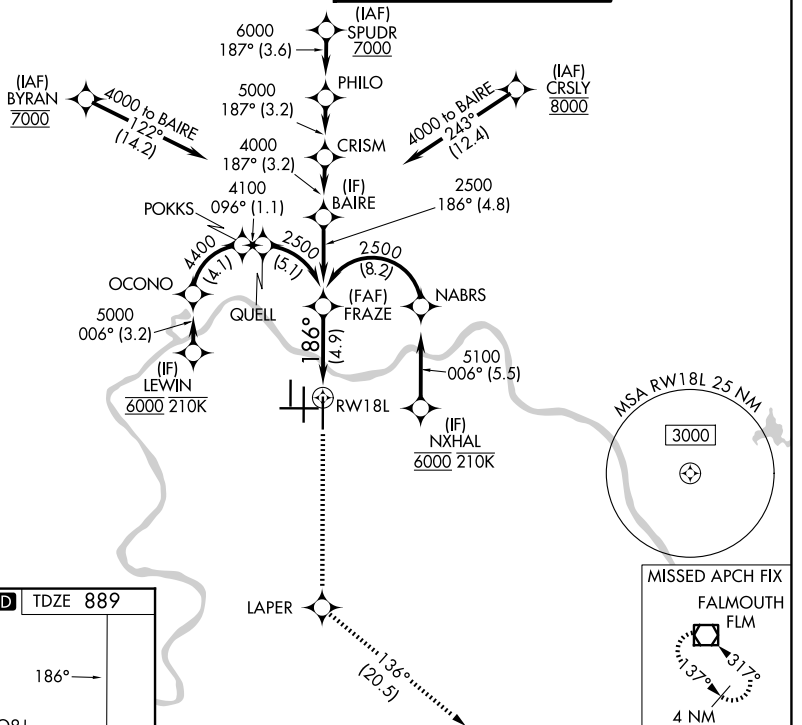
# RNAV (RNP) Z RWY 18L

CINCINNATI/NORTHERN KENTUCKY INTL (CVG)

APP CRS	Rwy Ldg	<b>10000</b>
<b>186°</b>	TDZE	<b>889</b>
	Apt Elev	<b>896</b>

<p>RNP AR APCH - GPS. Authorization required. From NABRS or OCONO: RF.</p> <p>▼ For uncompensated Baro-VNAV systems, procedure NA below -13°C or above 54°C. For inop ALS, increase RNP 0.25 all Cats visibility to 5500 and increase RNP 0.30 all Cats visibility to 1½ SM. Simultaneous approach authorized.</p>		<p>MALSR</p>	<p>MISSED APPROACH: Climb to 3000 direct LAPER and on track 136° to FLM VOR/DME and hold.</p>
--	--	--------------	---

D-ATIS	CINCINNATI APP CON	CINCINNATI TOWER	GND CON
<b>134.375</b>	<b>119.7 363.15</b> (090°-269°) <b>123.875 363.15</b> (270°-089°)	<b>118.975 360.85</b> (18L/36R) <b>118.3</b> (9/27, 18C/36C) <b>133.325</b> (18R/36L)	<b>121.7</b>



SE-1, 14 MAY 2026 to 11 JUN 2026

SE-1, 14 MAY 2026 to 11 JUN 2026

ELEV 896	<b>D</b>	TDZE 889
----------	----------	----------

HIRL all rwy's  
TDZL/RCLS all rwy's except 27

3000	LAPER	tr 136°	FLM	VGSI and RNAV glidepath not coincident (VGSI Angle 3.00/TCH 71).
See planview for multiple IF locations.				
				GP 3.00° TCH 55
CATEGORY	A	B	C	D
RNP 0.25 DA		1240/30	351 (400-½%)	
RNP 0.30 DA		1388/50	499 (500-1)	

AUTHORIZATION REQUIRED