

APP CRS	Rwy Ldg	8000
186°	TDZE	868
	Apt Elev	896

RNAV (RNP) Z RWY 18R

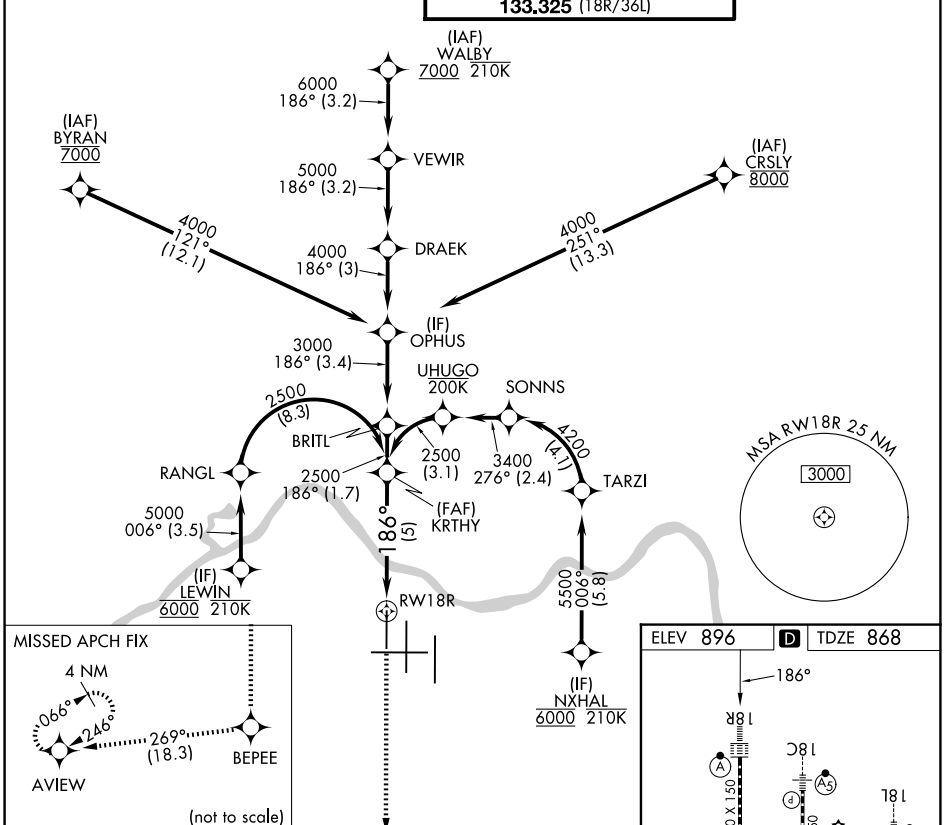
CINCINNATI/NORTHERN KENTUCKY INTL (CVG)

RNP AR APCH - GPS. Authorization required. From RANGL or TARZI: RF

ALSF-2 MISSED APPROACH: Climb to 3000 direct BEPEE and on track 269° to AVIEW and hold.

For uncompensated Baro-VNAV systems, procedure NA below -13°C or above 54°C. Simultaneous approach authorized. For inop ALS, increase RNP 0.30 all Cats visibility to RVR 5500.

D-ATIS 134.375	CINCINNATI APP CON 119.7 363.15 (090°-269°) 123.875 363.15 (270°-089°)	CINCINNATI TOWER 118.975 360.85 (18L/36R) 118.3 (9/27, 18C/36C) 133.325 (18R/36L)	GND CON 121.7
--------------------------	--	---	-------------------------



SE-1, 14 MAY 2026 to 11 JUN 2026

SE-1, 14 MAY 2026 to 11 JUN 2026

MISSED APCH FIX

4 NM, 066°, 246°, 269° (18.3), BEPEE, AVIEW (not to scale)

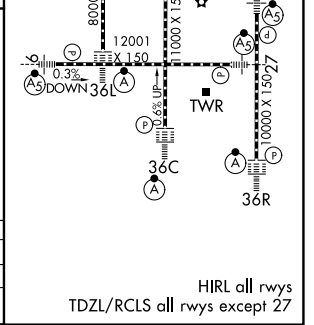
3000 BEPEE tr 269° AVIEW See planview for multiple IF locations.

KRTHY 2500

RWY 18R 186° 2500 GP 3.00° TCH 58

CATEGORY	A	B	C	D
RNP 0.30 DA		1238/35	370 (400-%)	

AUTHORIZATION REQUIRED



HIRL all rwys
TDZL/RCLS all rwys except 27