

APP CRS	Rwy Ldg	8000
006°	TDZE	873
	Apt Elev	896

RNAV (RNP) Z RWY 36L

CINCINNATI/NORTHERN KENTUCKY INTL (CVG)

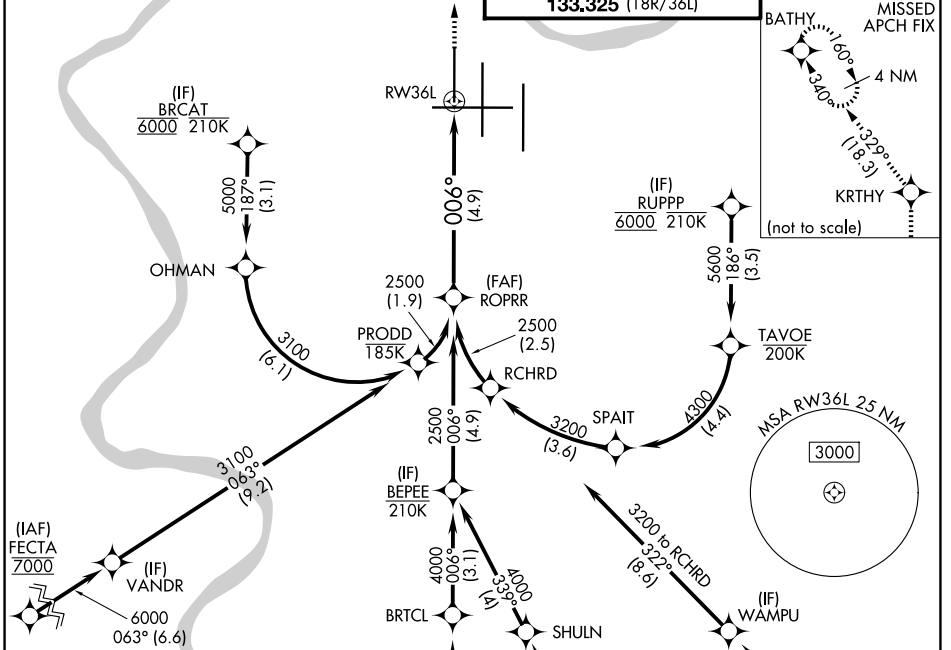
RNP AR APCH - GPS. Authorization required. From OHMAN, PRODD, RCHRD, or TAVOE: RF.

For uncompensated Baro-VNAV systems, procedure NA below -13°C or above 54°C. Simultaneous approach authorized.

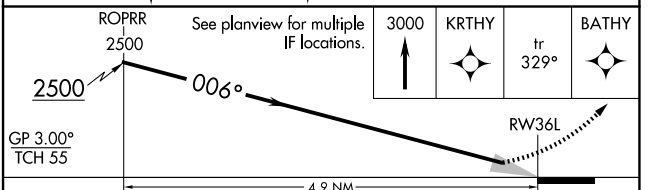
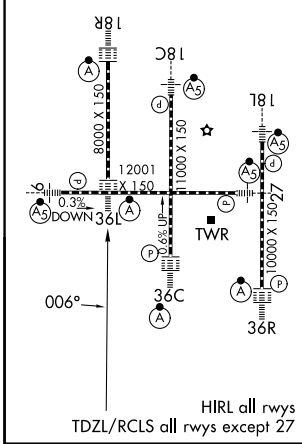
ALSF-2

MISSED APPROACH: Climb to 3000 direct KRTHY and on track 329° to BATHY and hold.

D-ATIS 134.375	CINCINNATI APP CON 119.7 363.15 (090°-269°) 123.875 363.15 (270°-089°)	CINCINNATI TOWER 118.975 360.85 (18L/36R) 118.3 (9/27, 18C/36C) 133.325 (18R/36L)	GND CON 121.7
--------------------------	--	---	-------------------------



ELEV 896	D	TDZE 873
----------	----------	----------



GP 3.00° TCH 55	4.9 NM			
CATEGORY	A	B	C	D
RNP 0.15 DA	1205/26		332 (400-½)	
RNP 0.30 DA	1270/35		397 (400-⅝)	

AUTHORIZATION REQUIRED

SE-1, 14 MAY 2026 to 11 JUN 2026

SE-1, 14 MAY 2026 to 11 JUN 2026