

APP CRS	Rwy Ldg	<b>10000</b>
<b>006°</b>	TDZE	<b>896</b>
	Apt Elev	<b>896</b>

# RNAV (RNP) Z RWY 36R

CINCINNATI/NORTHERN KENTUCKY INTL (CVG)

RNP AR APCH - GPS. Authorization required. From ALALE, BIBWY, LINOL, or YOTUL: RF.

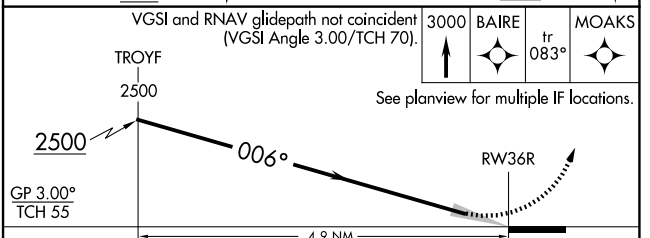
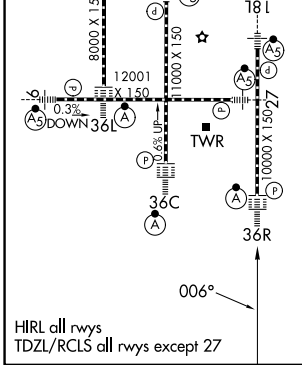
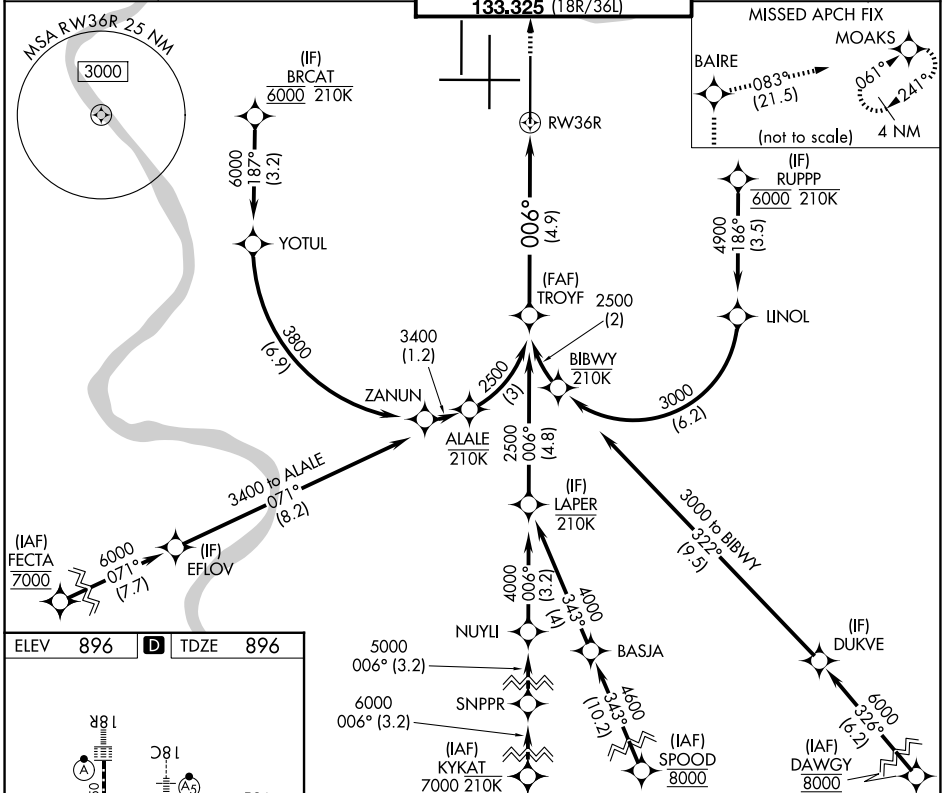
For uncompensated Baro-VNAV systems, procedure NA below -13°C or above 54°C. Simultaneous approach authorized. For inop ALS, increase RNP 0.16 all Cats visibility to RVR 5500 and RNP 0.30 all Cats visibility to RVR 6000.

ALSF-2



MISSED APPROACH: Climb to 3000 direct BAIRE and on track 083° to MOAKS and hold.

D-ATIS <b>134.375</b>	CINCINNATI APP CON <b>119.7 363.15</b> (090°-269°) <b>123.875 363.15</b> (270°-089°)	CINCINNATI TOWER <b>118.975 360.85</b> (18L/36R) <b>118.3</b> (9/27, 18C/36C) <b>133.325</b> (18R/36L)	GND CON <b>121.7</b>
--------------------------	--	---	-------------------------



CATEGORY	A	B	C	D
RNP 0.16 DA		1242/30	346 (400-¾)	
RNP 0.30 DA		1308/40	412 (500-¾)	

# RNAV (RNP) Z RWY 36R

SE-1, 14 MAY 2026 to 11 JUN 2026

SE-1, 14 MAY 2026 to 11 JUN 2026

**AUTHORIZATION REQUIRED**