

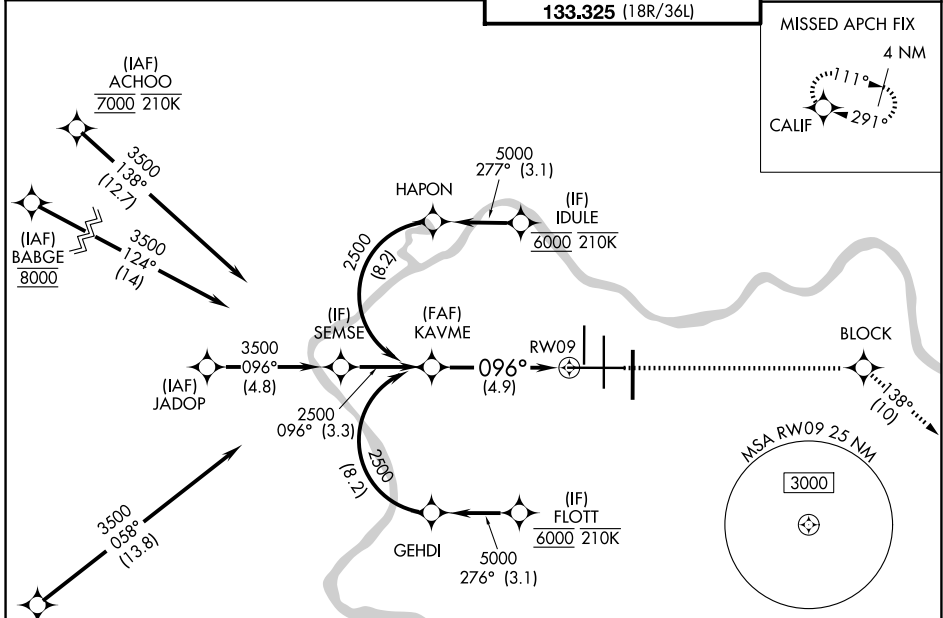
APP CRS	Rwy Ldg	<b>11640</b>
<b>096°</b>	TDZE	<b>883</b>
	Apt Elev	<b>896</b>

# RNAV (RNP) Z RWY 9

CINCINNATI/NORTHERN KENTUCKY INTL (CVG)

RNP AR APCH - GPS. Authorization required. From FLOTT or IDULE: RF.		MALSR	MISSED APPROACH: Climb to 3000 direct BLOCK and on track 138° to CALIF and hold.
For uncompensated Baro-VNAV systems, procedure NA below -13°C or above 54°C.			

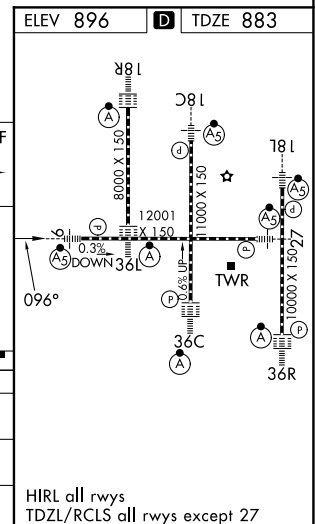
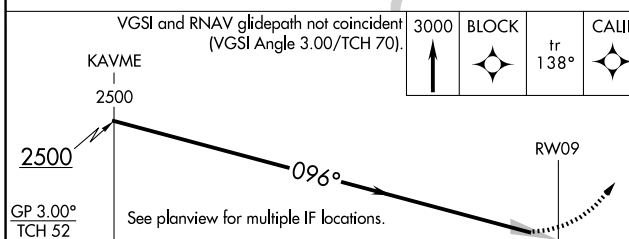
D-ATIS <b>134.375</b>	CINCINNATI APP CON <b>119.7 363.15</b> (090°-269°) <b>123.875 363.15</b> (270°-089°)	CINCINNATI TOWER <b>118.975 360.85</b> (18L/36R) <b>118.3</b> (9/27, 18C/36C) <b>133.325</b> (18R/36L)	GND CON <b>121.7</b>
--------------------------	--	---	-------------------------



SE-1, 14 MAY 2026 to 11 JUN 2026

SE-1, 14 MAY 2026 to 11 JUN 2026

ELEV 896	<b>D</b> TDZE 883
----------	-------------------



CATEGORY	A	B	C	D
RNP 0.18 DA		1205/26	322 (400-½)	
RNP 0.30 DA		1275/35	392 (400-¾)	

**AUTHORIZATION REQUIRED**

HIRL all rwy's  
TDZL/RCLS all rwy's except 27