

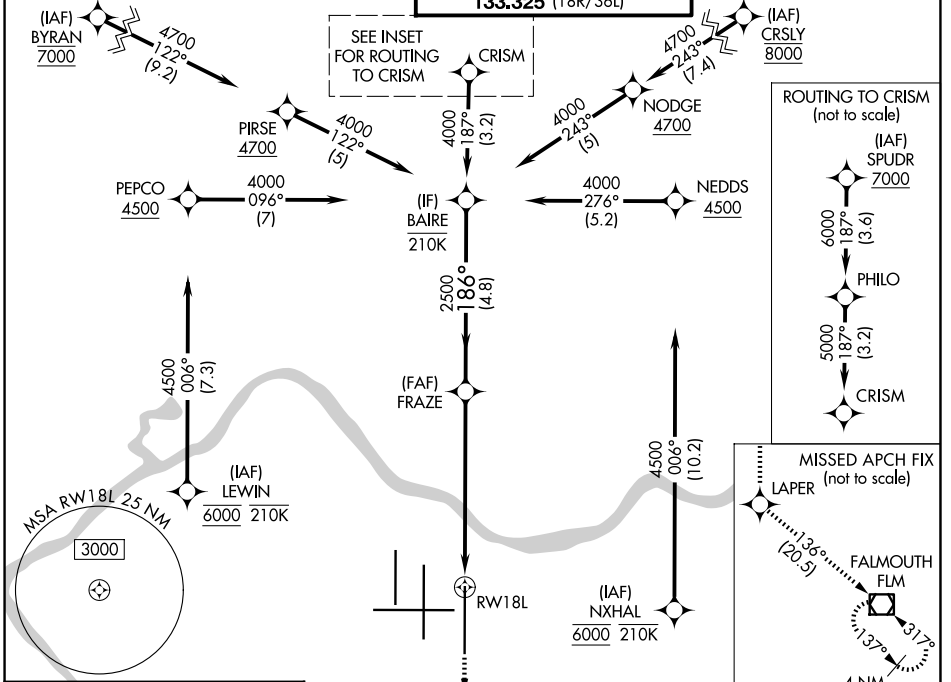
WAAS CH <b>40103</b> <b>W18A</b>	APP CRS <b>186°</b>	Rwy Ldg <b>10000</b> TDZE <b>889</b> Apt Elev <b>896</b>
--	------------------------	--

# RNAV (GPS) Y RWY 18L

CINCINNATI/NORTHERN KENTUCKY INTL (CVG)

RNP APCH - GPS. ▼ For uncompensated Baro-VNAV systems, LNAV/VNAV NA below -13°C or above 54°C. Simultaneous approach authorized. LNAV procedure NA during simultaneous operations. Use of FD or AP required during simultaneous operations. For inop ALS, increase LNAV/VNAV all Cats and LNAV Cat C and D visibility to 1 1/2 SM.	MALS R AS	MISSED APPROACH: Climb to 3000 direct LAPER and on track 136° to FLM VOR/DME and hold.
---	--------------	--

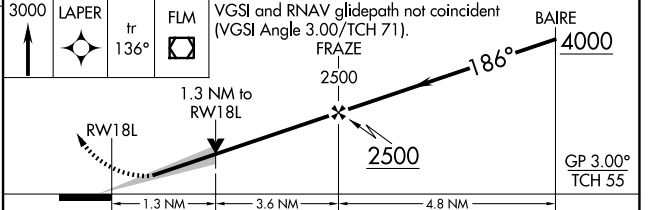
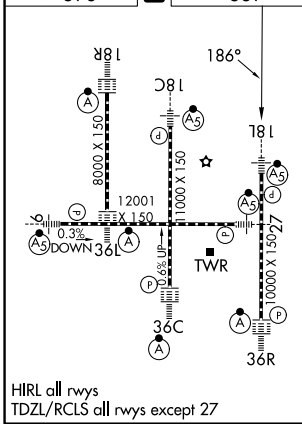
D-ATIS <b>134.375</b>	CINCINNATI APP CON <b>119.7 363.15</b> (090°-269°) <b>123.875 363.15</b> (270°-089°)	CINCINNATI TOWER <b>118.975 360.85</b> (18L/36R) <b>118.3</b> (9/27, 18C/36C) <b>133.325</b> (18R/36L)	GND CON <b>121.7</b>
--------------------------	--	---	-------------------------



SE-1, 14 MAY 2026 to 11 JUN 2026

SE-1, 14 MAY 2026 to 11 JUN 2026

ELEV 896	<b>D</b>	TDZE 889
----------	----------	----------



CATEGORY	A	B	C	D
LPV DA		1089/18	200 (200-1/2)	
LNAV/VNAV DA		1360/50	471 (500-1)	
LNAV MDA	1360/24	471 (500-1/2)	1360/50	471 (500-1)
CIRCLING	1460-1	564 (600-1)	1560-1 3/4 664 (700-1 3/4)	1560-2 664 (700-2)