

|  |                        |                             |   |
|--|------------------------|-----------------------------|---|
| WAAS<br>CH <b>58099</b><br><b>W18D</b> | APP CRS<br><b>186°</b> | Rwy Ldg<br>TDZE<br>Apt Elev | <b>8000</b><br><b>868</b><br><b>896</b> |
|--|------------------------|-----------------------------|---|

# RNAV (GPS) Y RWY 18R

CINCINNATI/NORTHERN KENTUCKY INTL (CVG)

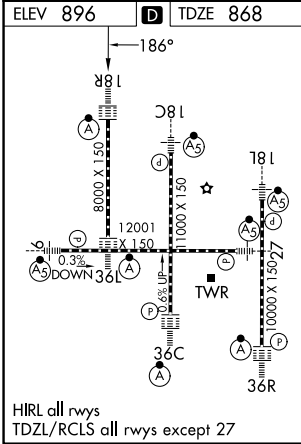
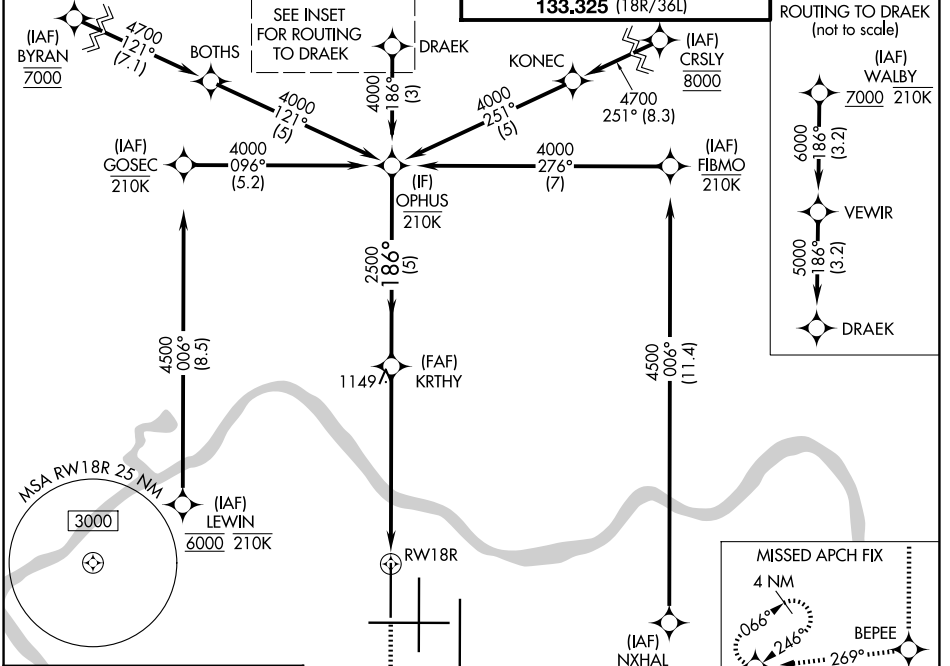
RNP APCH - GPS.

For uncompensated Baro-VNAV systems, LNAV/VNAV NA below -13°C or above 54°C. Simultaneous approach authorized with Rwy 18L/C. LNAV procedure NA during simultaneous operations. Use of FD or AP required during simultaneous operations. For inop ALS, increase LNAV/VNAV all Cats visibility to RVR 5500 and LNAV Cats C and D visibility to 1½ SM.

ALSF-2

MISSED APPROACH: Climb to 3000 direct BEPEE and on track 269° to AVIEW and hold.

|                          |  |   |                         |
|--------------------------|--|---|-------------------------|
| D-ATIS<br><b>134.375</b> | CINCINNATI APP CON<br><b>119.7 363.15</b> (090°-269°)<br><b>123.875 363.15</b> (270°-089°) | CINCINNATI TOWER<br><b>118.975 360.85</b> (18L/36R)<br><b>118.3</b> (9/27, 18C/36C)<br><b>133.325</b> (18R/36L) | GND CON<br><b>121.7</b> |
|--------------------------|--|---|-------------------------|



| 3000              | BEPEE   | tr 269°     | AVIEW                   | OPHUS                 |
|-------------------|---------|-------------|-------------------------|-----------------------|
| 1.4 NM to RWY 18R |         | 2500        | 4000                    | GP 3.00°<br>TCH 58    |
| 1.4 NM            | 3.6 NM  | 5 NM        |                         |                       |
| CATEGORY          | A       | B           | C                       | D                     |
| LPV DA            |         | 1068/18     | 200 (200-½)             |                       |
| LNAV/VNAV DA      |         | 1214/30     | 346 (400-¾)             |                       |
| LNAV MDA          | 1360/24 | 492 (500-½) | 1360/50                 | 492 (500-1)           |
| CIRCLING          | 1460-1  | 564 (600-1) | 1560-1¾<br>664 (700-1¾) | 1560-2<br>664 (700-2) |

SE-1, 14 MAY 2026 to 11 JUN 2026

SE-1, 14 MAY 2026 to 11 JUN 2026