

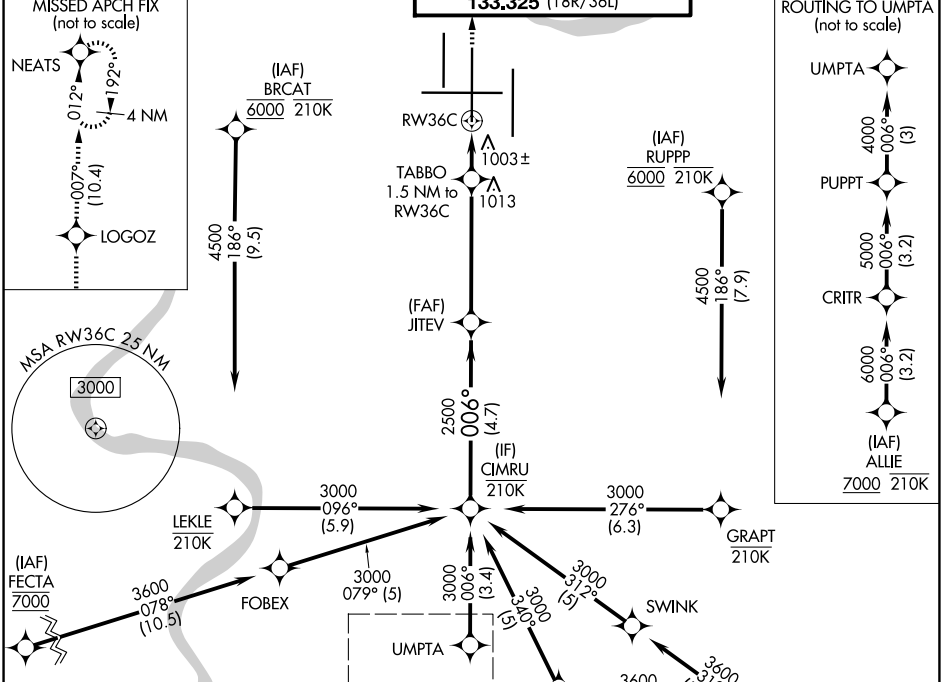
WAAS CH 97609 W36B	APP CRS 006°	Rwy Ldg 11000 TDZE 850 Apt Elev 896
--	------------------------	--

RNAV (GPS) Y RWY 36C

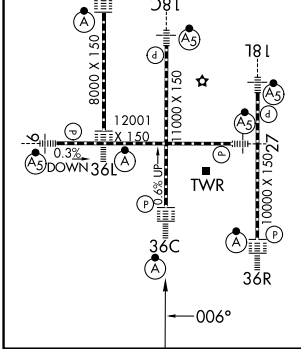
CINCINNATI/NORTHERN KENTUCKY INTL (CVG)

RNP APCH - GPS. ▼ For uncompensated Baro-VNAV systems, LNAV/VNAV NA below -13°C or above 54°C. Use of FD or AP required during simultaneous operations. Simultaneous approach authorized. LNAV procedure NA during simultaneous operations. For inop ALS, increase LNAV/VNAV visibility all Cats and LNAV Cat C and D visibility to RVR 6000.	ALSF-2 	MISSED APPROACH: Climb to 3000 direct LOGOZ and on track 007° to NEATS and hold.
--	------------	--

D-ATIS 134.375	CINCINNATI APP CON 119.7 363.15 (090°-269°) 123.875 363.15 (270°-089°)	CINCINNATI TOWER 118.975 360.85 (18L/36R) 118.3 (9/27, 18C/36C) 133.325 (18R/36L)	GND CON 121.7
--------------------------	--	---	-------------------------



ELEV 896	D TDZE 850
TDZL/RCLS all rwy's except 27 HIRL all rwy's	



VGSI and RNAV glidepath not coincident (VGSI Angle 3.00/TCH 77).			
CIMRU	JITEV	TABBO	NEATS
3000	2500	1.5 NM to RW36C	tr 007°
GP 3.00°	2500	1360	
TCH 52	4.7 NM	3.6 NM	1.5 NM
CATEGORY	A	B	C
LPV DA	1050/18 200 (200-½)		
LNAV/VNAV DA	1260/40 410 (400-¾)		
LNAV MDA	1260/24	410 (400-½)	1260/40 410 (400-¾)
CIRCLING	1460-1	564 (600-1)	1560-1¾ 664 (700-1¾) 1560-2 664 (700-2)

SE-1, 14 MAY 2026 to 11 JUN 2026

SE-1, 14 MAY 2026 to 11 JUN 2026