

WAAS CH <b>49099</b>	APP CRS <b>006°</b>	Rwy Ldg TDZE Apt Elev	<b>8000</b> <b>873</b> <b>896</b>
-------------------------	------------------------	-----------------------------	---

# RNAV (GPS) Y RWY 36L

CINCINNATI/NORTHERN KENTUCKY INTL (CVG)

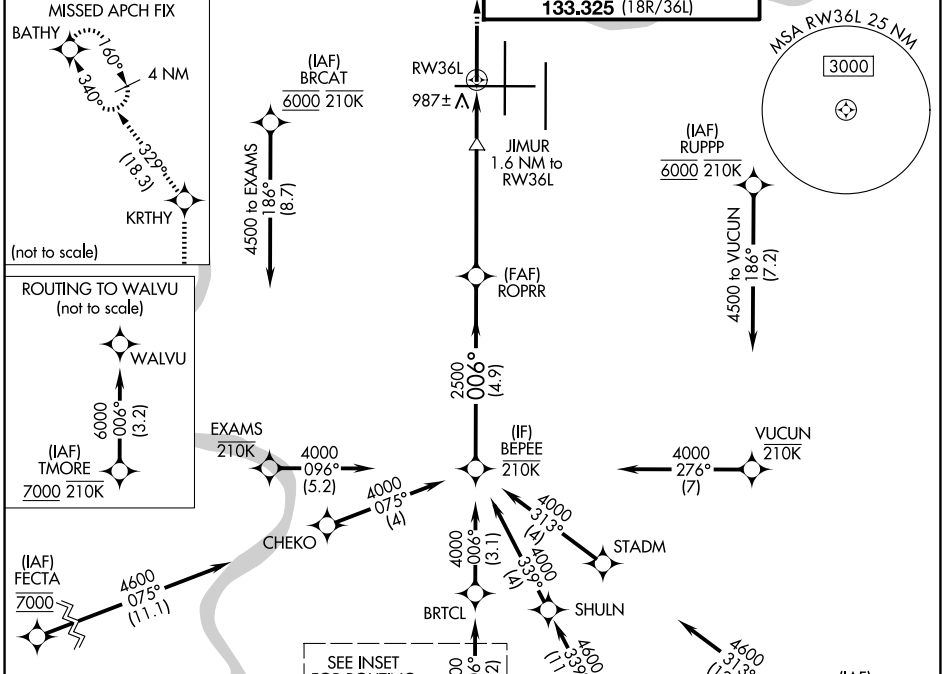
RNP APCH - GPS.

⚠ For uncompensated Baro-VNAV systems, LNAV/VNAV NA below -13°C or above 54°C. Use of FD or AP required during simultaneous operations. Simultaneous approach authorized. LNAV procedure NA during simultaneous operations. For inop ALS, increase LNAV/VNAV all Cats visibility to RVR 5500 and LNAV Cats C and D visibility to 5500.

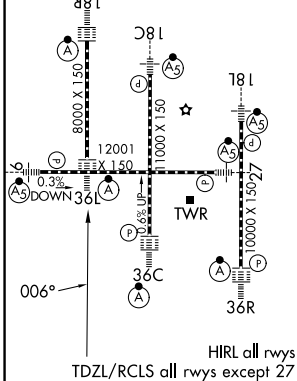
ALSF-2

MISSED APPROACH: Climb to 3000 direct KRTHY and on 329° track to BATHY and hold.

D-ATIS <b>134.375</b>	CINCINNATI APP CON <b>119.7 363.15</b> (090°-269°) <b>123.875 363.15</b> (270°-089°)	CINCINNATI TOWER <b>118.975 360.85</b> (18L/36R) <b>118.3</b> (9/27, 18C/36C) <b>133.325</b> (18R/36L)	GND CON <b>121.7</b>
--------------------------	--	---	-------------------------



ELEV 896	<b>D</b>	TDZE 873
----------	----------	----------



BEPEE	ROPRR	JIMUR 1.6 NM to RW36L	3000	KRTHY	tr 329°	BATHY
4000	2500	1440	1 NM to RW36L	RW36L		
GP 3.00°	TCH 55	4.9 NM	3.3 NM	0.7 NM	1 NM	
CATEGORY	A	B	C	D		
LPV DA		1073/18	200 (200-½)			
LNAV/VNAV DA		1240/35	367 (400-⅝)			
LNAV MDA	1240/24	367 (400-½)	1240/35	367 (400-⅝)		
CIRCLING	1460-1	564 (600-1)	1560-1¾ 664 (700-1¾)	1560-2 664 (700-2)		

SE-1, 14 MAY 2026 to 11 JUN 2026

SE-1, 14 MAY 2026 to 11 JUN 2026