

SARGO FIVE ARRIVAL (RNAV)
(SARGO.SARGO5) 22JAN26

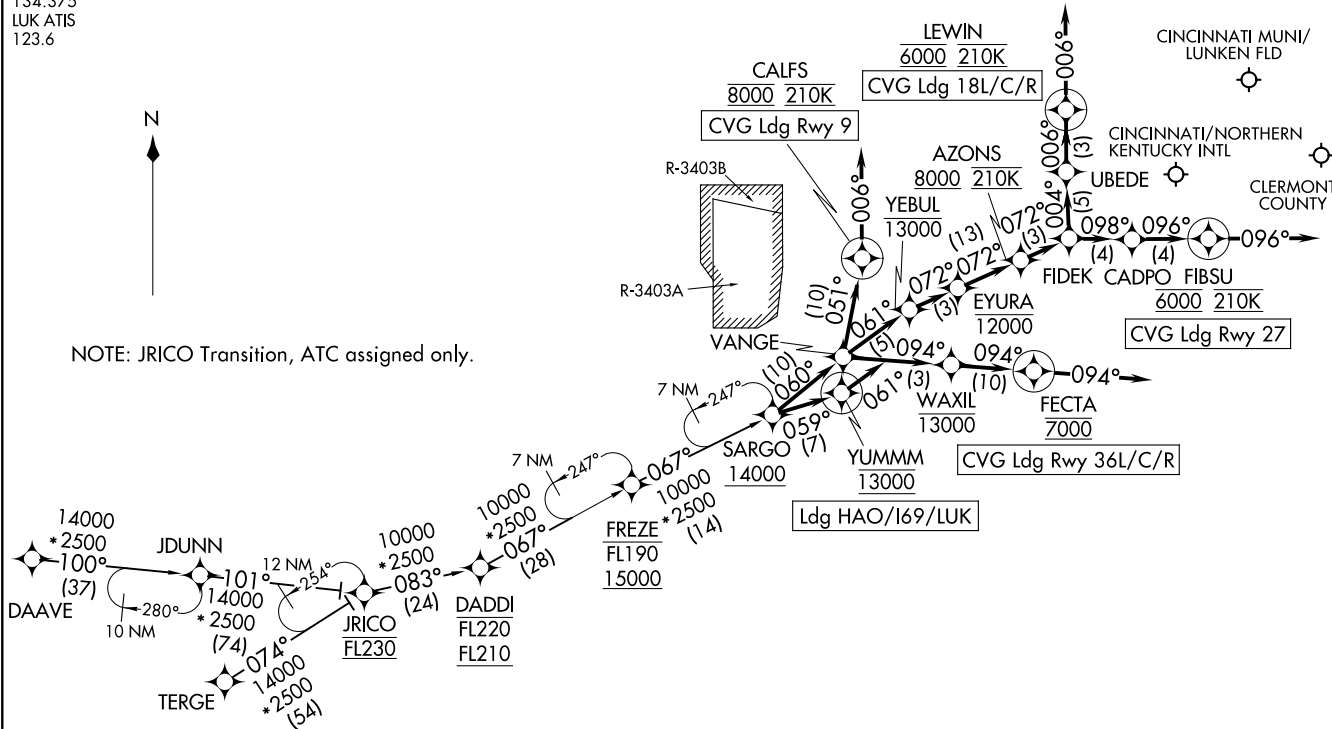
(SARGO.SARGO5) 26022
SARGO FIVE ARRIVAL (RNAV)

CINCINNATI APP CON
119.7 363.15 (090°-269°)
123.875 363.15 (270°-089°)
CVG D-ATIS
134.375
LUK ATIS
123.6

RNAV 1 - DME/DME/IRU or GPS.
RADAR required.



NOTE: JRICO Transition, ATC assigned only.



BUTLER COUNTY
RGNL/HOGAN FLD

CINCINNATI MUNI/
LUNKEN FLD

CINCINNATI/NORTHERN
KENTUCKY INTL

CLERMONT
COUNTY

AL-655 (FAA)

(CONTINUED ON FOLLOWING PAGE)

NOTE: Chart not to scale.

COVINGTON, KENTUCKY

COVINGTON, KENTUCKY

ARRIVAL ROUTE DESCRIPTION

DAAVE TRANSITION (DAAVE.SARGO5):

JRICO TRANSITION (JRICO.SARGO5):

TERGE TRANSITION (TERGE.SARGO5):

CVG: From SARGO on track 060° to VANGE.

LANDING CVG RUNWAY 9: From VANGE on track 051° to cross CALFS at 8000 and at 210K, then on heading 006°. Expect RADAR vectors to final approach course for ILS, GPS, or RNP Rwy 9 approach.

LANDING CVG RUNWAYS 18L/C/R: From VANGE on track 061° to cross YEBUL at or below 13000, then on track 072° to cross EYURA at or below 12000, then on track 072° to cross AZONS at or above 8000 and at 210K, then on track 072° to FIDEK, then on track 004° to UBEDE, then on track 006° to cross LEWIN at 6000 and at 210K, then on track 006°. Expect RADAR vectors to final approach course for ILS, GPS, or RNP Rwy 18L/C/R approach.

LANDING CVG RUNWAY 27: From VANGE on track 061° to cross YEBUL at or below 13000, then on track 072° to cross EYURA at or below 12000, then on track 072° to cross AZONS at or above 8000 and at 210K, then on track 072° to FIDEK, then on track 098° to CADPO, then on track 096° to cross FIBSU at 6000 and at 210K, then on track 096°. Expect RADAR vectors to final approach course for ILS, GPS, or RNP Rwy 27 approach.

LANDING CVG RUNWAYS 36L/C/R: From VANGE on track 094° to cross WAXIL at or below 13000, then on track 094° to cross FECTA at 7000, then on track 094°. Expect RADAR vectors to final approach course for ILS, GPS, or RNP Rwy 36L/C/R approach.

LANDING I69/LUK/HAO: From SARGO on track 059° to cross YUMMM at 13000, then on track 061°. Expect RADAR vectors to final approach course.

SE-1, 14 MAY 2026 to 11 JUN 2026

SE-1, 14 MAY 2026 to 11 JUN 2026