

WAAS CH 65747 W13A	APP CRS 130°	Rwy Ldg 5696 TDZE 947 Apt Elev 974
--	------------------------	---

RNAV (GPS) RWY 13

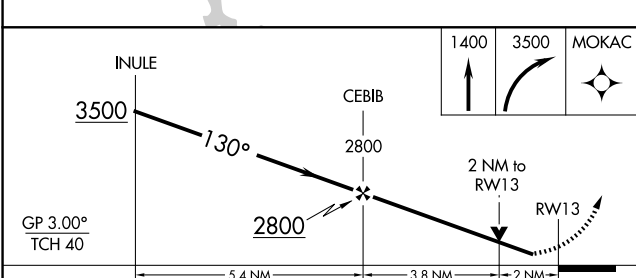
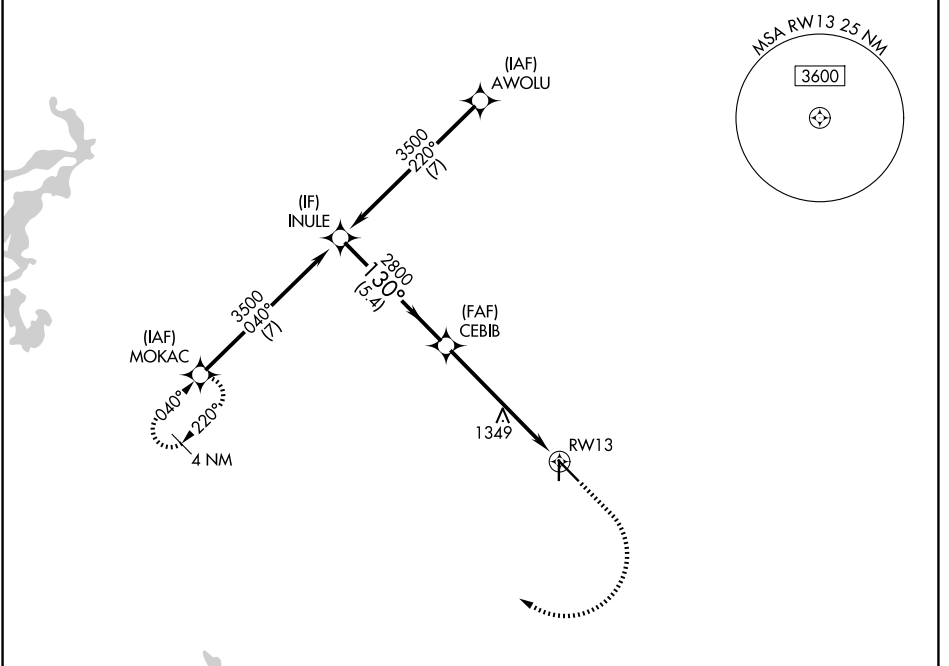
MINERAL WELLS RGNL (MWL)

RNP APCH - GPS.

⚠ Circling Rws 17, 35 NA at night. For uncompensated Baro-VNAV systems, LNAV/VNAV NA below -8°C or above 54°C. Rwy 13 helicopter visibility reduction below 1 SM NA.

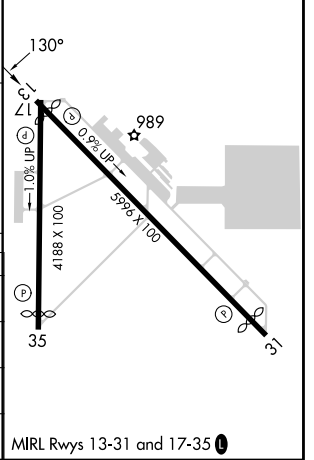
⚠ MISSED APPROACH: Climb to 1400 then climbing right turn to 3500 direct MOKAC and hold.

ASOS 135.075	FORT WORTH CENTER 127.0 360.6	UNICOM 122.725 (CTAF) 0
------------------------	---	-----------------------------------



ELEV 974	TDZE 947
----------	----------

CATEGORY	A	B	C	D
LPV DA		1197-1	250 (300-1)	
LNAV/VNAV DA		1198-1	251 (300-1)	
LNAV MDA	1600-1	653 (700-1)	1600-1 $\frac{7}{8}$	653 (700-1 $\frac{7}{8}$)
CIRCLING	1600-1	626 (700-1)	1740-2 $\frac{1}{4}$ 766 (800-2 $\frac{1}{4}$)	1740-2 $\frac{1}{2}$ 766 (800-2 $\frac{1}{2}$)



SC-2, 14 MAY 2026 to 11 JUN 2026

SC-2, 14 MAY 2026 to 11 JUN 2026