

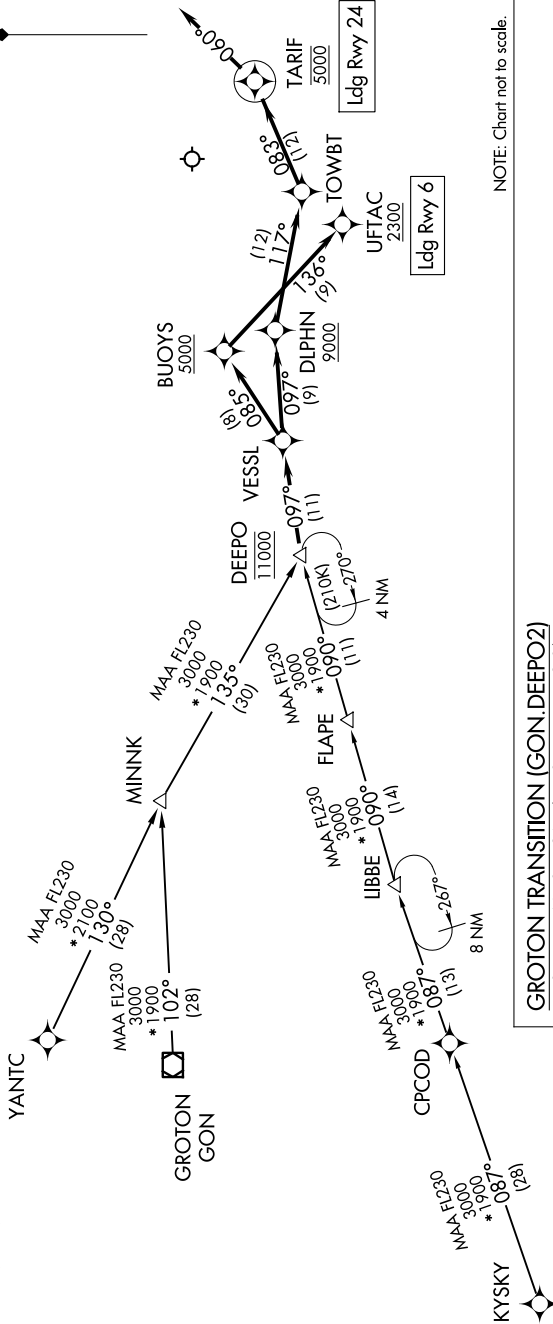
# DEEPO TWO ARRIVAL (RNAV)

NE-1, 14 MAY 2026 to 11 JUN 2026

BOSTON APP CON  
133.75 318.1  
ATIS  
127.5  
NANTUCKET TOWER \*  
118.3 (CTAF)

RNAV 1 - DME/DME/IRU or GPS  
RADAR required

N



GROTON TRANSITION (GON.DEEPO2)  
KYSKY TRANSITION (KYSKY.DEEPO2)  
YANTIC TRANSITION (YANTIC.DEEPO2)

From DEEPO on track 097° to VESSL.

LANDING RUNWAY 6: From VESSL on track 085° to cross BUOYS at or above 5000, then on track 136° to cross UFTAC at or above 2300. Expect ILS or LOC RWY 6 approach.  
LANDING RUNWAY 24: From VESSL on track 097° to cross DILPHN at or above 9000, then on track 117° to TOWBT, then on track 083° to cross TARIF at 5000, then on track 060°. Expect RADAR vectors to final approach course.

# DEEPO TWO ARRIVAL (RNAV)

NE-1, 14 MAY 2026 to 11 JUN 2026