

WAAS CH 77835 W33A	APP CRS 329°	Rwy Ldg 4500 TDZE 41 Apt Elev 47
--	------------------------	---

RNAV (GPS) RWY 33

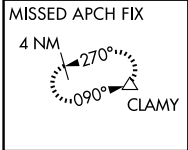
NANTUCKET MEML (ACK)

RNP APCH - GPS.

⚠ For uncompensated Baro-VNAV systems, LNAV/VNAV NA below -12°C or above 54°C. Rwy 33 helicopter visibility reduction below 3/4 SM NA.

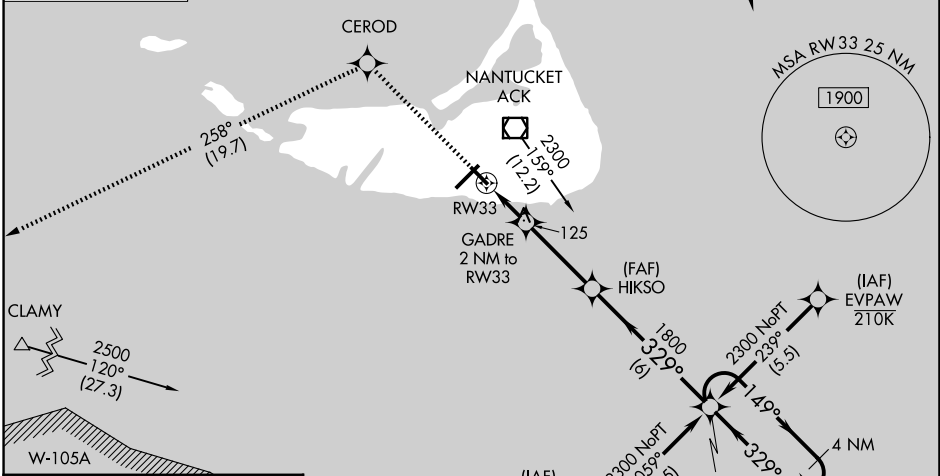
MISSED APPROACH: Climb to 2500 direct CEROD and on track 258° to CLAMY and hold.

ATIS 127.5	BOSTON APP CON 126.1 318.1	NANTUCKET TOWER ★ 118.3 (CTAF) 0	GND CON 132.5	UNICOM 122.95
----------------------	--------------------------------------	--	-------------------------	-------------------------

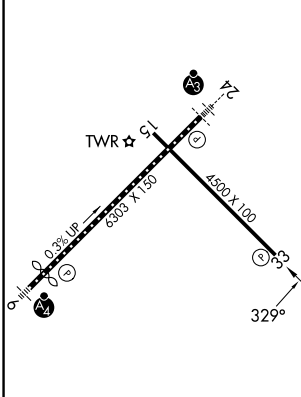


Procedure NA for arrivals at LFV VOR/DME on V167 northeast bound.

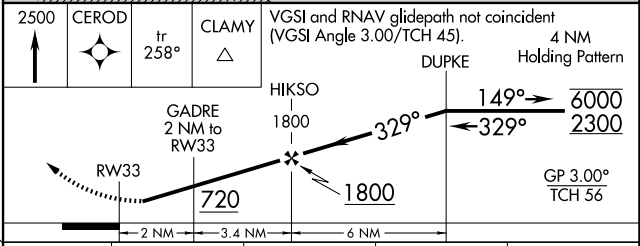
MARCONI LFV



ELEV 47	D	TDZE 41
---------	----------	---------



TDZL/RCLS Rwy 24
REIL Rwys 15 and 33
MIRL Rwy 15-33 **0**
HIRL Rwy 6-24 **0**



CATEGORY	A	B	C	D
LPV DA		291-3/4	250 (300-3/4)	
LNAV/VNAV DA		301-1	260 (300-1)	
LNAV MDA		380-1	339 (400-1)	
CIRCLING	480-1 433 (500-1)	500-1 453 (500-1)	720-2 673 (700-2)	1000-3 953 (1000-3)

NE-1, 14 MAY 2026 to 11 JUN 2026

NE-1, 14 MAY 2026 to 11 JUN 2026