

WAAS CH 81912 W06A	APP CRS 059°	Rwy Ldg TDZE Apt Elev	5765 38 47
----------------------------------------	------------------------	-----------------------------	---------------------------------------

RNAV (GPS) RWY 6

NANTUCKET MEML (ACK)

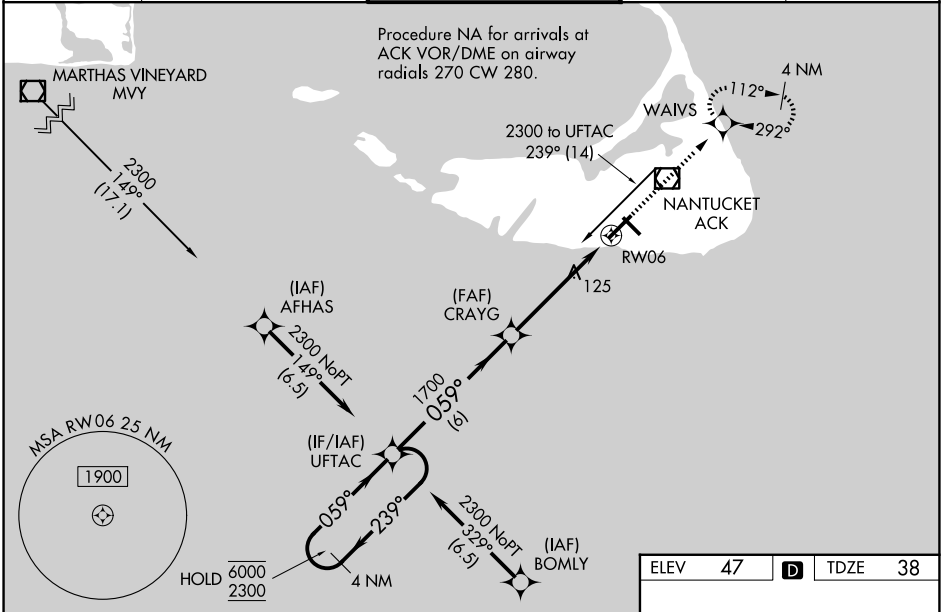
RNP APCH - GPS.

⚠ For uncompensated Baro-VNAV systems, LNAV/VNAV NA below -12°C or above 54°C. For inop ALS increase LNAV/VNAV visibility all Cats to RVR 4500, and LNAV visibility all Cats to RVR 5500. Inop table does not apply to LPV.

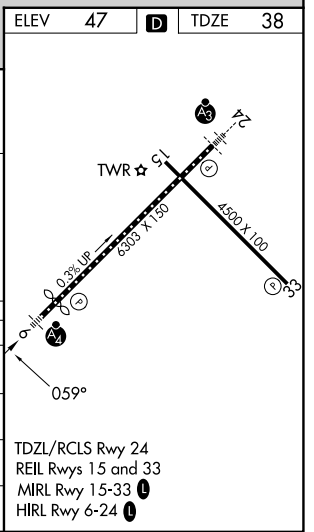
MALSF

MISSED APPROACH: Climb to 1800 direct WAIVS and hold, continue climb in hold to 1800.

ATIS 127.5	BOSTON APP CON 126.1 318.1	NANTUCKET TOWER ★ 118.3 (CTAF) 0	GND CON 132.5	UNICOM 122.95
----------------------	--------------------------------------	--------------------------------------------	-------------------------	-------------------------



4 NM Holding Pattern UFTAC		1800 WAIVS		
6000	← 239°	059° →	059°	
2300				
GP 3.00°		1700	0.9 NM to RW06	
TCH 57				
	6 NM	4.2 NM	0.9	
CATEGORY	A	B	C	D
LPV DA		238/40	200 (200-¾)	
LNAV/VNAV DA		300/40	262 (300-¾)	
LNAV MDA		380/40	342 (400-¾)	
CIRCLING	480-1 433 (500-1)	500-1 453 (500-1)	720-2 673 (700-2)	720-2¼ 673 (700-2¼)



NE-1, 14 MAY 2026 to 11 JUN 2026

NE-1, 14 MAY 2026 to 11 JUN 2026