


ACK VOR/DME <b>116.2</b> Chan <b>109</b>	APP CRS <b>240°</b>	Rwy Ldg <b>6303</b> TDZE <b>48</b> Apt Elev <b>48</b>
--	------------------------	---

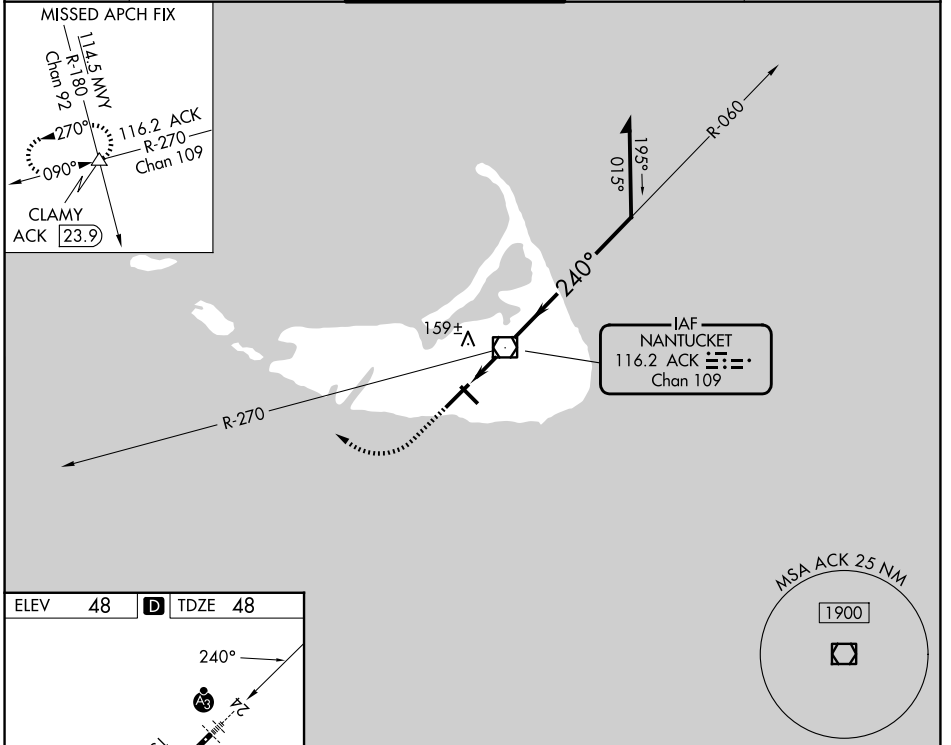
# VOR RWY 24

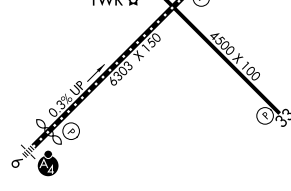

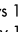
NANTUCKET MEML (ACK)

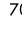

⚠ When local altimeter setting not received, use HYA altimeter setting and increase all MDAs 80 feet and S-24 visibility Cat C and D to RVR 5000 and increase Circling visibility Cats C and D ¼ SM. For inoperative SSALR: for inop ALS, increase S-24 Cats C and D visibility to RVR 6000. For inop ALS when using HYA altimeter setting, increase S-24 Cats C and D visibility to 1¾.

SSALR  MISSED APPROACH: Climb to 700 then climbing right turn to 2500 via heading 310° and ACK VOR/DME R-270 to CLAMY INT/ACK 23.9 DME and hold.

ATIS <b>127.5</b>	BOSTON APP CON <b>126.1 318.1</b>	NANTUCKET TOWER ★ <b>118.3 (CTAF)</b> 	GND CON <b>132.5</b>	UNICOM <b>122.95</b>
----------------------	--------------------------------------	--	-------------------------	-------------------------



ELEV <b>48</b> <b>D</b> TDZE <b>48</b>

TDZL/RCLS Rwy 24 REIL Rwys 15 and 33 MIRL Rwy 15-33  HIRL Rwy 6-24 
FAF to MAP 1.9 NM
Knots 60 90 120 150 180 Min:Sec 1:54 1:16 0:57 0:46 0:38

700	2500	CLAMY	ACK VOR/DME	Remain within 10 NM
	 hdg 310°	ACK R-270	6000	
		ACK 0.9	060°	1800
		ACK 1.9	3.47°	240°
			TCH 48	800
				VGSI and descent angles not coincident (VGSI Angle 3.00/TCH 48).
CATEGORY	A	B	C	D
S-24	440/24	393 (400-½)	440/40	393 (400-¾)
CIRCLING	480-1 433 (500-1)	500-1 453 (500-1)	720-2 673 (700-2)	720-2¼ 673 (700-2¼)

NE-1, 14 MAY 2026 to 11 JUN 2026

NE-1, 14 MAY 2026 to 11 JUN 2026