



(GIDGT4.GIDGT) 14MAY26

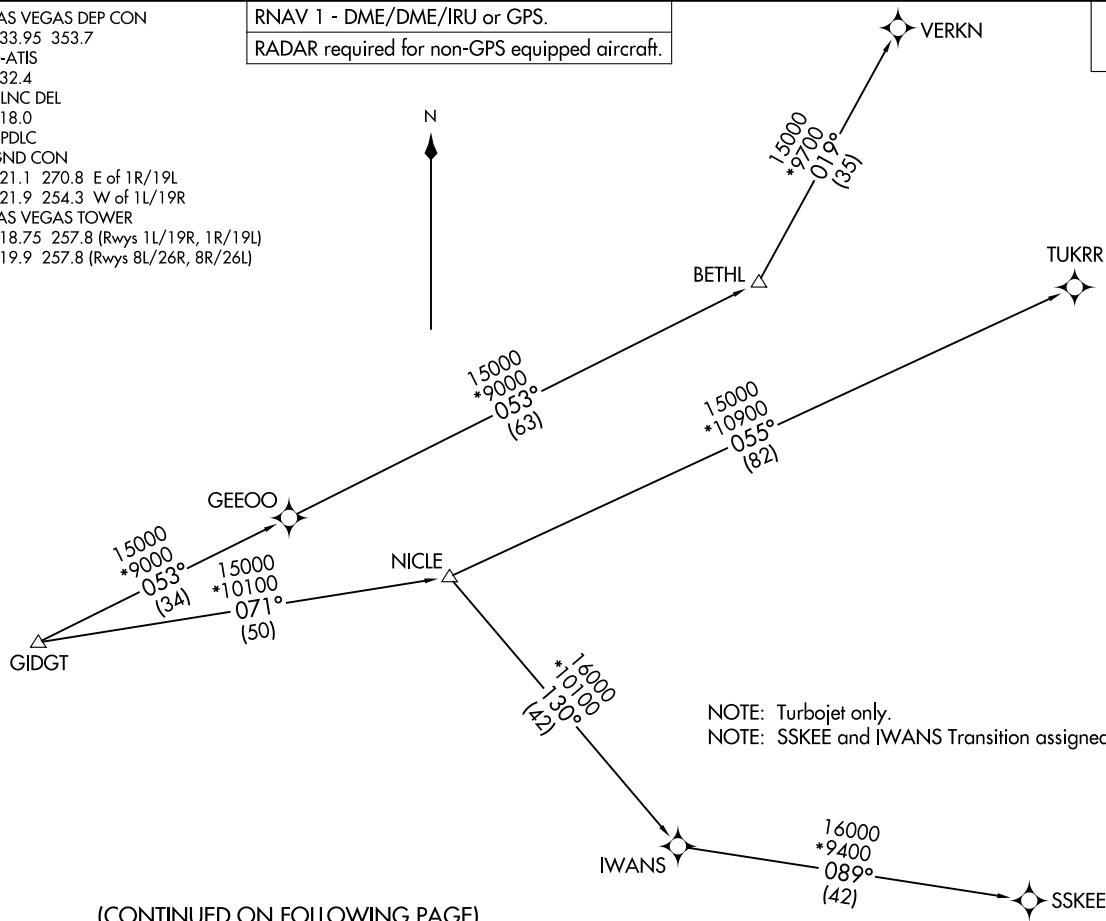
GIDGT FOUR DEPARTURE (RNAV) Transition Routes

LAS VEGAS, NEVADA  
HARRY REID INTL (LAS)

LAS VEGAS DEP CON  
133.95 353.7  
D-ATIS  
132.4  
CLNC DEL  
118.0  
CPDLC  
GND CON  
121.1 270.8 E of 1R/19L  
121.9 254.3 W of 1L/19R  
LAS VEGAS TOWER  
118.75 257.8 (Rwys 1L/19R, 1R/19L)  
119.9 257.8 (Rwys 8L/26R, 8R/26L)

RNAV 1 - DME/DME/IRU or GPS.  
RADAR required for non-GPS equipped aircraft.

TOP ALTITUDE:  
FL190



(CONTINUED ON FOLLOWING PAGE)

NOTE: Turbojet only.  
NOTE: SSKEE and IWANS Transition assigned by ATC - do not file.

NOTE: Chart not to scale.

(GIDGT4.GIDGT) 26134

GIDGT FOUR DEPARTURE (RNAV) Transition Routes

LAS VEGAS, NEVADA  
HARRY REID INTL (LAS)

Alt-662 (FAA)



DEPARTURE ROUTE DESCRIPTION

TAKEOFF RUNWAYS 1L/R: Climb on heading 014° to intercept course 072° to KYBAD, then on track 072° to HAIDN, then on track 073° to cross AIRRO at or above 11500 and at or below 250K, then on track 075° to GIDGT, thence. . . .

TAKEOFF RUNWAYS 8L/R: Climb on heading 079° to 2681, then direct to cross AYVUH at or above 6000, then on track 079° to MLVIN, then on track 064° to cross GEEZY at or above 12000, then on track 065° to cross JETTG at or below 14000, then on track 065° to GIDGT, thence. . . .

TAKEOFF RUNWAY 19L: Climb on heading 194° to intercept course 271° to cross LEELN at or below 8000, then on track 336° to cross GLIAN at or above 5000 at or below 230K, then on track 050° to cross BACCK at or above 6000, then on track 058° to cross ALOLY at or above 7000, then on track 079° to cross TTEEA at or above 14000, then on track 079° to GIDGT, thence. . . .

TAKEOFF RUNWAY 19R: Climb on heading 194° to intercept course 270° to cross LEELN at or below 8000, then on track 336° to cross GLIAN at or above 5000 and at or below 230K, then on track 050° to cross BACCK at or above 6000, then on track 058° to cross ALOLY at or above 7000, then on track 079° to cross TTEEA at or above 14000, then on track 079° to GIDGT, thence. . . .

TAKEOFF RUNWAYS 26L/R: Climb on heading 259° to 2681, then direct to cross LEELN at or below 8000, then on track 336° to cross GLIAN at or above 5000 and at or below 230K, then on track 050° to cross BACCK at or above 6000, then on track 058° to cross ALOLY at or above 7000, then on track 079° to cross TTEEA at or above 14000, then on track 079° to GIDGT, thence. . . .

. . . .on (transition). Maintain FL190. Expect filed altitude 10 minutes after departure.

IWANS TRANSITION (GIDGT4.IWANS)

SSKEE TRANSITION (GIDGT4.SSKEE)

TUKRR TRANSITION (GIDGT4.TUKRR)

VERKN TRANSITION (GIDGT4.VERKN)

SW-4, 14 MAY 2026 to 11 JUN 2026

SW-4, 14 MAY 2026 to 11 JUN 2026