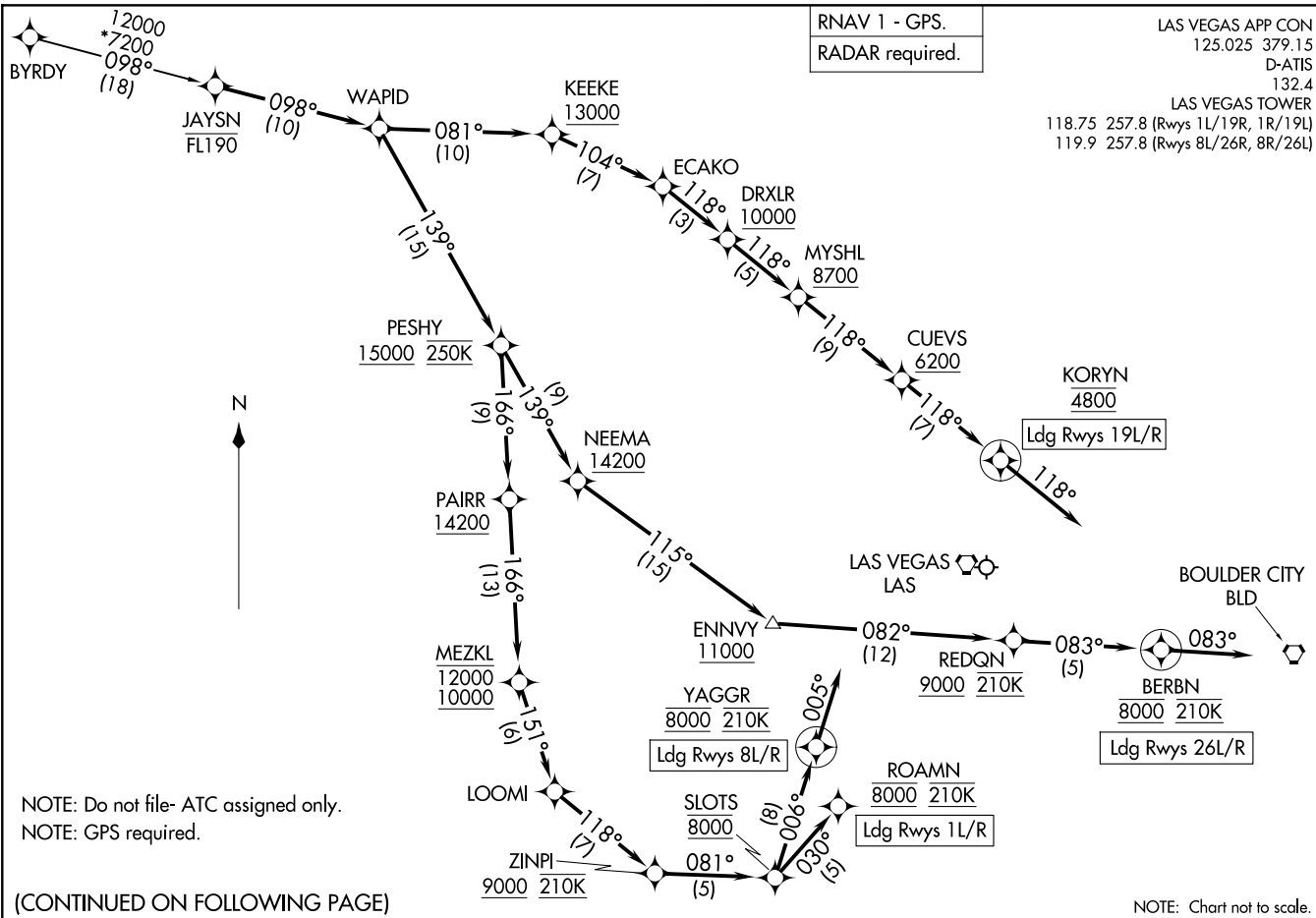


JAYSN THREE ARRIVAL (RNAV)
(JAYSN.JAYSN3) 31OCT24

(JAYSN.JAYSN3) 24305
JAYSN THREE ARRIVAL (RNAV)



NOTE: Do not file- ATC assigned only.
NOTE: GPS required.

(CONTINUED ON FOLLOWING PAGE)

LAS VEGAS, NEVADA
HARRY REID INTL (LAS)

HARRY REID INTL (LAS)
LAS VEGAS, NEVADA

AL-662 (FAA)

ARRIVAL ROUTE DESCRIPTION

BYRDY TRANSITION (BYRDY.JAYSN3)

From JAYSN on track 098° to WAPID.

LANDING RUNWAYS 1L/R: From WAPID on track 139° to cross PESHY at or above 15000 and at 250K, then on track 166° to cross PAIRR at or above 14200, then on track 166° to cross MEZKL between 10000 and 12000, then on track 151° to LOOMI, then on track 118° to cross ZINPI at or above 9000 and at 210K, then on track 081° to cross SLOTS at 8000, then on track 030° to cross ROAMN at 8000 and at 210K. Expect ILS or LOC RWY 1L or RADAR vectors to final approach course.

LANDING RUNWAYS 8L/R: From WAPID on track 139° to cross PESHY at or above 15000 and at 250K, then on track 166° to cross PAIRR at or above 14200, then on track 166° to cross MEZKL between 10000 and 12000, then on track 151° to LOOMI, then on track 118° to cross ZINPI at or above 9000 and at 210K, then on track 081° to cross SLOTS at 8000, then on track 006° to cross YAGGR at 8000 and at 210K, then on track 005° . Expect RADAR vectors to final approach course.

LANDING RUNWAYS 19L/R: From WAPID on track 081° to cross KEEKE at or above 13000, then on track 104° to ECAKO, then on track 118° to cross DRXLR at or above 10000, then on track 118° to cross MYSHL at or above 8700, then on track 118° to cross CUEVS at or above 6200, then on track 118° to cross KORYN at 4800, then on track 118°. Expect RADAR vectors to final approach course.

LANDING RUNWAYS 26L/R: From WAPID on track 139° to cross PESHY at or above 15000 and at 250K, then on track 139° to cross NEEMA at or above 14200, then on track 115° to cross ENNVY at or above 11000, then on track 082° to cross REDQN at or above 9000 and at 210K, then on track 083° to cross BERBN at 8000 and at 210K, then on track 083°. Expect RADAR vectors to final approach course.

LOST COMMUNICATIONS

LANDING RUNWAY 8R: At YAGGR proceed on the RNAV (RNP) RWY 8R approach, if unable, proceed visually to intercept the final approach course; if unable, maintain 8000 proceed to LAS VORTAC then maintain 7000 proceed to BLD VORTAC and then on the ILS or LOC RWY 26L approach.

SW-4, 14 MAY 2026 to 11 JUN 2026

SW-4, 14 MAY 2026 to 11 JUN 2026