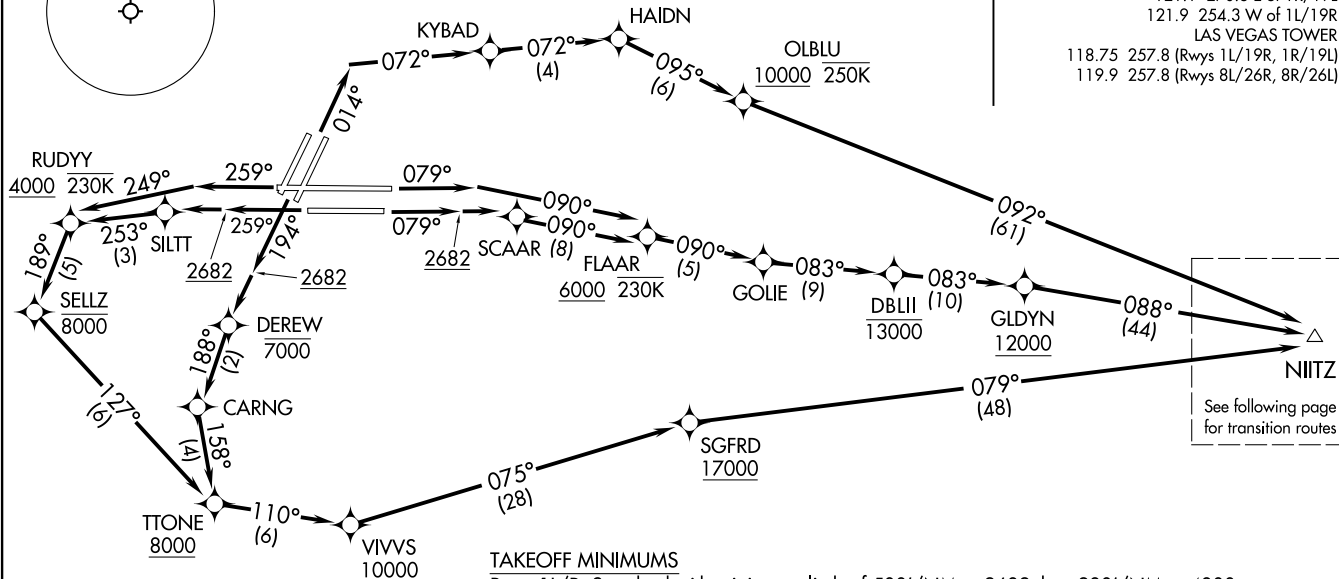
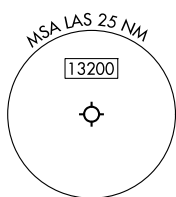


RNAV 1 - DME/DME/IRU or GPS.
 RADAR required for non-GPS equipped aircraft.

LAS VEGAS DEP CON
 125.9 307.25 (Rwys 19L/R, 26L/R)
 133.95 353.7 (Rwys 1L/R, 8L/R)
 D-ATIS 132.4
 CLNC DEL 118.0
 CPDLC
 GND CON
 121.1 270.8 E of 1R/19L
 121.9 254.3 W of 1L/19R
 LAS VEGAS TOWER
 118.75 257.8 (Rwys 1L/19R, 1R/19L)
 119.9 257.8 (Rwys 8L/26R, 8R/26L)

**TOP ALTITUDE:
 FL190**

NOTE: Do not file. TUKRR and IWANS transitions assigned by ATC.
 NOTE: Turbojets only.
 NOTE: If unable to accept climb rates, advise ATC on initial contact.



TAKEOFF MINIMUMS

Rwys 1L/R: Standard with minimum climb of 500'/NM to 2682 then 280'/NM to 4800.
 Rwys 8L/R: Standard with minimum climb of 500'/NM to 2682.
 Rwys 19L/R: Standard with minimum climb of 571'/NM to 8000.
 Rwys 26L/R: Standard with minimum climb of 500'/NM to 2682 then 240'/NM to 5000.

See following page for transition routes

(CONTINUED ON FOLLOWING PAGE)

NOTE: Chart not to scale.

NIITZ FOUR DEPARTURE (RNAV) Departure Routes
 (NIITZ4.NIITZ) 24305
 HARRY REID INTL (LAS)
 LAS VEGAS, NEVADA
 HARRY REID INTL (LAS)
 LAS VEGAS, NEVADA
 (NIITZ4.NIITZ) 31OCT24

NIITZ FOUR DEPARTURE (RNAV) Departure Routes
 AT-652 (FAA)
 HARRY REID INTL (LAS)
 LAS VEGAS, NEVADA

(N11TZ4.N11TZ) 31OCT24

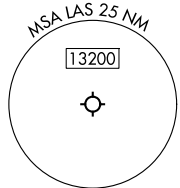
N11TZ FOUR DEPARTURE (RNAV) Transition Routes

LAS VEGAS, NEVADA
HARRY REID INTL (LAS)

LAS VEGAS DEP CON
 125.9 307.25 (Rwys 19L/R, 26L/R)
 133.95 353.7 (Rwys 1L/R, 8L/R)
 D-ATIS
 132.
 CLNC DEL
 118.0
 CPDLC
 GND CON
 121.1 270.8 E of 1R/19L
 121.9 254.3 W of 1L/19R
 LAS VEGAS TOWER
 118.75 257.8 (Rwys 1L/19R, 1R/19L)
 119.9 257.8 (Rwys 8L/26R, 8R/26L)

RNAV 1 - DME/DME/IRU or GPS.
 RADAR required for non-GPS equipped aircraft.

**TOP ALTITUDE:
 FL190**



N11TZ

IWANS

SSKEE

HOCEE

TUKRR

17000
 *11100
 046°
 (108)

17000
 *10600
 068°
 (98)

17000
 *9600
 089°
 (42)

17000
 *9400
 089°
 (42)

NOTE: Do not file. TUKRR and IWANS transitions assigned by ATC.
 NOTE: Turbojets only.
 NOTE: If unable to accept climb rates, advise ATC on initial contact.



(N11TZ4.N11TZ) 24305

AL-662 (FAA)
 Transition Routes

HARRY REID INTL (LAS)
 LAS VEGAS, NEVADA

NOTE: Chart not to scale.

(CONTINUED ON FOLLOWING PAGE)



DEPARTURE ROUTE DESCRIPTION

TAKEOFF RUNWAYS 1L/R: Climb on heading 014° to intercept course 072° to KYBAD, then on track 072° to HAIDN, then on track 095° to cross OLBLU at or above 10000 and at or below 250K, then on track 092° to NIITZ, thence

TAKEOFF RUNWAY 8L: Climb on heading 079° to intercept course 090° to cross FLAAR at or above 6000 and at or below 230K, then on track 090° to GOLIE, then on track 083° to cross DBLII at or below 13000, then on track 083° to cross GLDYN at or above 12000, then on track 088° to NIITZ, thence

TAKEOFF RUNWAY 8R: Climb on heading 079° to 2682, then direct SCAAR, then on track 090° to cross FLAAR at or above 6000 and at or below 230K, then on track 090° to GOLIE, then on track 083° to cross DBLII at or below 13000, then on track 083° to cross GLDYN at or above 12000, then on track 088° to NIITZ, thence

TAKEOFF RUNWAYS 19L/R: Climb on heading 194° to 2682, then direct DEREW to cross at or below 7000, then on track 188° to CARNG, then on track 158° to cross TTONE at or above 8000, then on track 110° to cross VIVVS at or above 10000, then on track 075° to cross SGFRD at or above 17000, then on track 079° to NIITZ, thence

TAKEOFF RUNWAY 26L: Climb on heading 259° to 2682, then direct SILTT, then on track 253° to cross RUDYY at or above 4000 and at or below 230K, then on track 189° to cross SELLZ at or below 8000, then on track 127° to cross TTONE at or above 8000, then on track 110° to cross VIVVS at or above 10000, then on track 075° to cross SGFRD at or above 17000, then on track 079° to NIITZ, thence

TAKEOFF RUNWAY 26R: Climb on heading 259° to intercept course 249° to cross RUDYY at or above 4000 and at or below 230K, then on track 189° to cross SELLZ at or below 8000, then on track 127° to cross TTONE at or above 8000, then on track 110° to cross VIVVS at or above 10000, then on track 075° to cross SGFRD at or above 17000, then on track 079° to NIITZ, thence

. . . . on (transition), maintain FL190. Expect filed altitude 10 minutes after departure.

HOCEE TRANSITION (NIITZ4.HOCEE)

IWANS TRANSITION (NIITZ4.IWANS)

SSKEE TRANSITION (NIITZ4.SSKEE)

TUKRR TRANSITION (NIITZ4.TUKRR)

SW-4, 14 MAY 2026 to 11 JUN 2026

SW-4, 14 MAY 2026 to 11 JUN 2026