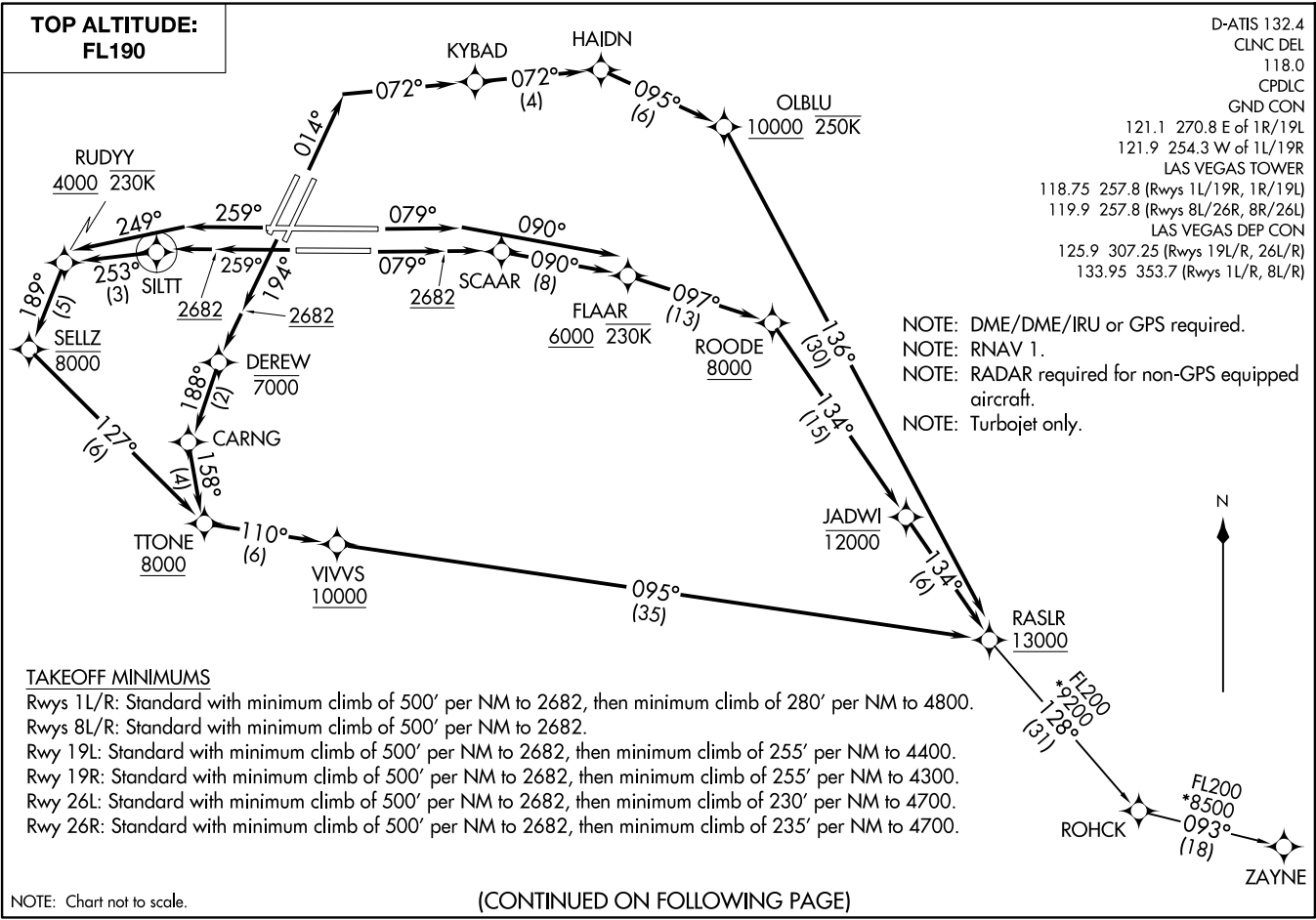


RASLR THREE DEPARTURE (RNAV)
(RASLR3, RASLR) 27JAN22

(RASLR3, RASLR) 24219
RASLR THREE DEPARTURE (RNAV)

AL-662 (FAA)
HARRY REID INTL (LAS)
LAS VEGAS, NEVADA

**TOP ALTITUDE:
FL190**



D-ATIS 132.4
 CLNC DEL
 118.0
 CPDLC
 GND CON
 121.1 270.8 E of 1R/19L
 121.9 254.3 W of 1L/19R
 LAS VEGAS TOWER
 118.75 257.8 (Rwys 1L/19R, 1R/19L)
 119.9 257.8 (Rwys 8L/26R, 8R/26L)
 LAS VEGAS DEP CON
 125.9 307.25 (Rwys 19L/R, 26L/R)
 133.95 353.7 (Rwys 1L/R, 8L/R)

NOTE: DME/DME/IRU or GPS required.
 NOTE: RNAV 1.
 NOTE: RADAR required for non-GPS equipped aircraft.
 NOTE: Turbojet only.

TAKEOFF MINIMUMS

Rwys 1L/R: Standard with minimum climb of 500' per NM to 2682, then minimum climb of 280' per NM to 4800.
 Rwys 8L/R: Standard with minimum climb of 500' per NM to 2682.
 Rwy 19L: Standard with minimum climb of 500' per NM to 2682, then minimum climb of 255' per NM to 4400.
 Rwy 19R: Standard with minimum climb of 500' per NM to 2682, then minimum climb of 255' per NM to 4300.
 Rwy 26L: Standard with minimum climb of 500' per NM to 2682, then minimum climb of 230' per NM to 4700.
 Rwy 26R: Standard with minimum climb of 500' per NM to 2682, then minimum climb of 235' per NM to 4700.

NOTE: Chart not to scale.

(CONTINUED ON FOLLOWING PAGE)

LAS VEGAS, NEVADA
HARRY REID INTL (LAS)



DEPARTURE ROUTE DESCRIPTION

TAKEOFF RUNWAYS 1L/R: Climb on heading 014° to intercept course 072° to KYBAD, then on track 072° to HAIDN, then on track 095° to cross OLBLU at or above 10000 and at or below 250K, then on track 136° to cross RASLR at or above 13000, thence. . . .

TAKEOFF RUNWAY 8L: Climb on heading 079° to intercept course 090° to cross FLAAR at or above 6000 and at or below 230K, then on track 097° to cross ROODE at or above 8000, then on track 134° to cross JADWI at or below 12000, then on track 134° to cross RASLR at or above 13000, thence. . . .

TAKEOFF RUNWAY 8R: Climb on heading 079° to 2682, then direct SCAAR, then on track 090° to cross FLAAR at or above 6000 and at or below 230K, then on track 097° to cross ROODE at or above 8000, then on track 134° to cross JADWI at or below 12000, then on track 134° to cross RASLR at or above 13000, thence. . . .

TAKEOFF RUNWAYS 19L/R: Climb on heading 194° to 2682, then direct DEREW at or below 7000, then on track 188° to CARNG, then on track 158° to cross TTONE at or above 8000, then on track 110° to cross VIVVS at or above 10000, then on track 095° to cross RASLR at or above 13000, thence. . . .

TAKEOFF RUNWAY 26L: Climb on heading 259° to 2682, then direct SILTT, then on track 253° to cross RUDYY at or above 4000 and at or below 230K, then on track 189° to cross SELZ at or below 8000, then on track 127° to cross TTONE at or above 8000, then on track 110° to cross VIVVS at or above 10000, then on track 095° to cross RASLR at or above 13000, thence. . . .

TAKEOFF RUNWAY 26R: Climb on heading 259° to intercept course 249° to cross RUDYY at or above 4000 and at or below 230K, then on track 189° to cross SELZ at or below 8000, then on track 127° to cross TTONE at or above 8000, then on track 110° to cross VIVVS at or above 10000, then on track 095° to cross RASLR at or above 13000, thence. . . .

. . . . on (transition). Maintain FL190. Expect filed altitude 10 minutes after departure.

ZAYNE TRANSITION (RASLR3.ZAYNE)

SW-4, 14 MAY 2026 to 11 JUN 2026

SW-4, 14 MAY 2026 to 11 JUN 2026