

RNAV 1 - DME/DME/IRU or GPS.  
RADAR required.

(PEHTY, RKSTR4) 24305

AL-662 (FAA)  
Transition Routes

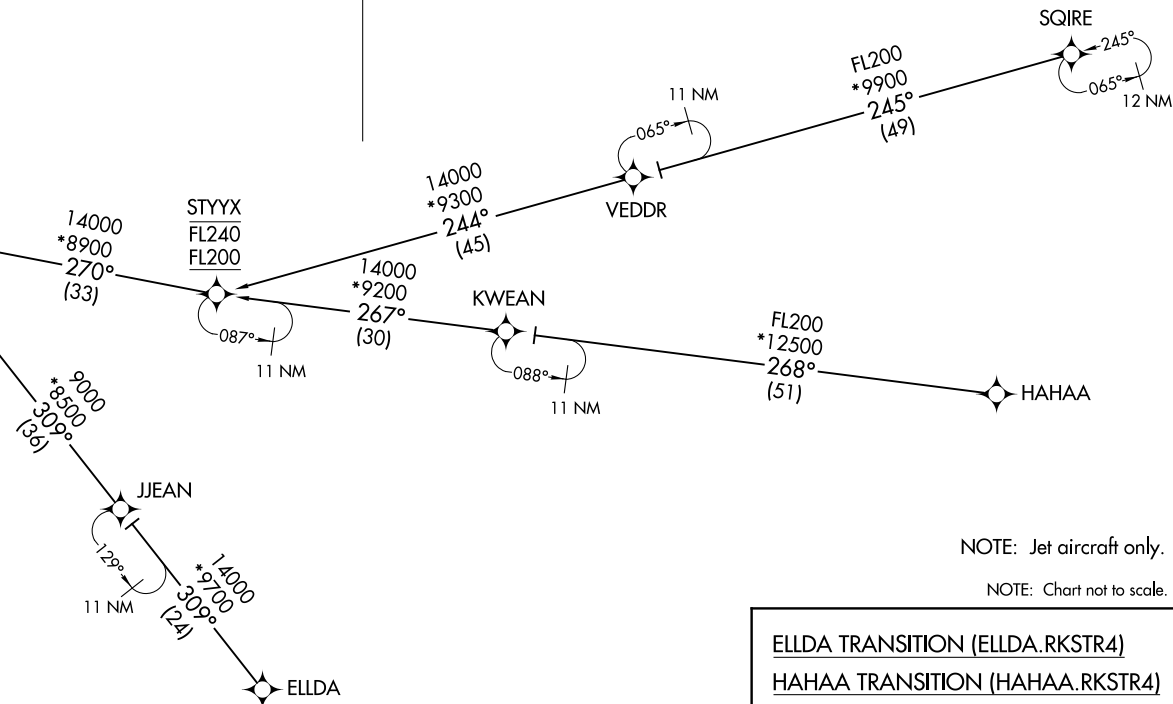
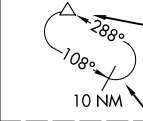
HARRY REID INTL (LAS)  
LAS VEGAS, NEVADA

LAS VEGAS APP CON  
119.775 282.2  
D-ATIS  
132.4  
LAS VEGAS TOWER  
118.75 257.8 (Rwys 1L/19R, 1R/19L)  
119.9 257.8 (Rwys 8L/26R, 8R/26L)



See following page  
for arrival routes.

PEHTY	
16000	250K
14000	



NOTE: Jet aircraft only.  
NOTE: Chart not to scale.

ELLDA TRANSITION (ELLDA.RKSTR4)  
HAHA TRANSITION (HAHA.RKSTR4)  
SQIRE TRANSITION (SQIRE.RKSTR4)

(CONTINUED ON FOLLOWING PAGE)

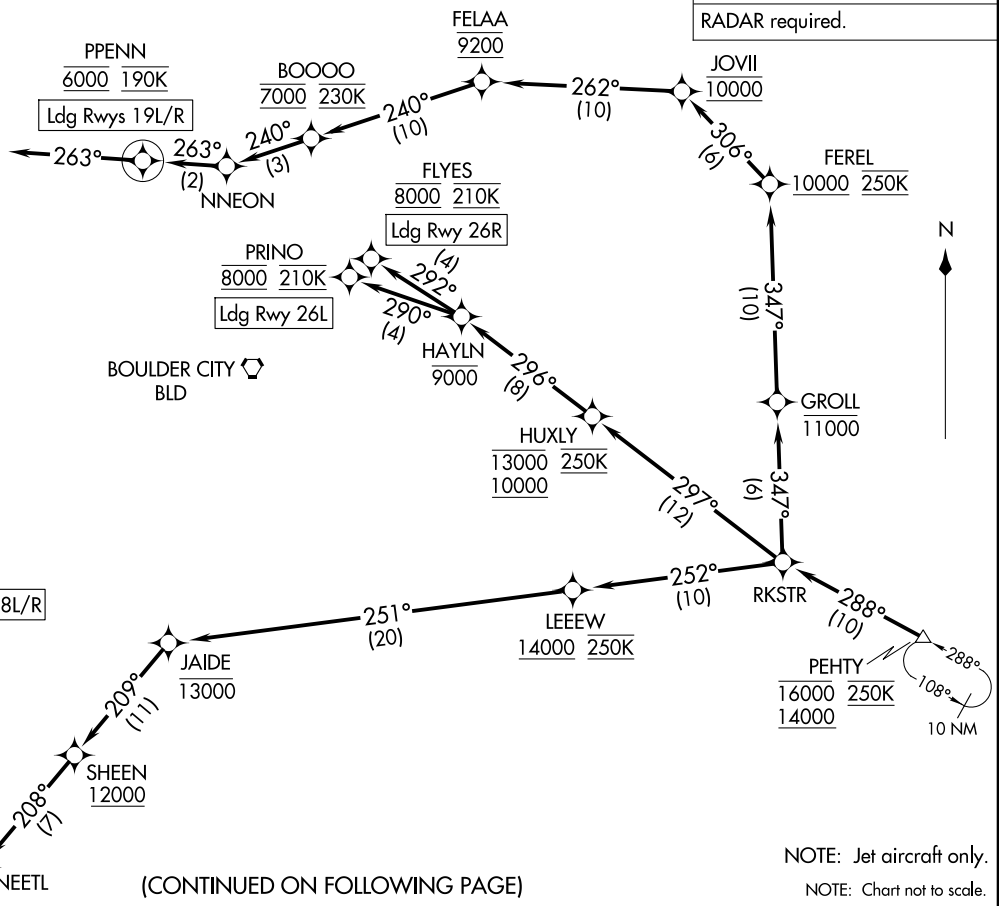
RKSTR FOUR ARRIVAL (RNAV)  
(PEHTY, RKSTR4) 31OCT24

Transition Routes

LAS VEGAS, NEVADA  
HARRY REID INTL (LAS)

RNAV 1 - DME/DME/IRU or GPS.  
RADAR required.

LAS VEGAS APP CON  
119.775 282.2  
D-ATIS  
132.4  
LAS VEGAS TOWER  
118.75 257.8 (Rwys 1L/19R, 1R/19L)  
119.9 257.8 (Rwys 8L/26R, 8R/26L)



RKSTR FOUR ARRIVAL (RNAV) Arrival Routes  
(PEHTY, RKSTR4) 310CTZ4  
LAS VEGAS, NEVADA  
HARRY REID INTL (LAS)

(PEHTY, RKSTR4) 24305  
RKSTR FOUR ARRIVAL (RNAV) Arrival Routes  
AL-662 (FAA)  
HARRY REID INTL (LAS)  
LAS VEGAS, NEVADA

(CONTINUED ON FOLLOWING PAGE)

NOTE: Jet aircraft only.  
NOTE: Chart not to scale.

# RKSTR FOUR ARRIVAL (RNAV)

## ARRIVAL ROUTE DESCRIPTION

From PEHTY on track 288° to RKSTR.

LANDING RUNWAYS 1L/R, 8L/R: From RKSTR on track 252° to cross LEEEW at or above 14000 and at 250K, then on track 251° to cross JAIDE at or below 13000, then on track 209° to cross SHEEN at or above 12000, then on track 208° to NEETL, then on track 259° to cross CAMMP at 10000 and at 210K, then on track 338° to cross BUGSS at 9000, then on track 001° to cross VANDL at 9000, then on track 001°. Expect RADAR vectors to final approach course.

LANDING RUNWAYS 19L/R: From RKSTR on track 347° to cross GROLL at or below 11000, then on track 347° to cross FEREL at or above 10000 and at 250K, then on track 306° to cross JOVII at 10000, then on track 262° to cross FELAA at 9200, then on track 240° to cross BOOOO at 7000 and at 230K, then on track 240° to NNEON, then on track 263° to cross PPENN at 6000 and at 190K, then on track 263°. Expect RADAR vectors to final approach course.

LANDING RUNWAY 26L: From RKSTR on track 297° to cross HUXLY between 10000 and 13000 and at 250K, then on track 296° to cross HAYLN at or below 9000, then on track 290° to cross PRINO at 8000 and at 210K. Expect ILS or LOC RWY 26L approach.

LANDING RUNWAY 26R: From RKSTR on track 297° to cross HUXLY between 10000 and 13000 and at 250K, then on track 296° to cross HAYLN at or below 9000, then on track 292° to cross FLYES at 8000 and at 210K. Expect ILS or LOC RWY 26R approach.

### LOST COMMUNICATIONS

LANDING RUNWAYS 1L/R, 8L/R: At VANDL proceed on the RNAV (GPS) RWY 1R approach, if unable maintain 8100 direct BLD VORTAC and then on the ILS or LOC RWY 26L approach.

LANDING RUNWAY 19L: At PPENN proceed on the RNAV (RNP) RWY 19L approach, if unable, proceed via last track to intercept the final approach course; if unable, maintain 7000 direct LAS VORTAC then direct BLD VORTAC and then on the ILS or LOC RWY 26L approach.

SW-4, 14 MAY 2026 to 11 JUN 2026

SW-4, 14 MAY 2026 to 11 JUN 2026