

LOC/DME HLGU <b>109.15</b> Chan <b>28(Y)</b>	APP CRS <b>172°</b>	Rwy Ldg <b>9020</b> TDZE <b>4457</b> Apt Elev <b>4457</b>
--	------------------------	---

# ILS or LOC/DME RWY 17

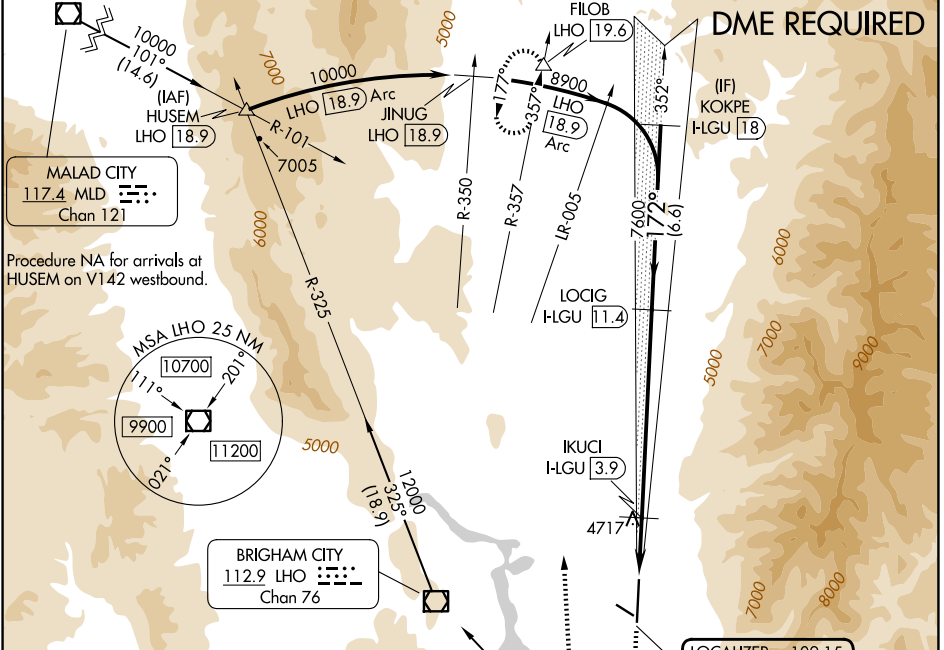
LOGAN-CACHE (LGU)

**NA** Circling NA east of Rwy 17-35.  
**NA** Circling Rwy 10, 28 NA at night.  
**-14°C** Rwy 17 helicopter visibility reduction below 3/4 SM NA.

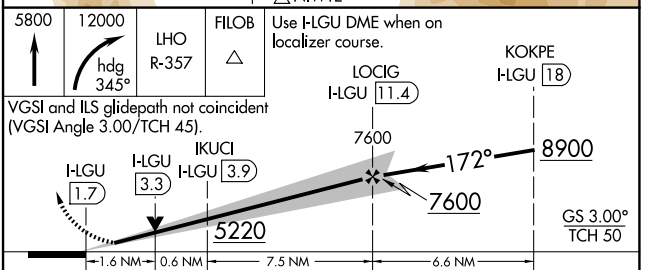
**MALS**

**MISSED APPROACH:** Climb to 5800 then climbing right turn to 12000 on heading 345° and on LHO VOR/DME R-357 to FIOB INT/LHO 19.6 DME and hold, continue climb-in-hold to 12000.

ASOS <b>135.275</b>	SALT LAKE CENTER <b>127.7 354.125</b>	UNICOM <b>122.8 (CTAF)</b>
------------------------	--	-------------------------------



ELEV 4457	<b>D</b> TDZE 4457
172°	



CATEGORY	A	B	C	D
S-ILS 17	4771-3/4		314 (400-3/4)	
S-LOC 17	5020-3/4	563 (600-3/4)	5020-1/4	563 (600-1/4)
CIRCLING	5020-1	563 (600-1)	5080-1 3/4 623 (700-1 3/4)	5080-2 623 (700-2)

SW-4, 14 MAY 2026 to 11 JUN 2026

SW-4, 14 MAY 2026 to 11 JUN 2026