

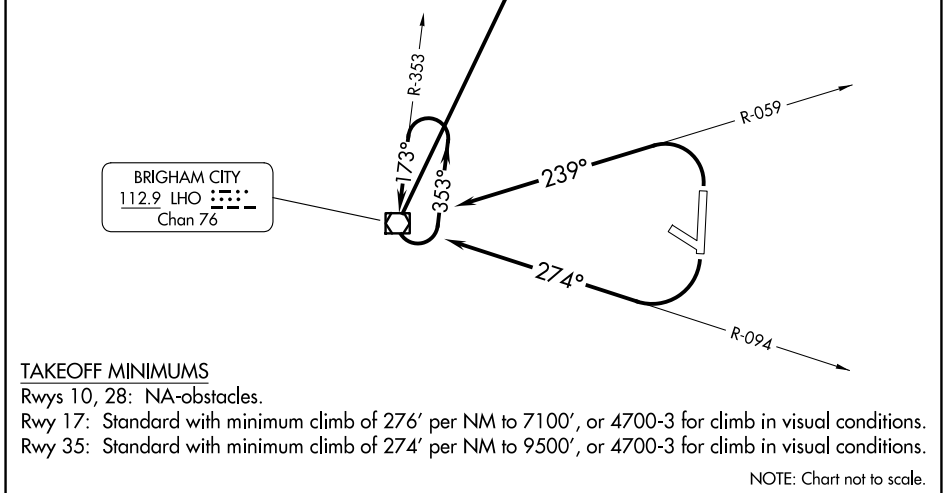
SALT LAKE CENTER
127.7 354.125

MALAD CITY
117.4 MLD
Chan 121

TAKEOFF OBSTACLE NOTES

- Rwy 17: Railroad, poles and tree beginning 336' from DER, 220' left of centerline, up to 45' AGL/4495' MSL.
- Rwy 35: Railroad beginning 205' from DER, 554' right of centerline, up to 23' AGL/4490' MSL.

BRIGHAM CITY
112.9 LHO
Chan 76



TAKEOFF MINIMUMS

- Rwys 10, 28: NA-obstacles.
- Rwy 17: Standard with minimum climb of 276' per NM to 7100', or 4700-3 for climb in visual conditions.
- Rwy 35: Standard with minimum climb of 274' per NM to 9500', or 4700-3 for climb in visual conditions.

NOTE: Chart not to scale.

DEPARTURE ROUTE DESCRIPTION

TAKEOFF RUNWAY 17: Climbing right turn to 12000 via LHO VOR/DME R-094 to LHO VOR/DME and right turn via LHO R-012 to ORNEY INT/LHO 12 DME and left turn via LHO R-012 to LHO VOR/DME, thence . . . or for climb in visual conditions, cross Logan-Cache Airport at or above 9000, climb to 12000 via LHO R-077 to LHO VOR/DME, thence . . .

TAKEOFF RUNWAY 35: Climbing left turn to 12000 via LHO VOR/DME R-059 to LHO VOR/DME and right turn via LHO R-012 to ORNEY INT/LHO 12 DME and left turn via LHO R-012 to LHO VOR/DME, thence . . . or for climb in visual conditions, cross Logan-Cache Airport at or above 9000, climb to 12000 via LHO R-077 to LHO VOR/DME, thence . . .

. . . continue climbing in LHO VOR/DME holding pattern to 12000 before proceeding on course.

SW-4, 14 MAY 2026 to 11 JUN 2026

SW-4, 14 MAY 2026 to 11 JUN 2026