

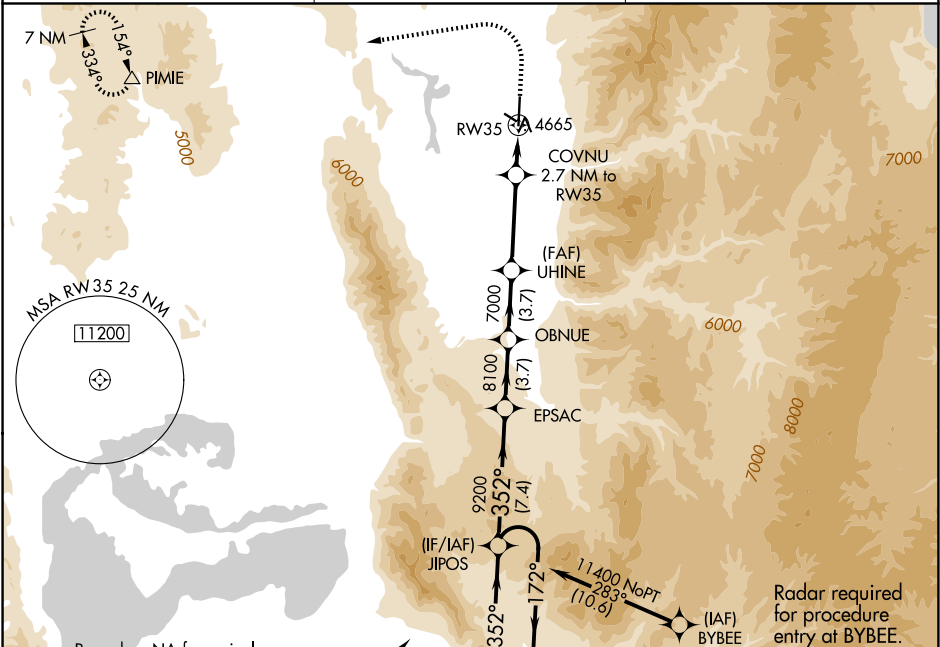
WAAS CH <b>57900</b> <b>W35A</b>	APP CRS <b>352°</b>	Rwy Ldg TDZE <b>4457</b> Apt Elev <b>4457</b>
--	------------------------	---

# RNAV (GPS) RWY 35

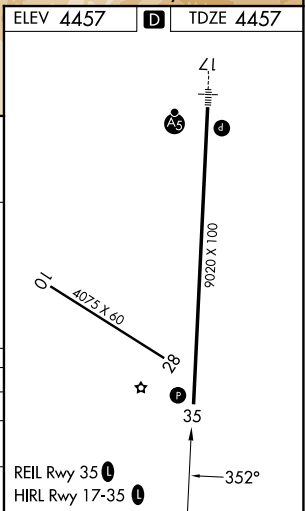
LOGAN-CACHE (LGU)

RNP APCH - GPS.	MISSED APPROACH: Climb to 4900 then climbing left turn to 10000 direct PIMIE and hold, continue climb-in-hold to 10000.
-14°C	Circling NA east of Rwy 17-35. Circling Rwy 10, 28 NA at night.

ASOS <b>135.275</b>	SALT LAKE CENTER <b>127.7 354.125</b>	UNICOM <b>122.8 (CTAF) 0</b>
------------------------	--	---------------------------------



7 NM Holding Pattern	VGSI and RNAV glidepath not coincident (VGSI Angle 3.00/TCH 39).	4900	10000	PIMIE		
GP 3.00° TCH 45	7.4 NM	3.7 NM	3.7 NM	5.1 NM	1.4	1.3
7 NM	7 NM	7 NM	7 NM	7 NM	7 NM	7 NM
7 NM	7 NM	7 NM	7 NM	7 NM	7 NM	7 NM



SW-4, 14 MAY 2026 to 11 JUN 2026

SW-4, 14 MAY 2026 to 11 JUN 2026