

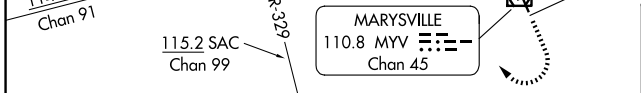
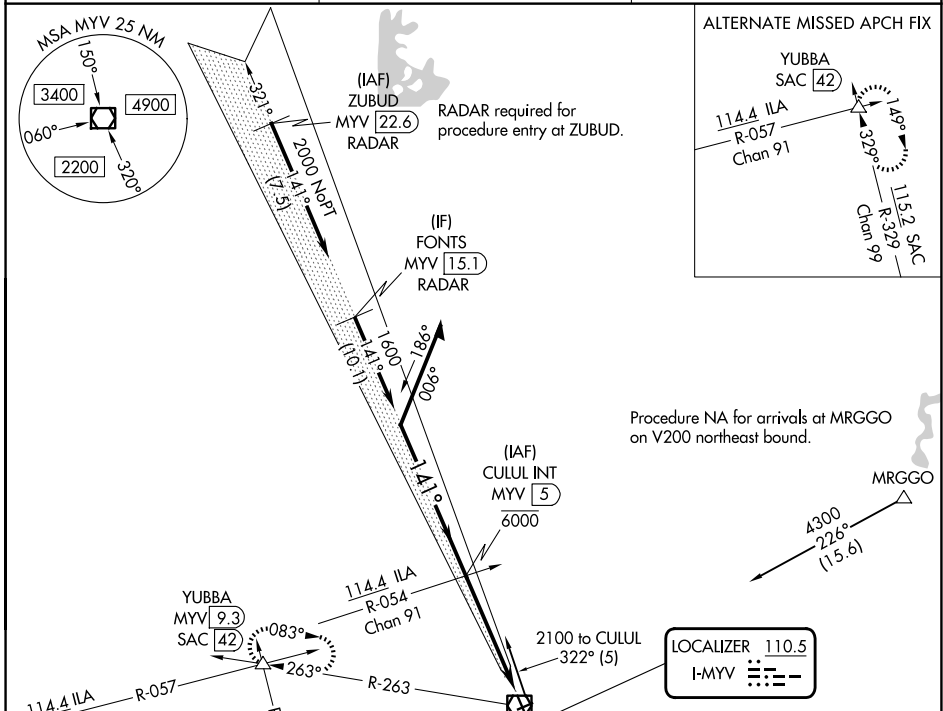
LOC I-MYV <b>110.5</b>	APP CRS <b>141°</b>	Rwy Ldg <b>6007</b> TDZE <b>64</b> Apt Elev <b>64</b>
---------------------------	------------------------	---

# ILS or LOC RWY 14

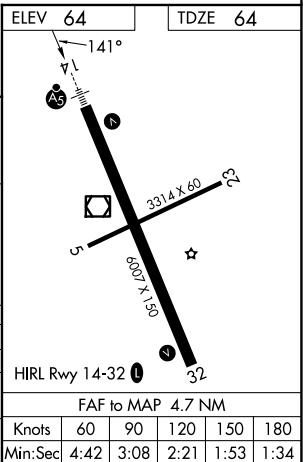
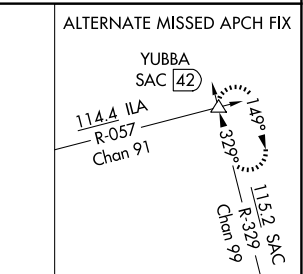
YUBA COUNTY (MYV)

<p><b>NA</b> Circling Rwy 5, 23 NA at night. Autopilot coupled approach NA below 695.</p>	<p>MALSR</p>	<p>MISSED APPROACH: Climb to 1000 then climbing right turn to 4000 on MYV VOR/DME R-263 to YUBBA INT/ MYV 9.3 DME and hold, continue climb in hold to 4000.</p>
---	--------------	---

ASOS <b>118.475</b>	NORCAL APP CON <b>125.4 259.1</b>	UNICOM <b>123.05 (CTAF)</b>
------------------------	--------------------------------------	--------------------------------



CATEGORY	A	B	C	D
S-ILS 14	264-1/2 200 (200-1/2)			
S-LOC 14	520-1/2	456 (500-1/2)	520-7/8	456 (500-7/8)
CIRCLING	540-1	476 (500-1)	560-1 1/2	620-2
			496 (500-1 1/2)	556 (600-2)



SW-2, 14 MAY 2026 to 11 JUN 2026

SW-2, 14 MAY 2026 to 11 JUN 2026