

WAAS CH 87014 W32A	APP CRS 321°	Rwy Ldg 6007 TDZE 63 Apt Elev 64
--	------------------------	---

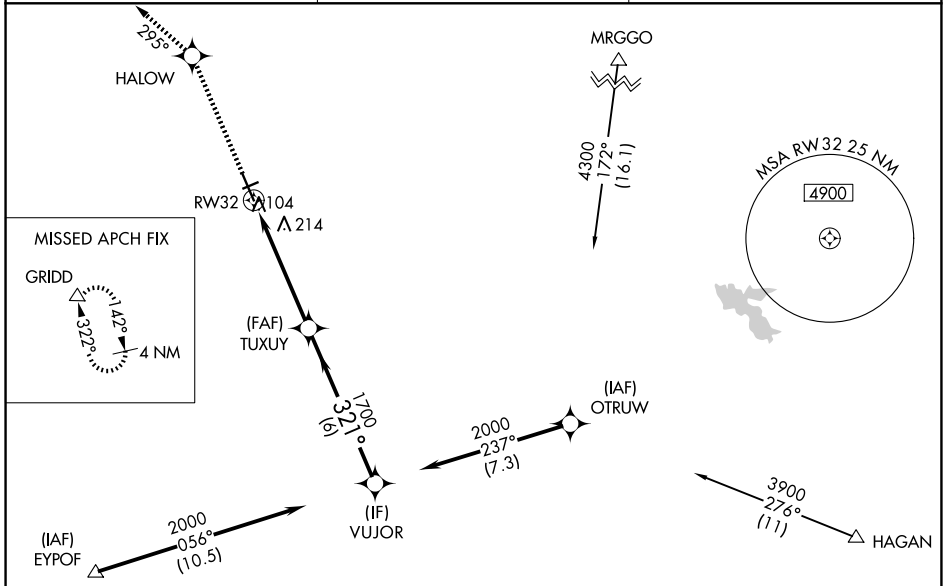
RNAV (GPS) RWY 32

YUBA COUNTY (MYV)

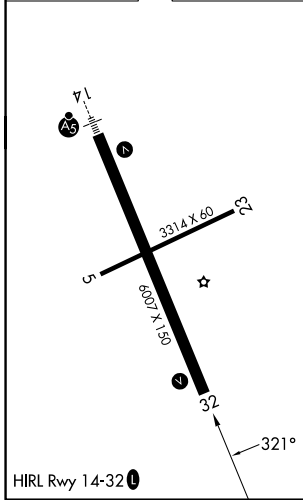
⚠ For uncompensated Baro-VNAV systems, LNAV/VNAV NA below -1.5°C (5°F) or above 54°C (130°F). DME/DME RNP-0.3 NA. When local altimeter setting not received, use Lincoln altimeter setting and increase LPV DA to 357 feet, LNAV/VNAV DA to 418 feet and all MDA 60 feet; increase LPV and LNAV/VNAV all Cats visibility 1/8 mile, LNAV Cats C/D visibility 1/4 mile. Night landing: Rwy 5, 23 NA. Baro-VNAV and VDP NA when using Lincoln altimeter setting.

⚠ MISSED APPROACH: Climb to 4000 direct HALOW and via track 295° to GRIDD and hold.

ASOS 118.475	NORCAL APP CON 125.4 259.1	UNICOM 123.05 (CTAF) 0
------------------------	--------------------------------------	----------------------------------



ELEV 64	TDZE 63
----------------	----------------



4000	HALOW	tr 295°	GRIDD	*LNAV only	VUJOR	Procedure Turn NA
↑	✧		△		2000	
*1.2 NM to RWY 32		TUXUY		321°		GP 3.00°
1.2 NM		3.8 NM		6 NM		TCH 32
CATEGORY	A		B		C	D
LPV DA	313-7/8		250 (300-7/8)			
LNAV/VNAV DA	374-1 1/8		311 (400-1 1/8)			
LNAV MDA	480-1 417 (500-1)		480-1 1/8 417 (500-1 1/8)			
CIRCLING	540-1 476 (500-1)		540-1 1/2 476 (500-1 1/2)		620-2	556 (600-2)

SW-2, 14 MAY 2026 to 11 JUN 2026

SW-2, 14 MAY 2026 to 11 JUN 2026