

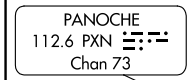
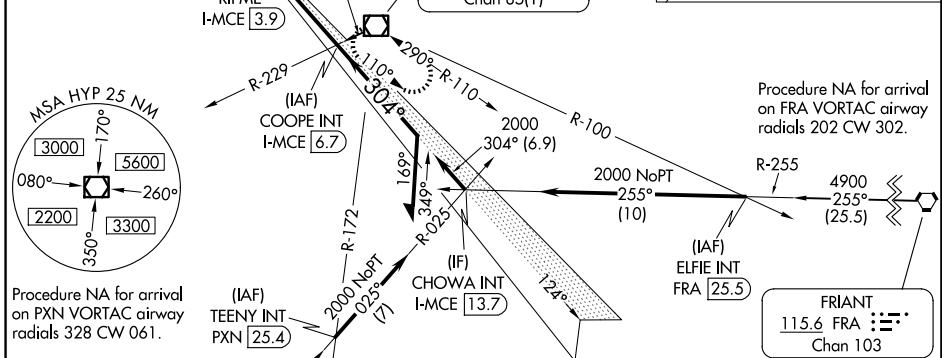
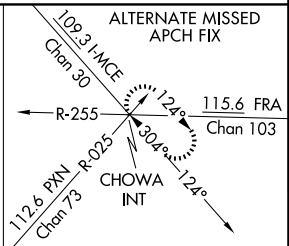
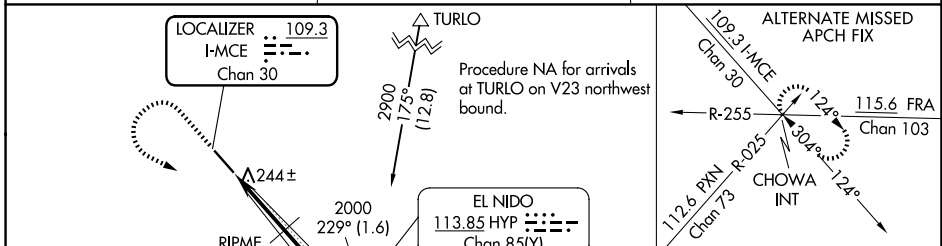
LOC/DME I-MCE <b>109.3</b> Chan 30	APP CRS <b>304°</b>	Rwy Ldg TDZE Apt Elev	<b>5914</b> <b>155</b> <b>155</b>
--	------------------------	-----------------------------	---

# ILS or LOC RWY 30

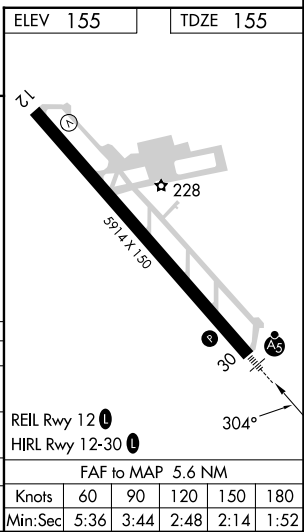
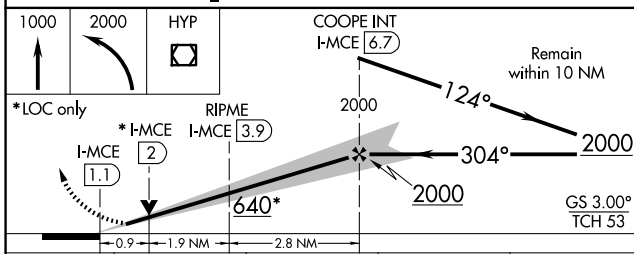
MERCED YOSEMITE RGNL (MCE)

<p><b>NA</b> For inop ALS, increase S-LOC visibility to 1 SM.</p>	<p>MALSRL</p>	<p>MISSED APPROACH: Climb to 1000 then climbing left turn to 2000 direct HYP VOR/DME and hold.</p>
---	---------------	--

ASOS <b>132.175</b>	NORCAL APP CON <b>120.95 269.45</b>	UNICOM <b>122.7 (CTAF)</b>
------------------------	--	-------------------------------



ELEV 155	TDZE 155
----------	----------



CATEGORY	A	B	C	D
S-ILS 30		355-½	200 (200-½)	
S-LOC 30	640-¾	485 (500-¾)	640-1	485 (500-1)
RIPME FIX MINIMUMS				
S-LOC 30		500-¾	345 (400-¾)	

Knots	60	90	120	150	180
Min:Sec	5:36	3:44	2:48	2:14	1:52

SW-2, 14 MAY 2026 to 11 JUN 2026

SW-2, 14 MAY 2026 to 11 JUN 2026