

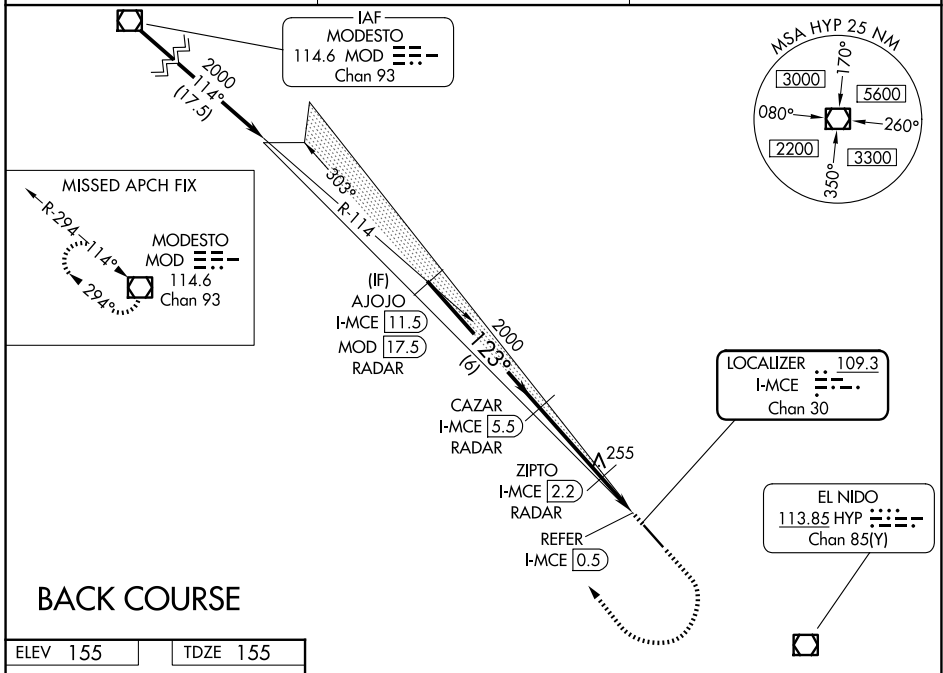
LOC/DME I-MCE 109.3 Chan 30	APP CRS 123°	Rwy Ldg 5914 TDZE 155 Apt Elev 155
--	------------------------	---

LOC BC RWY 12

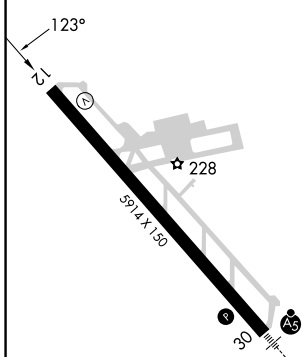
MERCED YOSEMITE RGNL (MCE)

DME or RADAR required.	MISSED APPROACH: Climb to 1000 then climbing right turn to 3000 direct MOD VOR/DME and hold.
<p>▼ Rwy 12 helicopter visibility reduction below 3/4 SM NA.</p> <p>▲ NA Circling NA northeast of Rwy 12-30.</p>	

ASOS 132.175	NORCAL APP CON 120.95 269.45	UNICOM 122.7 (CTAF) 0
------------------------	--	---------------------------------



ELEV 155	TDZE 155
----------	----------

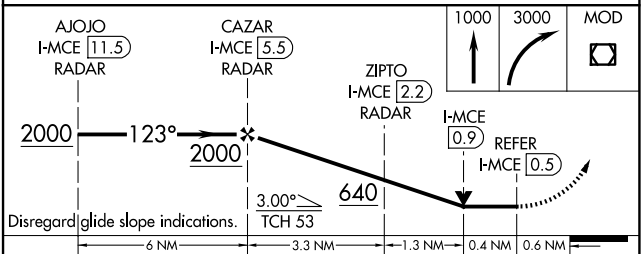


REIL Rwy 12 0

HIRL Rwy 12-30 0

FAF to MAP 5 NM

Knots	60	90	120	150	180
Min:Sec	5:00	3:20	2:30	2:00	1:40



CATEGORY	A	B	C	D
S-12	640-1	485 (500-1)	640-1 3/8	485 (500-1 3/8)
CIRCLING	640-1	485 (500-1)	640-1 1/2	720-2 485 (500-1 1/2) 565 (600-2)
ZIPTO FIX MINIMUMS				
S-12	520-1 365 (400-1)	NA		
CIRCLING	560-1 405 (500-1)	620-1 465 (500-1)	620-1 1/2 465 (500-1 1/2)	720-2 565 (600-2)

SW-2, 14 MAY 2026 to 11 JUN 2026

SW-2, 14 MAY 2026 to 11 JUN 2026