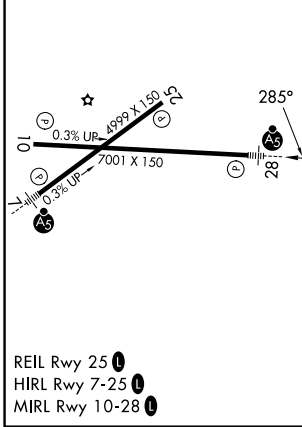
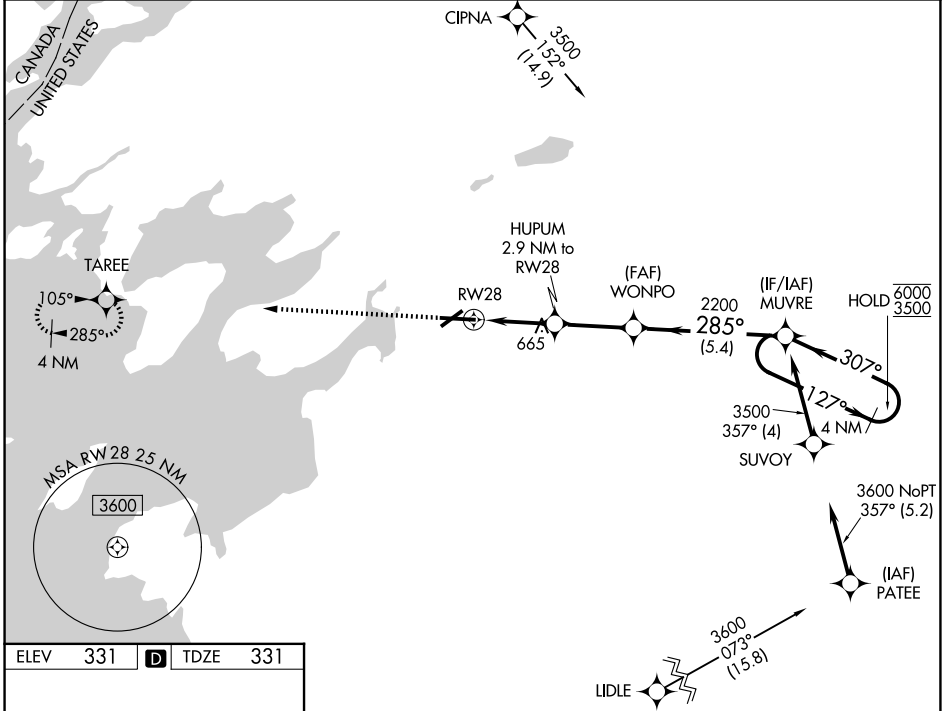


WAAS CH 82322 W28A	APP CRS 285°	Rwy Ldg TDZE 7001 331	Apt Elev 331
----------------------------------------	------------------------	-------------------------------------------	------------------------

RNAV (GPS) RWY 28

WATERTOWN INTL (ART)

RNP APCH - GPS.				MALS R	MISSED APPROACH: Climb to 2400 direct TAREE and hold.
<p>▼ Rwy 28 helicopter visibility reduction below 3/4 SM NA. For uncompensated Baro-VNAV systems, LNAV/VNAV NA below -20°C or above 54°C. For inop ALS, increase LNAV Cats A/B visibility to 1 SM.</p>					
ASOS 132.325	KGTB ATIS 119.525	WHEELER-SACK APP CON 124.875 307.125	CLNC DEL 120.8	UNICOM 123.0 (CTAF)	



2400	TAREE	WONPO	MUVRE	4 NM Holding Pattern
	HUPUM 2.9 NM to RWY 28	2200	127° → 6000	307° ← 3500
	1.7 NM to RWY 28	1300	285°	GP 3.00° TCH 45
	1.7	1.2	2.8 NM	5.4 NM
CATEGORY	A	B	C	D
LPV DA		531-1/2	200 (200-1/2)	
LNAV/VNAV DA		852-1	521 (600-1)	
LNAV MDA	920-3/4	589 (600-3/4)	920-1/4	589 (600-1/4)
CIRCLING	920-1 589 (600-1)	960-1 629 (700-1)	980-1/4 649 (700-1/4)	1080-2/2 749 (800-2/2)

NE-2, 14 MAY 2026 to 11 JUN 2026

NE-2, 14 MAY 2026 to 11 JUN 2026