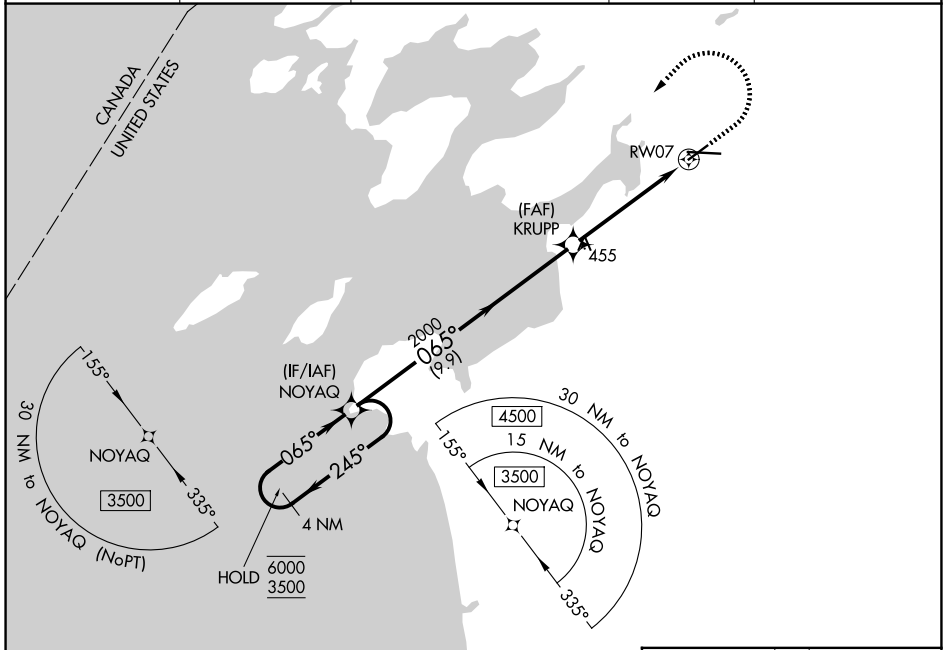


WAAS CH 82510 W07A	APP CRS 065°	Rwy Ldg TDZE Apt Elev	4784 319 331
--	------------------------	-----------------------------	---

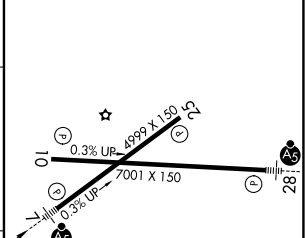
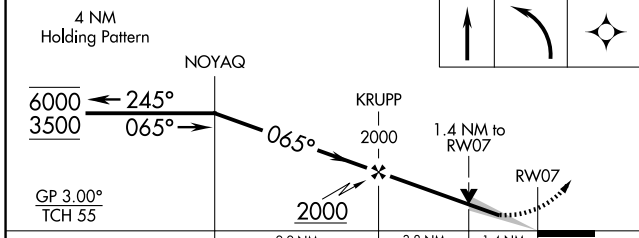
RNAV (GPS) RWY 7

WATERTOWN INTL (ART)

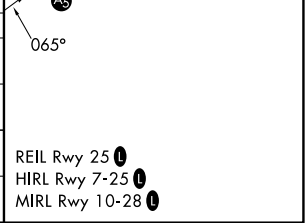
RNP APCH - GPS.		MALSR		MISSED APPROACH: Climb to 900 then climbing left turn to 3500 direct NOYAQ and hold.	
<p>▽ For uncompensated Baro-VNAV systems, LNAV/VNAV NA below -20°C or above 54°C. For inop ALS, increase LNAV/VNAV visibilities all Cats to 1½ SM and LNAV Cat C/D visibilities to 1½ SM.</p>					
ASOS 132.325	KGTB ATIS 119.525	WHEELER-SACK APP CON 124.875 307.125		CLNC DEL 120.8	UNICOM 123.0 (CTAF)



ELEV	331	D	TDZE	319
------	-----	----------	------	-----



CATEGORY	A	B	C	D
LPV DA		519-½	200 (200-½)	
LNAV/VNAV DA		800-1	481 (500-1)	
LNAV MDA	800-½	481 (500-½)	800-1	481 (500-1)
CIRCLING	960-1	629 (700-1)	980-¾ 649 (700-¾)	1080-2½ 749 (800-2½)



NE-2, 14 MAY 2026 to 11 JUN 2026

NE-2, 14 MAY 2026 to 11 JUN 2026