

VORTAC ART 109.8 Chan 35	APP CRS 043°	Rwy Ldg TDZE 319 Apt Elev 331
--	------------------------	---

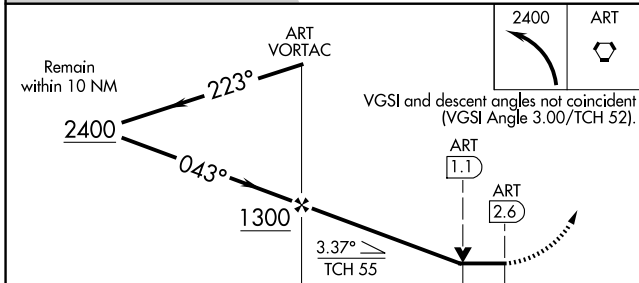
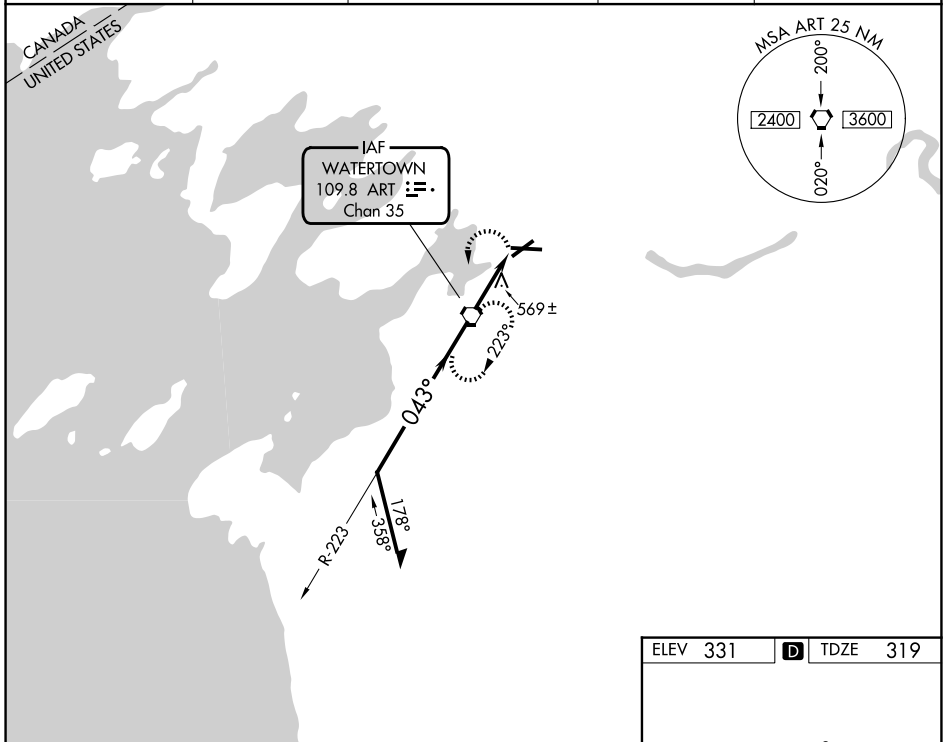
VOR RWY 7

WATERTOWN INTL (ART)

⚠ Inop table does not apply. When local altimeter setting not received, use Fort Drum altimeter setting and increase all MDAs 100 feet and visibility S-7 Cat C/D and Circling Cat D ¼ SM and Circling Cat C ½ SM. VDP NA when using Fort Drum altimeter setting.

MALSR MISSED APPROACH: Climbing left turn to 2400 direct ART VORTAC and hold, continue climb-in-hold to 2400.

ASOS 132.325	KGTB ATIS 119.525	WHEELER-SACK APP CON 124.875 307.125	CLNC DEL 120.8	UNICOM 123.0 (CTAF)
------------------------	-----------------------------	--	--------------------------	-------------------------------



ELEV 331	D TDZE 319
----------	-------------------

REIL Rwy 25 **Ⓛ**
HIRL Rwy 7-25 **Ⓛ**
MIRL Rwy 10-28 **Ⓛ**

FAF to MAP 2.6 NM

Knots	60	90	120	150	180
Min:Sec	2:36	1:44	1:18	1:02	0:52

CATEGORY	A	B	C	D
S-7	880-1 561 (600-1)		880-1½ 561 (600-1½)	
CIRCLING	960-1 629 (700-1)		980-1¾ 649 (700-1¾)	1080-2½ 749 (800-2½)

NE-2, 14 MAY 2026 to 11 JUN 2026

NE-2, 14 MAY 2026 to 11 JUN 2026