

| | | |
|---|------------------------|---|
| VOR/DME EWN 113.6 Chan 83 | APP CRS 226° | Rwy Ldg 6153 TDZE 17 Apt Elev 18 |
|---|------------------------|---|

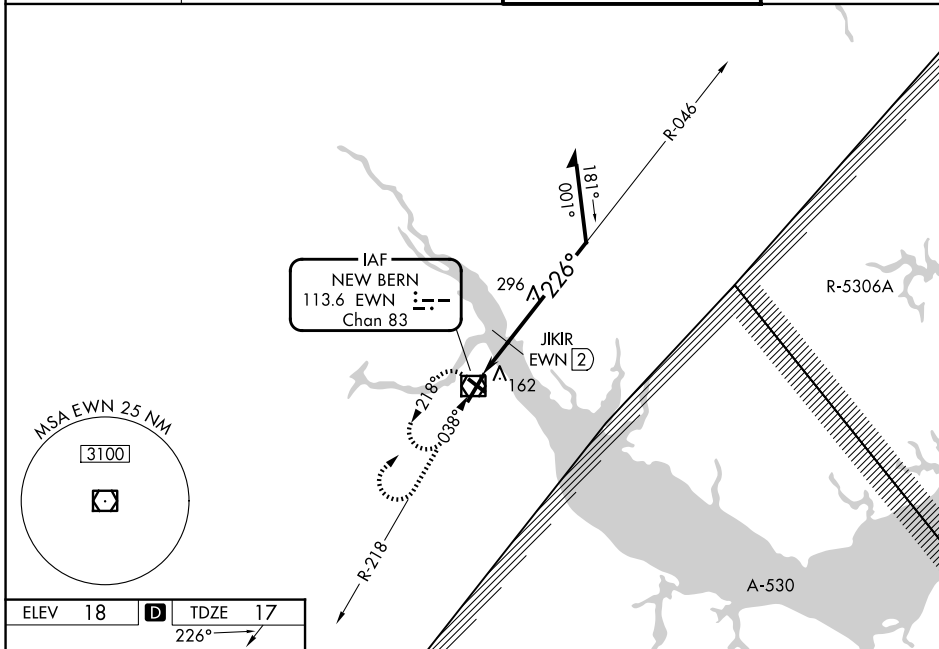
VOR RWY 22

COASTAL CAROLINA RGNL (EWN)

- ▼ Rwy 14, 32 helicopter visibility reduction below 1 SM NA. Rwy 22 helicopter visibility reduction below ¾ SM NA. Circling Rwy 14, 32 NA at night. JIKIR fix minimums:
- ▲ S-22 Cat D minimums NA when using Cherry Point altimeter setting. When local altimeter setting not received, use Cherry Point altimeter setting and increase all MDAs 40 feet and Circling Cat D visibility ¼ SM and JIKIR fix minimums Circling Cat C/D visibility ¼ SM.

MISSED APPROACH: Climb to 1000 then climbing right turn to 2000 direct EWN VOR/ DME and hold, continue climb-in-hold to 2000.

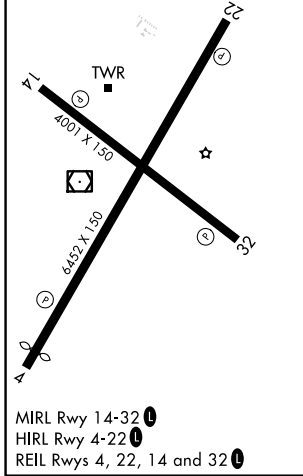
| | | | |
|------------------------|---|--|-------------------------|
| ASOS 118.525 | CHERRY POINT APP CON 119.35 377.175 | NEW BERN TOWER ★ 124.25 (CTAF) 0 | GND CON 121.7 |
|------------------------|---|--|-------------------------|



SE-2, 14 MAY 2026 to 11 JUN 2026

SE-2, 14 MAY 2026 to 11 JUN 2026

| | | |
|----------------|----------|----------------|
| ELEV 18 | D | TDZE 17 |
|----------------|----------|----------------|



| | | | | |
|------|------|-----|-------------|---------------------|
| 1000 | 2000 | EWN | EWN VOR/DME | Remain within 10 NM |
| ↑ | ↷ | ☐ | 6000 | |

VGSI and descent angles not coincident (VGSI Angle 3.00/TCH 31).

*640 when using Cherry Point altimeter setting.

| CATEGORY | A | B | C | D |
|-----------------------------------|----------------------|----------------------|------------------------|------------------------|
| S-22 | 600-1 | 583 (600-1) | 600-1¾ | 583 (600-1¾) |
| CIRCLING | 600-1 | 582 (600-1) | 600-1¾ 582 (600-1¾) | 860-2¾ 842 (900-2¾) |
| JIKIR FIX MINIMUMS (DME REQUIRED) | | | | |
| S-22 | 480-1 | 463 (500-1) | 480-1⅜ | 463 (500-1⅜) |
| CIRCLING | 480-1 462 (500-1) | 520-1 502 (600-1) | 600-1½ 582 (600-1½) | 860-2¾ 842 (900-2¾) |