

WAAS CH 87118 W01A	APP CRS 012°	Rwy Ldg 5000 TDZE 324 Apt Elev 328
---------------------------------	------------------------	---

RNAV (GPS) RWY 1

FLOYD BENNETT MEML (GFL)

⚠ For uncompensated Baro-VNAV systems, LNAV/VNAV NA below -18°C (0°F) or above 54°C (130°F). DME/DME RNP-0.3 NA. When local altimeter setting not received use Albany altimeter setting and increase all DA 91 feet and all MDA 100 feet; increase LNAV/VNAV all Cats ¾ SM, LNAV Cat C/D and Circling Cat C visibility ¼ SM. For inoperative ALS when using Albany altimeter setting, increase LPV all Cats visibility to ¾ SM. Baro-VNAV and VDP NA when using Albany altimeter setting. Circling Rwy 12, 30 NA at night. Rwy 12, 30 helicopter visibility reduction below 1 SM NA.

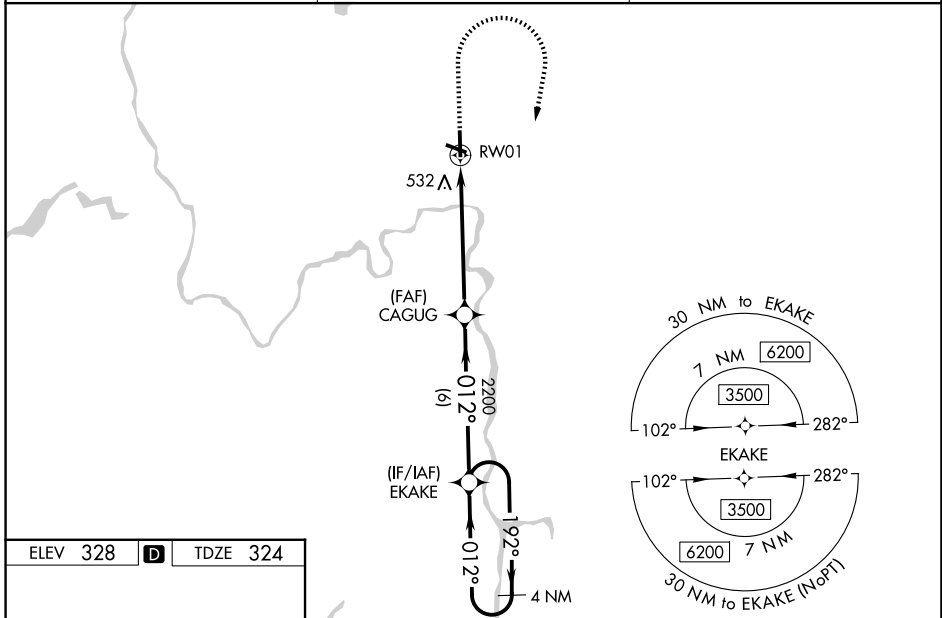
MALSR



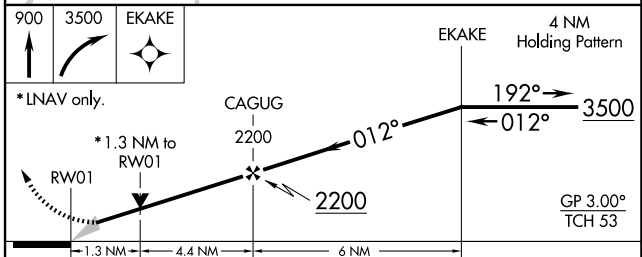
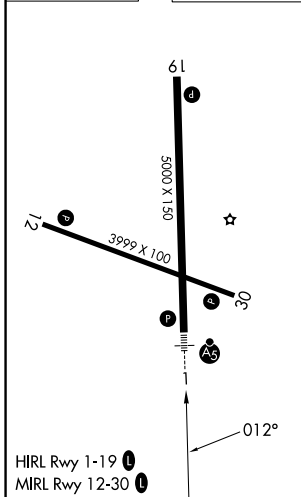
MISSED APPROACH:
Climb to 900 then climbing right turn to 3500 direct EKAKE and hold.

❄ -18°C

ASOS 119.925	ALBANY APP CON 132.825 307.2	UNICOM 123.0 (CTAF) 0
------------------------	--	---------------------------------



ELEV 328	D	TDZE 324
----------	----------	----------



CATEGORY	A	B	C	D
LPV DA		524-½	200 (200-½)	
LNAV/VNAV DA		835-1¼	511 (600-1¼)	
LNAV MDA	800-½	476 (500-½)	800-1	476 (500-1)
CIRCLING	840-1 512 (600-1)	860-1 532 (600-1)	940-1¾ 612 (700-1¾)	1960-3 1632 (1700-3)

NE-2, 14 MAY 2026 to 11 JUN 2026

NE-2, 14 MAY 2026 to 11 JUN 2026