

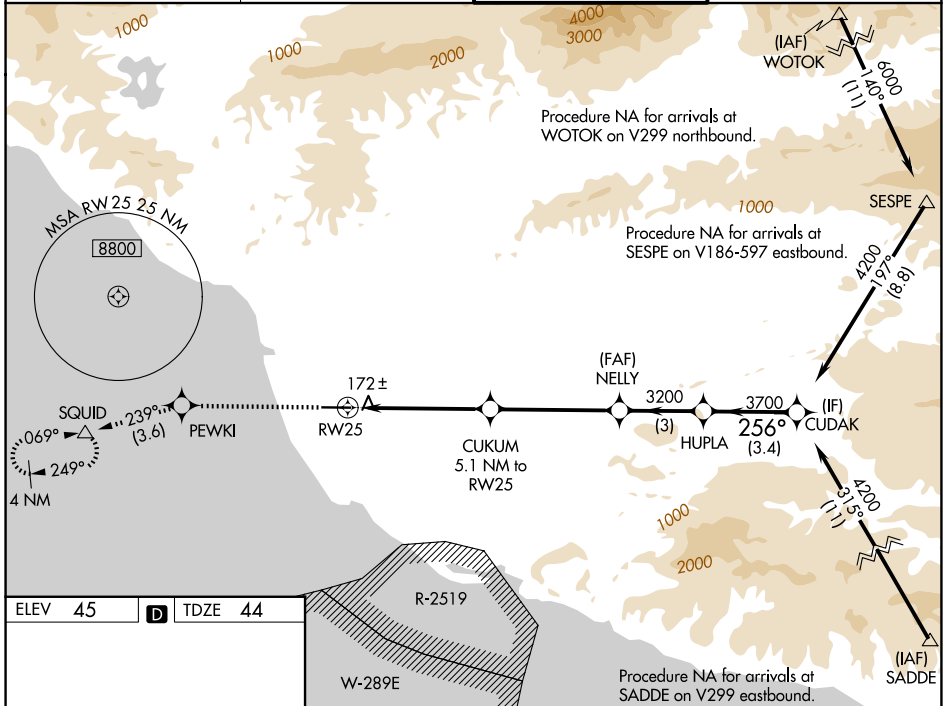
WAAS CH 86299 W25A	APP CRS 256°	Rwy Ldg 5500 TDZE 44 Apt Elev 45
--	------------------------	---

RNAV (GPS) RWY 25

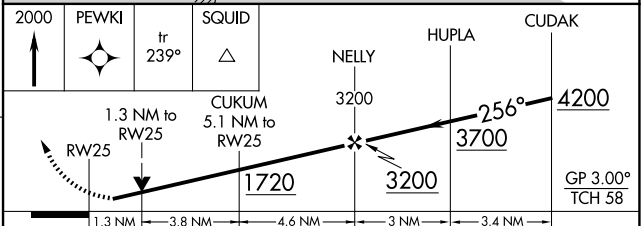
OXNARD (OXR)

RNP APCH - GPS.	MALSF	MISSED APPROACH: Climb to 2000 direct PEWKI and on track 239° to SQUID and hold.
<p>⚠ Inoperative table does not apply. Baro-VNAV NA when using Camarillo altimeter setting. For uncompensated Baro-VNAV systems, LNAV/VNAV NA below -1.5°C or above 43°C. When local altimeter setting not received, use Camarillo altimeter setting and increase LPV DA to 440 feet, LNAV/VNAV DA to 437 feet. Increase all MDAs 20 feet and Circling Cat C visibility ¼ SM.</p>		

ATIS 118.05	POINT MUGU APP CON* 124.7 335.5	OXNARD TOWER* 134.95 (CTAF) 257.8	GND CON 121.9
-----------------------	---	---	-------------------------



ELEV 45	D	TDZE 44
<p>REIL Rwy 7 ⓪ MIRL Rwy 7-25 ⓪</p>		



CATEGORY	A	B	C	D
LPV DA	424-1 380 (400-1)			
LNAV/VNAV DA	421-1 377 (400-1)			
LNAV MDA	520-1 476 (500-1)	520-1 ³ / ₈ 476 (500-1 ³ / ₈)		
CIRCLING	520-1 475 (500-1)	700-1 ³ / ₄ 655 (700-1 ³ / ₄)	760-2 ¹ / ₄ 715 (800-2 ¹ / ₄)	

SW-3, 14 MAY 2026 to 11 JUN 2026

SW-3, 14 MAY 2026 to 11 JUN 2026