

WAAS CH <b>73040</b> <b>W02A</b>	APP CRS <b>024°</b>	Rwy Ldg TDZE <b>4650</b> <b>2596</b> Apt Elev <b>2596</b>
----------------------------------------	------------------------	--------------------------------------------------------------------

# RNAV (GPS) RWY 2

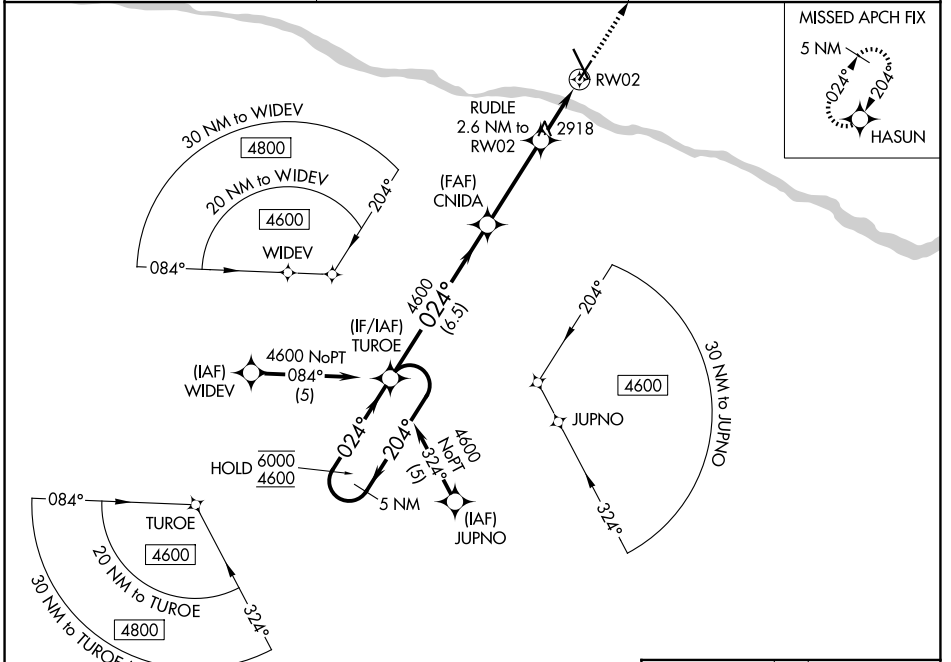
DODGE CITY RGNL (DDC)

RNP APCH - GPS.

**⚠** Rwy 2 helicopter visibility reduction below 3/4 SM NA. For uncompensated Baro-VNAV systems, LNAV/VNAV NA below -9°C or above 54°C.

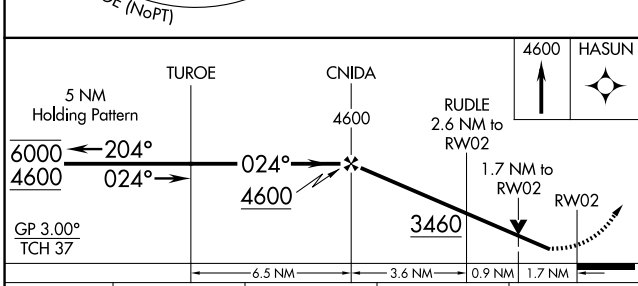
MISSED APPROACH: Climb to 4600 direct HASUN and hold.

ASOS <b>118.525</b>	KANSAS CITY CENTER <b>125.2 285.425</b>	UNICOM <b>122.7 (CTAF) 0</b>
------------------------	--------------------------------------------	---------------------------------



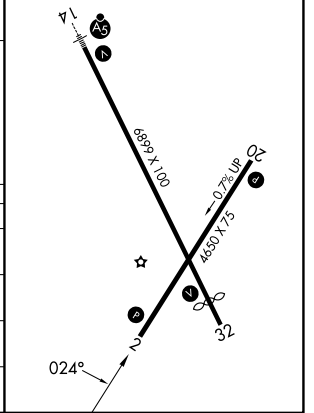
NC-2, 14 MAY 2026 to 11 JUN 2026

NC-2, 14 MAY 2026 to 11 JUN 2026



ELEV 2596 **D** TDZE 2596

REIL Rwy 32 **L**  
MIRL Rwy 14-32 and 2-20 **L**



CATEGORY	A	B	C	D
LPV DA	2846-1 250 (300-1)			NA
LNAV/VNAV DA	2883-1 287 (300-1)			NA
LNAV MDA	3180-1 584 (600-1)		3180-1 5/4 584 (600-1 3/4)	NA
CIRCLING	3180-1 584 (600-1)		3320-2 724 (800-2)	NA