

WAAS CH 53320 W09A	APP CRS 092°	Rwy Ldg TDZE 34 Apt Elev 48
--	------------------------	---

RNAV (GPS) RWY 9

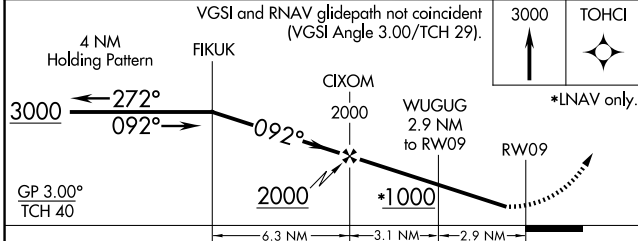
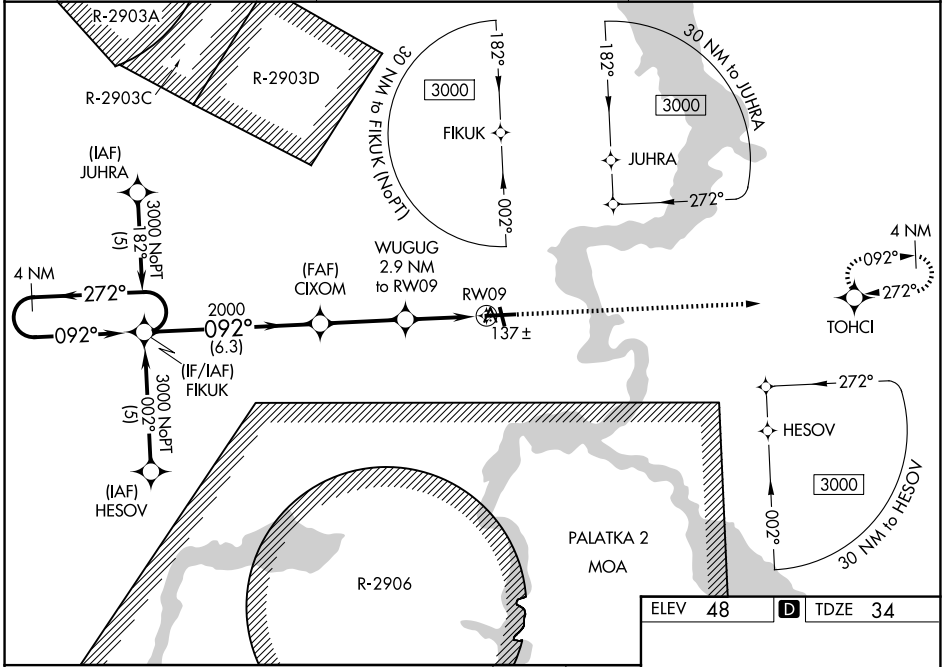
PALATKA MUNI/LT KAY LARKIN FLD (28J)

RNP APCH.

Baro-VNAV NA when using St Augustine altimeter setting. For uncompensated Baro-VNAV systems, LNAV/VNAV NA below -15°C (5°F) or above 49°C (120°F). Rwy 9 helicopter visibility reduction below ¾ SM NA. When local altimeter setting not received, use St Augustine altimeter setting and increase LPV DA all Cats to 379 feet, LNAV/VNAV DA all Cats to 457 feet, and all MDA 80 feet; increase LPV all Cats and LNAV Cats C/D visibility ¼ SM, and LNAV/VNAV all Cats and Circling Cat C/D visibility ¼ SM. Circling Rwy 17, 35 NA at night.

MISSED APPROACH: Climb to 3000 direct TOHCI and hold.

AWOS-3 119.925	JACKSONVILLE APP CON 118.175 338.25	UNICOM 122.8 (CTAF)
---------------------------------	--	--------------------------------------



ELEV 48	TDZE 34			
CATEGORY	A	B	C	D
LPV DA	314-1		280 (300-1)	
LNAV/VNAV DA	392-1¼		358 (400-1¼)	
LNAV MDA	480-1	446 (500-1)	480-1¾ 446 (500-1¾)	480-1½ 446 (500-1½)
CIRCLING	620-1	572 (600-1)	700-1¾ 652 (700-1¾)	700-2 652 (700-2)
REIL Rwy 9 and 27 1 MRL Rwy 9-27 and 17-35 1				

SE-3, 14 MAY 2026 to 11 JUN 2026

SE-3, 14 MAY 2026 to 11 JUN 2026