

HOPKINSVILLE, KENTUCKY

ILS or LOC Y RWY 23

LOC/DME I-FKP 111.9 Chan 56	APCH CRS 225°	Rwy Idg 10,930 TDZE 571 Arpt Elev 571
---	-------------------------	--

[USA]

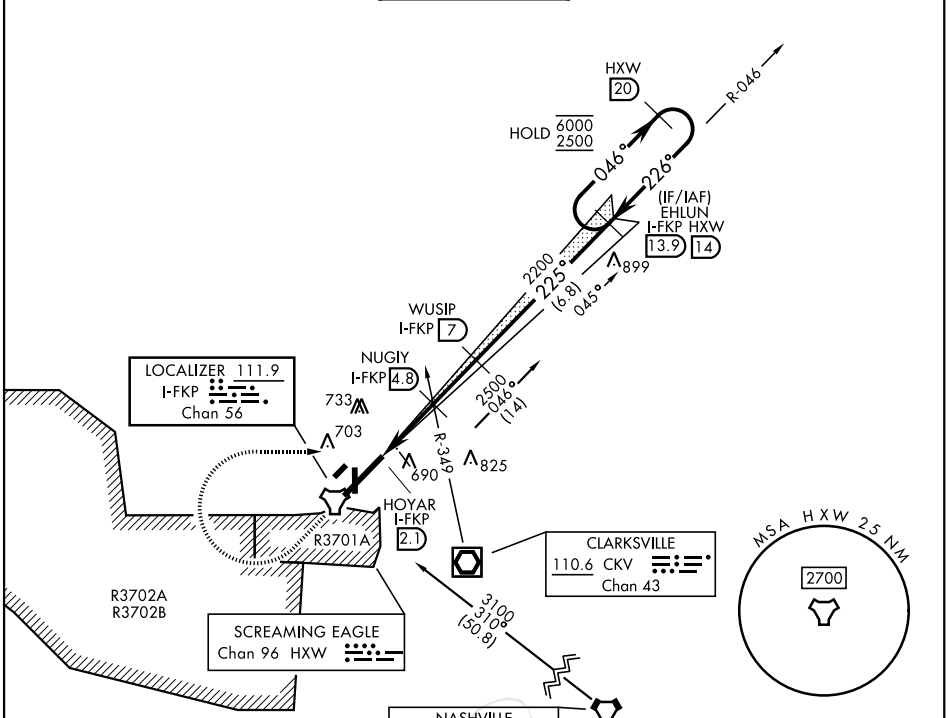
CAMPBELL AAF (FORT CAMPBELL) (KHOP)

*When ALS inop, increase RVR to 40, vis to ¾ mile.
**When ALS inop, increase CAT AB RVR to 55, vis to 1 mile; CAT CDE RVR to 60, vis to 1½ miles.
***Circling not authorized for CAT ABCD SE of Rwy 5-23.

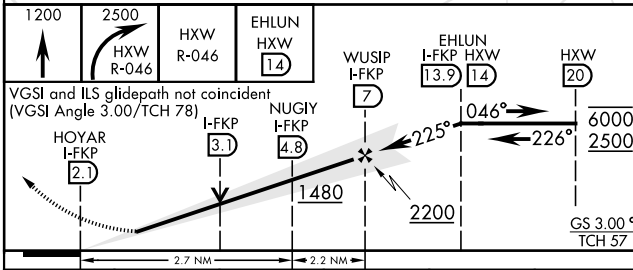


MISSED APPROACH: Climb to 1200 then climbing right turn to 2500 on heading 091° and HXW TACAN R-046 to EHLUN/14 DME and hold.

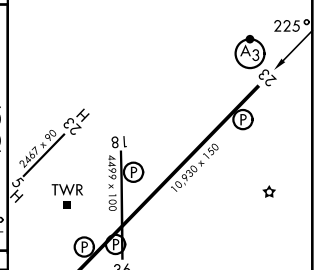
ATIS 125.175 308.4	APP CON 118.1 269.525	TOWER 120.9 278.8	GND CON 121.8 266.8	ASR/PAR
------------------------------	---------------------------------	-----------------------------	-------------------------------	---------



EMERG SAFE ALT 100 NM 3400



ELEV	571	TDZE	571
------	-----	------	-----



CATEGORY	A	B	C	D	E
S-ILS 23*	771/24		200	(200-½)	
S-LOC 23**	960/24	389 (400-½)	960/35	389	(400-¾)
CIRCLING***	1020-1 449 (500-1)	1040-1 469 (500-1)	1040-1½ 469 (500-1½)	1140-2	569 (600-2)

HIRL all rwsys

HOPKINSVILLE, KENTUCKY

36°40'N - 87°30'W

CAMPBELL AAF (FORT CAMPBELL) (KHOP)

Orig 14MAY26

ILS or LOC Y RWY 23

SE-1, 14 MAY 2026 to 11 JUN 2026

SE-1, 14 MAY 2026 to 11 JUN 2026