

RNAV (GPS) RWY 18

APCH CRS	Rwy Idg	4499
180°	TDZE	562
	Arpt Elev	571

[USA]

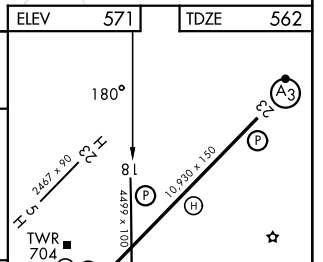
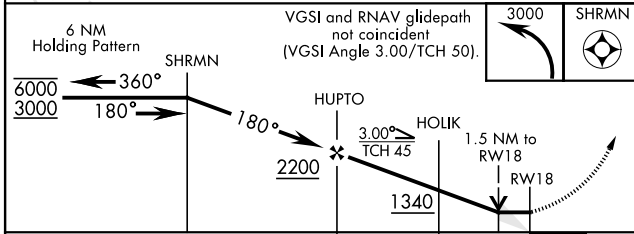
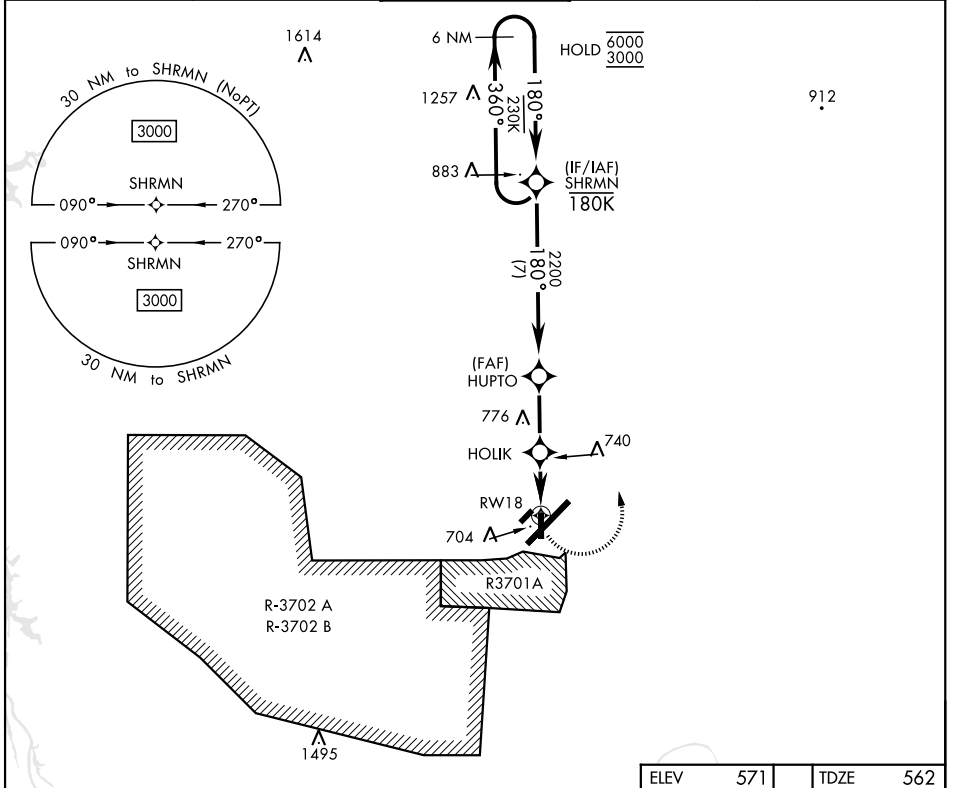
CAMPBELL AAF (FORT CAMPBELL) (KHOP)

RNP APCH-GPS

* Circling not authorized SE of Rwy 5-23.

MISSED APPROACH: Climbing left turn to 3000 direct SHRMN and hold.

ATIS 125.175 308.4	APP CON 118.1 269.525	TOWER 120.9 278.8	GND CON 121.8 266.8	ASR/PAR
------------------------------	---------------------------------	-----------------------------	-------------------------------	---------



CATEGORY	A	B	C	D
LNVA MDA	1080-1	518 (600-1)	1080-1 $\frac{3}{8}$ 518 (600-1 $\frac{3}{8}$)	NOT AUTHORIZED
CIRCLING*	1080-1	509 (600-1)	1080-1 $\frac{1}{2}$ 509 (600-1 $\frac{1}{2}$)	NOT AUTHORIZED

HIRL all rwys

RNAV (GPS) RWY 18

SE-1, 14 MAY 2026 to 11 JUN 2026

SE-1, 14 MAY 2026 to 11 JUN 2026