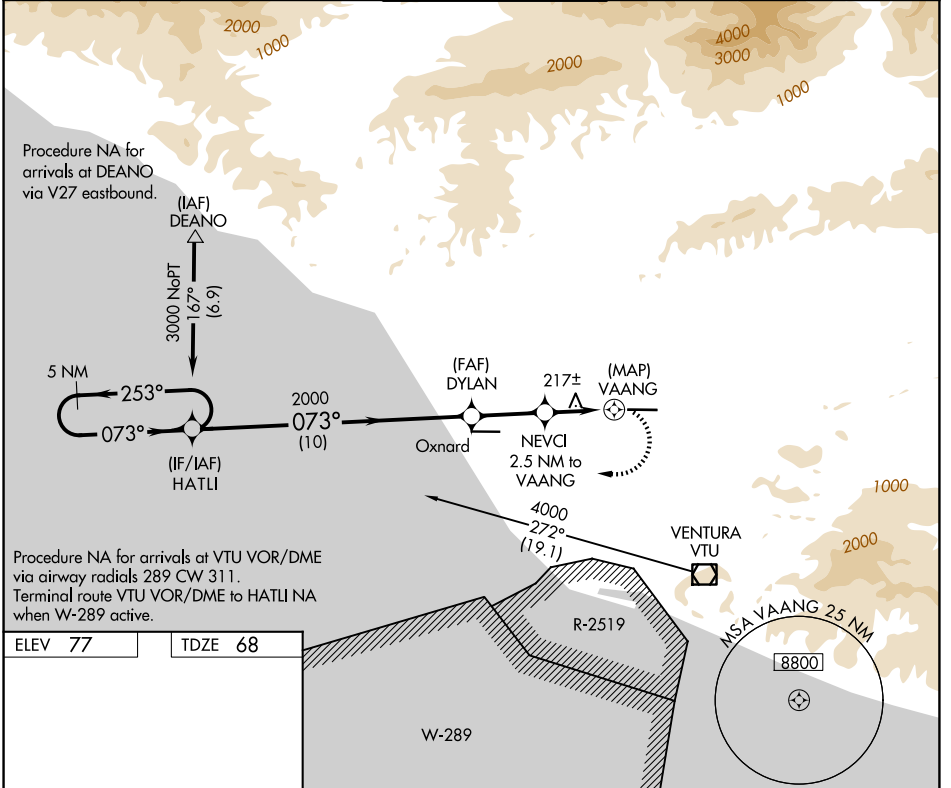


APP CRS 073°	Rwy Ldg TDZE Apt Elev	6013 68 77
------------------------	-----------------------------	---------------------------------------

RNAV (GPS) RWY 8

CAMARILLO (CMA)

<p>⚠ Circling NA north of Rwy 8-26. DME/DME RNP-0.3 NA. When local altimeter setting not received, use Oxnard altimeter setting and increase all MDA 20 feet.</p>		<p>MISSED APPROACH: Climbing right turn to 3000 direct HATLI and hold.</p>		
ATIS 126.025	POINT MUGU APP CON * 124.7 335.5	CAMARILLO TOWER * 128.2 (CTAF) 0 269.4	GND CON 121.8	UNICOM 122.95



ELEV 77 TDZE 68

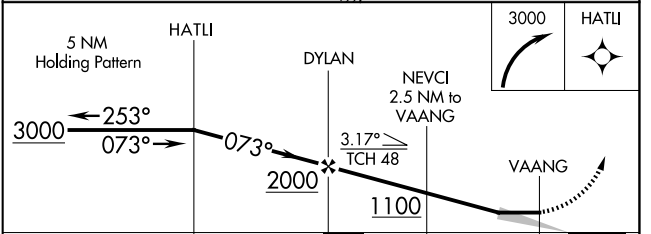
Procedure NA for arrivals at DEANO via V27 eastbound.

(IAF) DEANO
3000 NoPT
1.67° (6.9)

5 NM
253°
073°
(IF/IAF) HATLI

Procedure NA for arrivals at VTU VOR/DME via airway radials 289 CW 311. Terminal route VTU VOR/DME to HATLI NA when W-289 active.

REIL Rwy 8 and 26
MIRL Rwy 8-26



CATEGORY	A	B	C	D
LNAV MDA	840-1 772 (800-1)	840-1¼ 772 (800-1¼)	840-2½	772 (800-2½)
CIRCLING	840-1 763 (800-1)	840-1¼ 763 (800-1¼)	840-2½ 763 (800-2½)	1100-3 1023 (1100-3)

SW-3, 14 MAY 2026 to 11 JUN 2026

SW-3, 14 MAY 2026 to 11 JUN 2026