

WAAS CH 58207 W25A	APP CRS 252°	Rwy Ldg TDZE Apt Elev	4872 659 684
--	------------------------	-----------------------------	---

RNAV (GPS) RWY 25

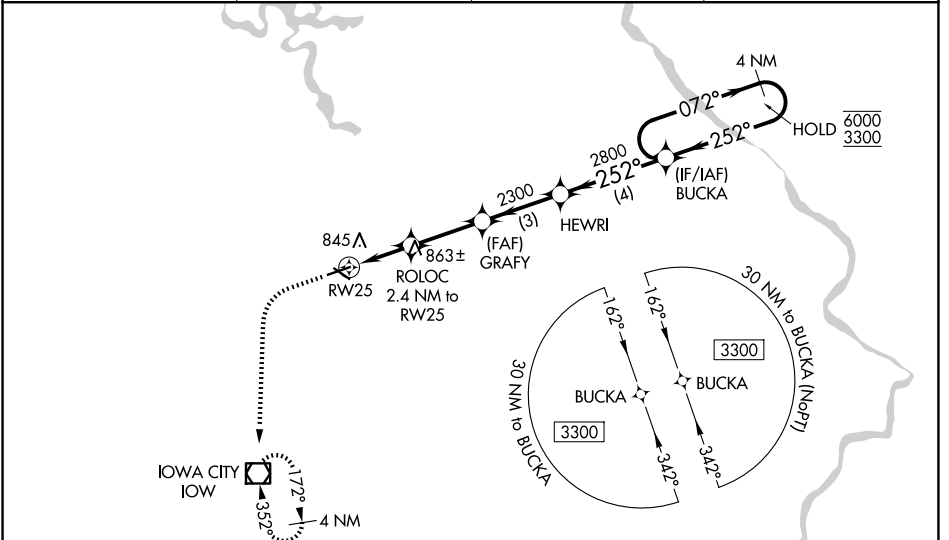
IOWA CITY MUNI (IOW)

RNP APCH - GPS.

⚠ Rwy 25 helicopter visibility reduction below 3/4 SM NA. For uncompensated Baro-VNAV systems, LNAV/VNAV NA below -22°C or above 54°C. Circling Rwy 12, 30 NA at night. Baro-VNAV and VDP NA when using CID altimeter setting. When local altimeter setting not received, use CID altimeter setting: increase LPV DA to 970 feet and all visibilities 1/2 SM; increase LNAV/VNAV DA to 1209 feet and all visibilities 1/2 SM; increase all MDAs 80 feet and LNAV visibility Cats C/D 3/4 SM, and Circling visibility Cat C/D 1/2 SM.

MISSED APPROACH: Climb to 1200 then climbing left turn to 2600 direct IOW VOR/DME and hold, continue climb-in-hold to 2600.

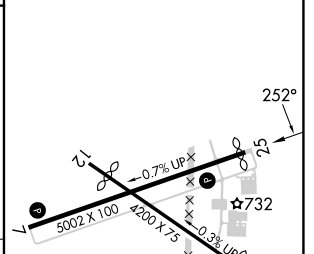
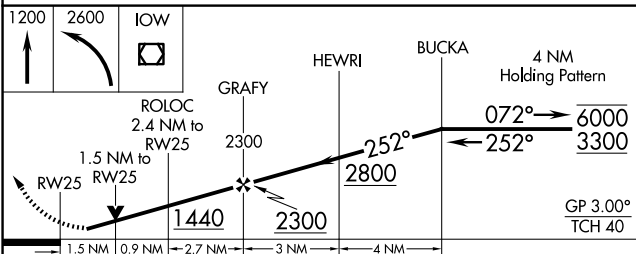
ASOS 128,075	CEDAR RAPIDS APP CON* 119.7 266.8	CLNC DEL 119.05	UNICOM 122.8 (CTAF) 1
------------------------	---	---------------------------	---------------------------------



NC-3, 14 MAY 2026 to 11 JUN 2026

NC-3, 14 MAY 2026 to 11 JUN 2026

ELEV 684	D TDZE 659
----------	-------------------



CATEGORY	A	B	C	D
LPV DA		909-3/4	250 (300-3/4)	
LNAV/VNAV DA		1150-13/8	491 (500-13/8)	
LNAV MDA	1160-1	501 (500-1)	1160-13/8	501 (500-13/8)
CIRCLING	1220-1 536 (600-1)	1240-1 556 (600-1)	1440-2 1/4 756 (800-2 1/4)	1440-2 1/2 756 (800-2 1/2)

REIL Rws 7 and 25 & 30 **1**
MIRL Rws 7-25 and 12-30 **1**