

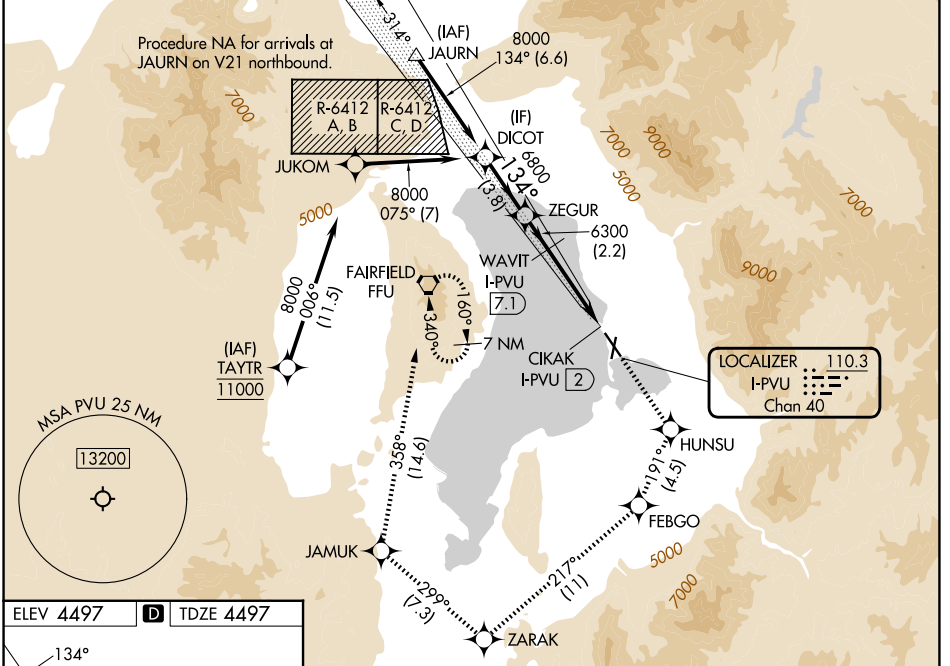
LOC/DME I-PVU 110.3 Chan 40	APP CRS 134°	Rwy Ldg 8599 TDZE 4497 Apt Elev 4497
---	------------------------	---

ILS or LOC RWY 13

PROVO MUNI (PVU)

RNP APCH - GPS.	MISSED APPROACH: Climb to 9000 direct HUNSU and on track 191° to FEBGO and on track 217° to ZARAK and on track 299° to JAMUK and on track 358° to FFU VORTAC and hold. *Missed approach requires minimum climb of 215 feet per NM to 7760.
<p>▼ Rwy 13 helicopter visibility reduction below 3/4 SM NA.</p> <p>▲ Circling Rwy 18, 36 NA at night. When local altimeter setting not received, procedure NA. Circling NA east of Rwy 18 and 31.</p>	

ATIS 135.175	SALT LAKE CITY APP CON 118.85 233.7	PROVO TOWER * 125.3 (CTAF)	GND CON 119.4
------------------------	---	--------------------------------------	-------------------------



ELEV 4497	D	TDZE 4497
-----------	----------	-----------

134°	81	8L	36	31
TWR	6628 X 150	8002 X 150		
REIL Rwy 13 HIRL Rwy 13-31 MIRL Rwy 18-36				

DICOT	9000 HUNSU	FEBGO	ZARAK	JAMUK	FFU
	tr 191°	tr 217°	tr 299°	tr 358°	
ZEGUR	WAVIT I-PVU [7.1]	I-PVU [2.9]	CIKAK I-PVU [2]		
8000	6800	6300	6300		
GP 3.00°	TCH 50				
3.8 NM	2.2 NM	4.2 NM	0.9 NM	0.5	
CATEGORY	A	B	C	D	
S-ILS 13*	4756-3/4 259 (300-3/4)				
S-ILS 13	4925-1 1/4 428 (500-1 1/4)				
S-LOC 13	4980-1	483 (500-1)	4980-1 3/8	483 (500-1 3/8)	
CIRCLING	4980-1	483 (500-1)	5160-1 3/4	5280-2 1/2	
			663 (700-1 3/4)	783 (800-2 1/2)	

SW-4, 14 MAY 2026 to 11 JUN 2026

SW-4, 14 MAY 2026 to 11 JUN 2026