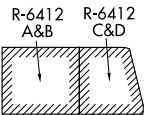


SALT LAKE CITY APP CON
118.85 233.7
ATIS
135.175

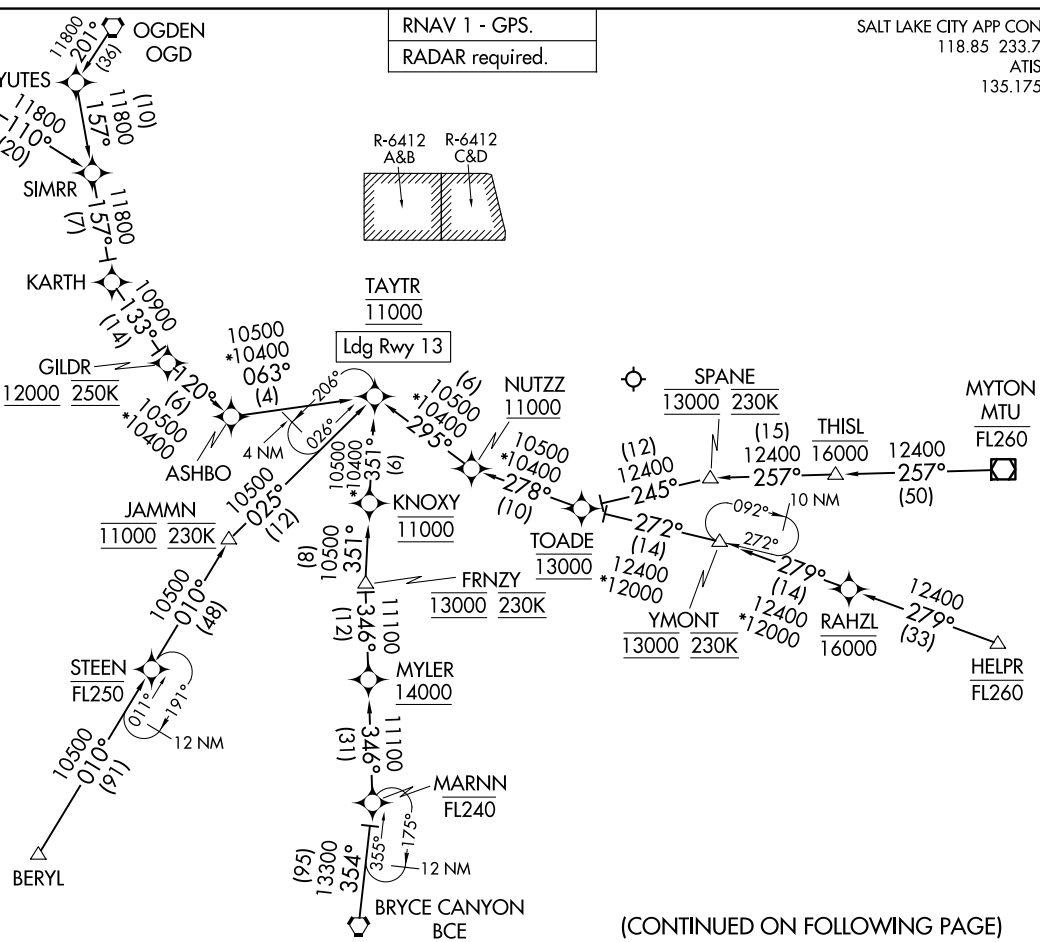
RNAV 1 - GPS.

RADAR required.



TAYTR
11000

Ldg Rwy 13



TAYTR FOUR ARRIVAL (RNAV)
(TAYTR, TAYTR4) 14MAY26

PROVO, UTAH
PROVO MUNI (PVTU)

TAYTR FOUR ARRIVAL (RNAV)
26134

AL-683 (FAA)

PROVO, UTAH
PROVO MUNI (PVTU)

NOTE: GPS required.

NOTE: Chart not to scale.

(CONTINUED ON FOLLOWING PAGE)

ARRIVAL ROUTE DESCRIPTION

BERYL TRANSITION (BERYL.TAYTR4)

BONNEVILLE TRANSITION (BVL.TAYTR4)

BRYCE CANYON TRANSITION (BCE.TAYTR4)

FRNZY TRANSITION (FRNZY.TAYTR4)

HELPR TRANSITION (HELPR.TAYTR4)

JAMMN TRANSITION (JAMMN.TAYTR4)

KNOLE TRANSITION (KNOLE.TAYTR4)

MARNN TRANSITION (MARNN.TAYTR4)

MYTON TRANSITION (MTU.TAYTR4)

OGDEN TRANSITION (OGD.TAYTR4)

RAHZL TRANSITION (RAHZL.TAYTR4)

SPANE TRANSITION (SPANE.TAYTR4)

STEEN TRANSITION (STEEN.TAYTR4)

THISL TRANSITION (THISL.TAYTR4)

YMONT TRANSITION (YMONT.TAYTR4)

From TAYTR, expect ILS or RNAV RWY 13 approach.

LOST COMMUNICATIONS

Proceed on assigned instrument approach.

SW-4, 14 MAY 2026 to 11 JUN 2026

SW-4, 14 MAY 2026 to 11 JUN 2026