


LOC/DME I-GLD <b>108.9</b> Chan 26	APP CRS <b>305°</b>	Rwy Ldg <b>5499</b> TDZE <b>3653</b> Apt Elev <b>3658</b>
--	------------------------	---

# ILS or LOC RWY 30

RENNER FLD/GOODLAND MUNI (GLD)

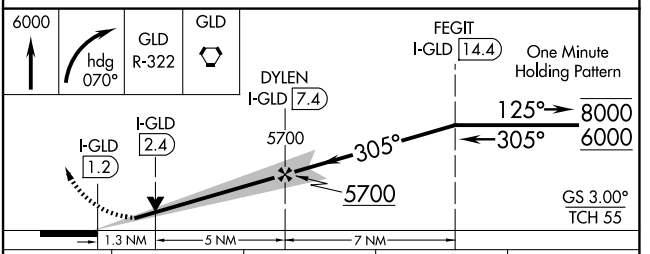
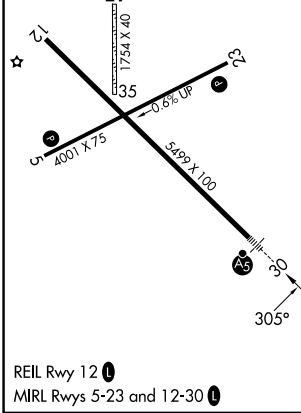
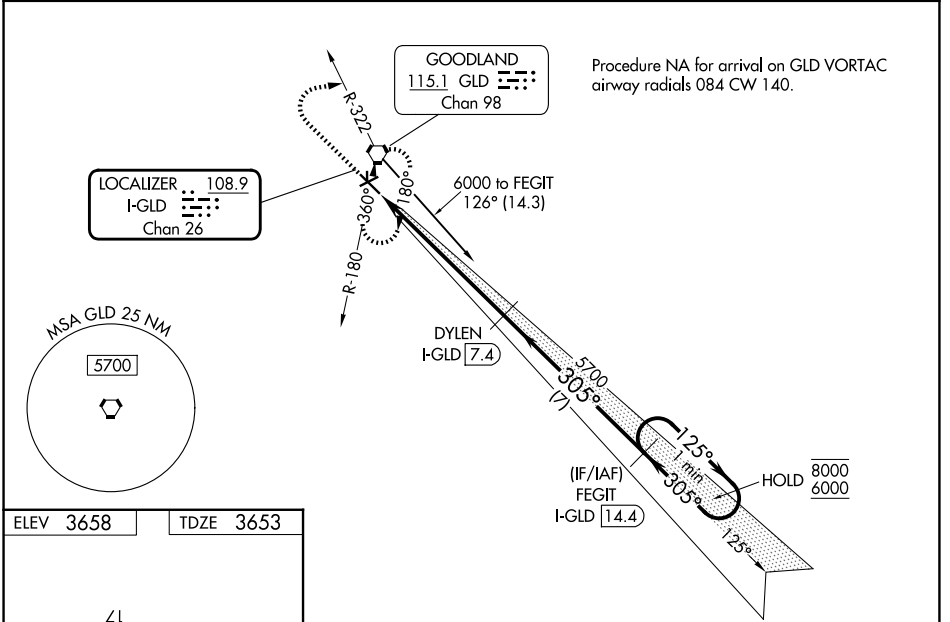
DME required.

**⚠** VDP NA when using ITR altimeter setting. Circling Rwy 5 NA at night. Circling NA south of Rwy 5 and 30. Circling NA to Rwy 17 and 35. Rwy 30 helicopter visibility reduction below 3/4 SM NA. When local altimeter setting not received, use ITR altimeter setting: increase S-ILS 30 to DA 4043 feet; increase all MDAs 140 feet and S-LOC 30 Cat C and D visibility 3/8 SM, and Circling Cat C and D visibility 1/4 SM. For inop ALS, increase S-LOC 30 Cat C and D visibility to 1/2 SM. For inop ALS when using ITR altimeter setting, increase S-ILS 30 all Cats visibility to 1/2 SM, and S-LOC 30 Cat C and D visibility to 1/2 SM. Inop table does not apply to S-ILS 30 all Cats and S-LOC 30 Cats A and B.

**MALS**  


**MISSED APPROACH:** Climb to 6000 then right turn on heading 070° and GLD VORTAC R-322 to GLD VORTAC and hold.

ASOS <b>121.025</b>	DENVER CENTER <b>132.7 226.675</b>	UNICOM <b>122.8 (CTAF) 1</b>
------------------------	---------------------------------------	---------------------------------



CATEGORY	A	B	C	D
S-ILS 30	3903-1 250 (300-1)			
S-LOC 30	4120-1 467 (500-1)			
CIRCLING	4120-1	462 (500-1)	4120-1 1/2 462 (500-1 1/2)	4240-2 582 (600-2)

NC-2, 14 MAY 2026 to 11 JUN 2026

NC-2, 14 MAY 2026 to 11 JUN 2026