

VORTAC GLD <b>115.1</b> Chan <b>98</b>	APP CRS <b>332°</b>	Rwy Ldg <b>5499</b> TDZE <b>3654</b> Apt Elev <b>3657</b>
--	------------------------	---

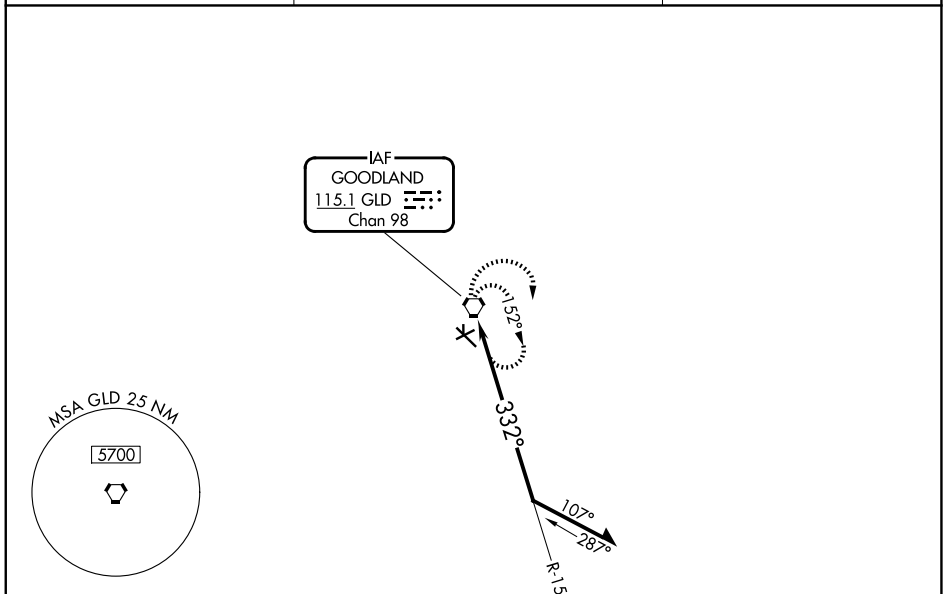
**VOR RWY 30**  
RENNER FLD/GOODLAND MUNI (GLD)

▼ Inoperative table does not apply to S-30 Cat C/D. Circling NA south of Rwy 5 and 30.  
▲ When local altimeter setting not received, use Burlington, CO altimeter setting and increase all MDA 160 feet; increase S-30 Cat C/D visibilities to 2 miles, Circling Cat C visibility to 2 miles and Circling Cat D visibility to 2 ¼ miles. Circling Rwy 5, 23 NA at night. Circling NA to Rwys 17 and 35.

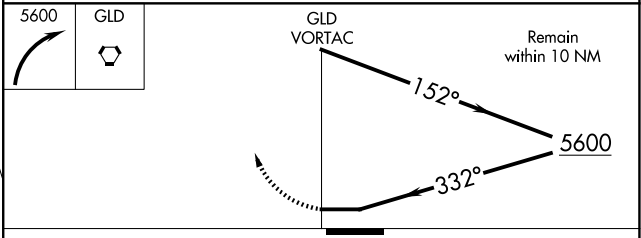
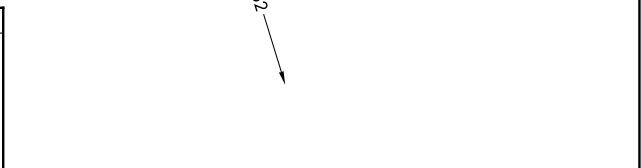
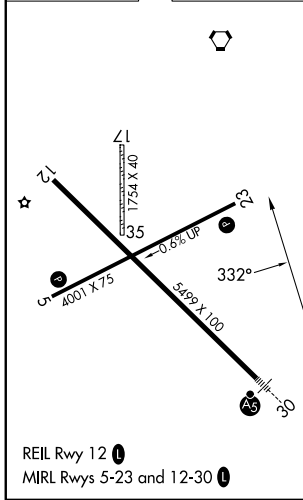


MISSED APPROACH: Climbing right turn to 5600 in GLD VORTAC holding pattern.

ASOS <b>121.025</b>	DENVER CENTER <b>132.7 226.675</b>	UNICOM <b>122.8</b> (CTAF) <b>0</b>
------------------------	---------------------------------------	--



ELEV 3657	TDZE 3654
-----------	-----------



CATEGORY	A	B	C	D
S-30	4200-1/2	546 (600-1/2)	4200-1 5/8	546 (600-1 5/8)
CIRCLING	4200-1	543 (600-1)	4200-1 5/8 543 (600-1 5/8)	4240-2 583 (600-2)

NC-2, 14 MAY 2026 to 11 JUN 2026

NC-2, 14 MAY 2026 to 11 JUN 2026