

WAAS CH <b>97505</b> <b>W04A</b>	APP CRS <b>041°</b>	Rwy Ldg TDZE Apt Elev	<b>5750</b> <b>1496</b> <b>1500</b>
--	------------------------	-----------------------------	---

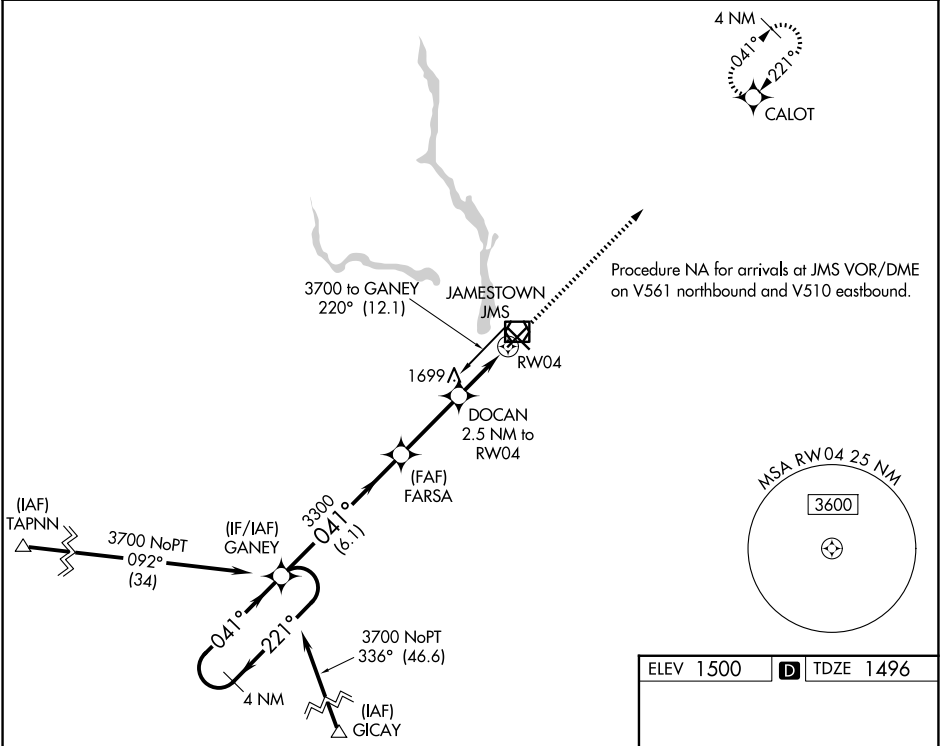
# RNAV (GPS) RWY 4

JAMESTOWN RGNL (JMS)

**⚠** For uncompensated Baro-VNAV systems, LNAV/VNAV NA below -21°C (-5°F) or above 54°C (130°F). DME/DME RNP-0.3 NA.

MISSED APPROACH: Climb to 3300 direct CALOT and hold.

ASOS <b>118.425</b>	MINNEAPOLIS CENTER <b>124.2 270.3</b>	UNICOM <b>123.0 (CTAF) 0</b>
------------------------	--	---------------------------------



ELEV 1500 TDZE 1496

4 NM Holding Pattern

VGSI and RNAV glidepath not coincident (VGSI Angle 3.00/TCH 22).

3300 CALOT

3700

GP 3.00° TCH 45

GANEY

FARSA

DOCAN 2.5 NM to RW04

\*1.5 NM to RW04

RW04

\*LNNAV only

\*2340

6.1 NM

2.9 NM

1 NM

1.5 NM

5750 X 75

6502 X 100

041°

MIRL Rwy 4-22 0

HIRL Rwy 13-31 0

REIL Rwy 4, 13, and 22 0

CATEGORY	A	B	C	D
LPV DA	1746-1		250 (300-1)	
LNAV/VNAV DA	1930-1½		434 (500-1½)	
LNAV MDA	2000-1 504 (500-1)		2000-1½ 504 (500-1½)	
CIRCLING	2000-1 500 (500-1)		2000-1½ 2300-2½ 500 (500-1½) 800 (800-2½)	

NC-1, 14 MAY 2026 to 11 JUN 2026

NC-1, 14 MAY 2026 to 11 JUN 2026