

WAAS CH <b>90233</b> <b>W13A</b>	APP CRS <b>134°</b>	Rwy Ldg TDZE Apt Elev	<b>6200</b> <b>5046</b> <b>5096</b>
--	------------------------	-----------------------------	---

# RNAV (GPS) RWY 13

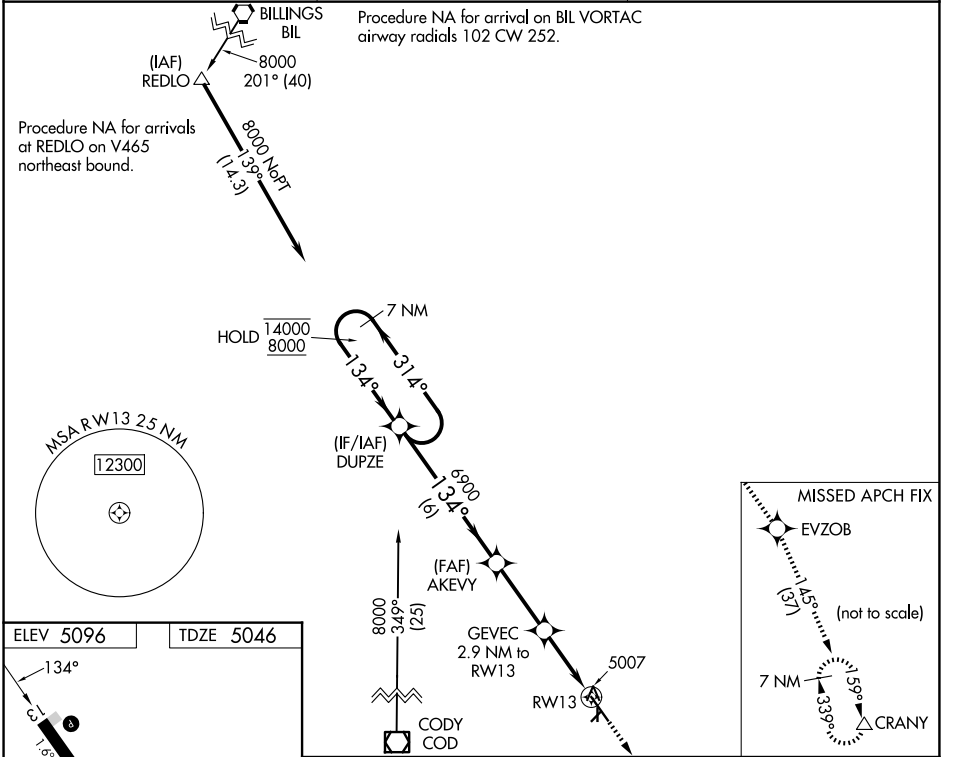
POWELL MUNI (POY)

RNP APCH.

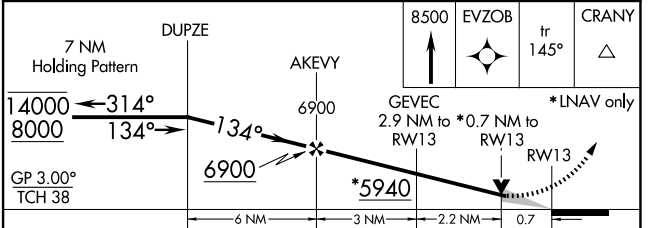
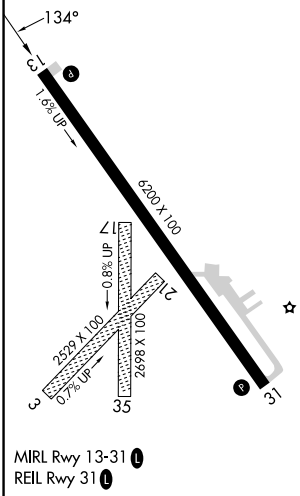
**NA** Circling NA to Rwys 3, 17, 21 and 35. For uncompensated Baro-VNAV systems, LNAV/VNAV NA below -25°C or above 51°C. Baro-VNAV and VDP NA when using Cody altimeter setting. When local altimeter setting not received, use Cody altimeter setting and increase all DA 54 feet and all MDA 60 feet.

MISSED APPROACH: Climb to 8500 direct EVZOB and on track 145° to CRANY and hold.

AWOS-3 <b>119.275</b>	SALT LAKE CENTER <b>127.75 351.9</b>	UNICOM <b>122.7 (CTAF) 0</b>
--------------------------	---	---------------------------------



ELEV 5096	TDZE 5046
-----------	-----------



CATEGORY	A	B	C	D
LPV DA		5296-1	250 (200-1)	
LNAV/VNAV DA		5296-1	250 (200-1)	
LNAV MDA		5300-1	254 (300-1)	
CIRCLING	5500-1 404 (500-1)	5560-1 464 (500-1)	5560-1½ 464 (500-1½)	5660-2 564 (600-2)

NW-1, 14 MAY 2026 to 11 JUN 2026

NW-1, 14 MAY 2026 to 11 JUN 2026