

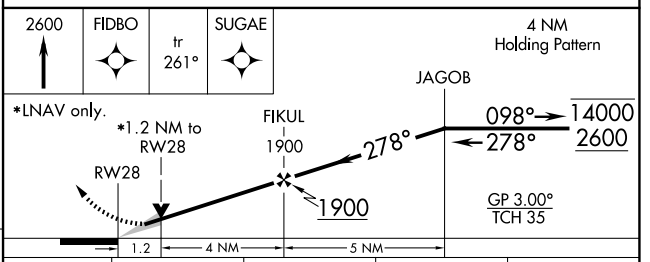
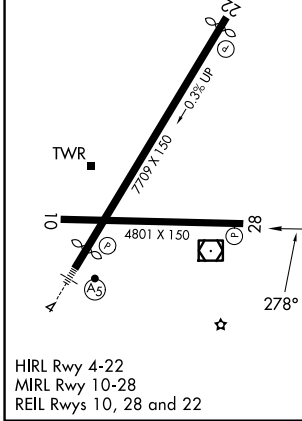
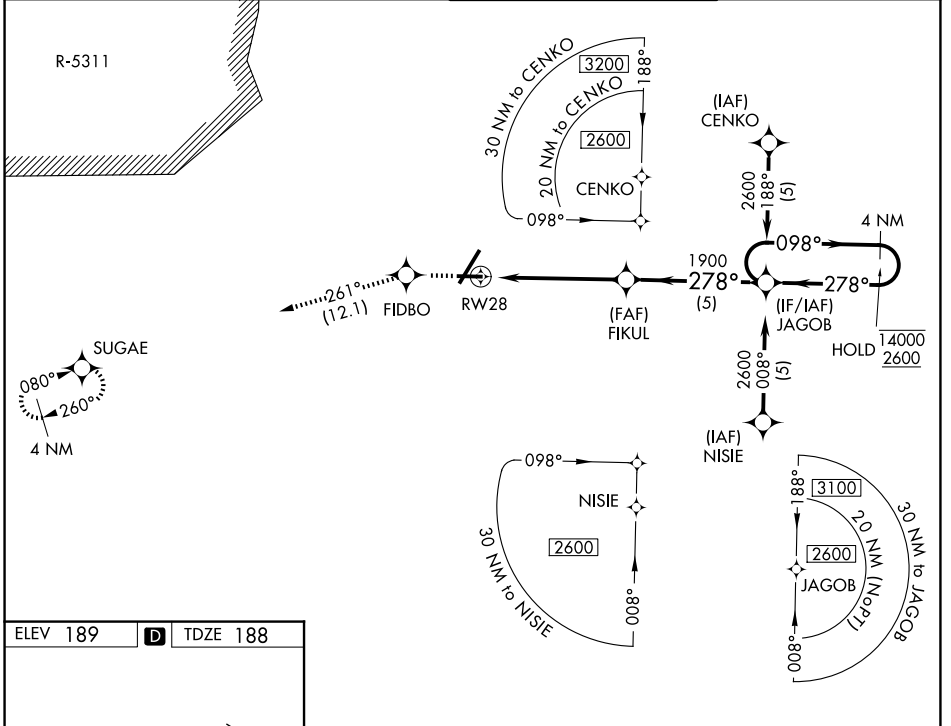
APP CRS	Rwy Ldg	4801
278°	TDZE	188
	Apt Elev	189

RNAV (GPS) RWY 28

FAYETTEVILLE RGNL/GRANNIS FLD (FAY)

RNP APCH.	MISSED APPROACH: Climb to 2600 direct FIDBO and on 261° track to SUGAE and hold.
⚠	For uncompensated Baro-VNAV systems, LNAV/VNAV NA below -10° C or above 54°C.

ATIS 121.25	FAYETTEVILLE APP CON 133.0 290.25	FAYETTEVILLE TOWER 118.3 269.2	GND CON 121.7 348.6
-----------------------	---	--	-------------------------------



CATEGORY	A	B	C	D
LNAV/VNAV DA	500-1¼ 312 (400-1¼)			
LNAV MDA	600-1	412 (500-1)	600-1¼	412 (500-1¼)
CIRCLING	640-1¼ 451 (500-1¼)	660-1¼ 471 (500-1¼)	860-2 671 (700-2)	860-2¼ 671 (700-2¼)

SE-2, 14 MAY 2026 to 11 JUN 2026

SE-2, 14 MAY 2026 to 11 JUN 2026